

CERTIFIED LAND CORNER RESTORATION

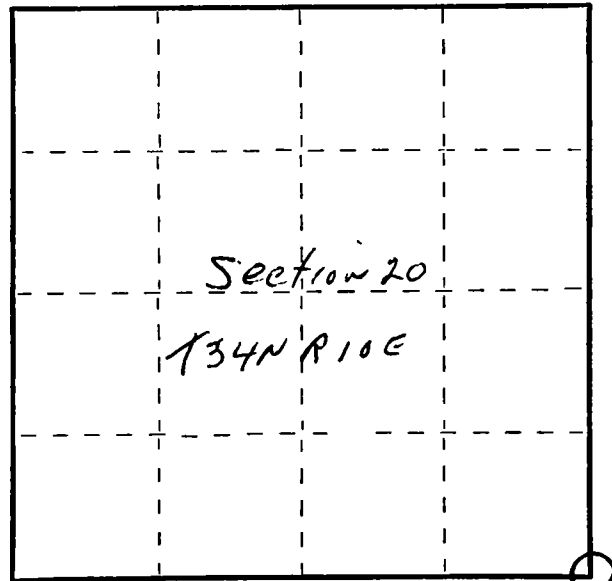
Index No. R-9

State of Wisconsin }
County of Langlade } ss.

I Raymond J. Hollisy, do hereby
certify that on the 5th day
of April, 19 80, I found
evidence of the Section
corner of 20, 21, 28, & 29
Township 34, North, Range
10E, Fourth Principal Meridian,
as described hereon; and that from this evidence
I established a new monument and accessories
as described hereon to perpetuate the original
location of this corner.

Resident witnesses:

.....
.....
.....



○ = Corner monument restored.

History of original corner establishment:

Corner set in the 1930 resurvey.

Description of corner evidence found:

4" iron pipe with brass cap, rock mound.

Description of monument and accessories I established to perpetuate the original location of this corner.

New BT's

6"	Hard Maple	N58E	9' 10"
8"	Basswood	S64E	35'
4"	Aspen	S40W	17' 11"

T34N R10E
20/21
29/28
LANG. Co
10-7-37

Dated at Antigo, Wis., this 5th day of April, 19 80.

Signature Raymond J. Hollisy Title Land Surveyor Registration No. S-685
(County Surveyor, Registered Land Surveyor, or other duly authorized official)

Office of Register of Deeds, County of....., I hereby certify that the within
instrument was filed in this office for record on the..... day of....., 19.....
at..... o'clock..... M.

.....
(Register of Deeds)

By..... Deputy