

# LANGLADE COUNTY U.S. PUBLIC LAND CORNER RESTORATION

The South Quarter corner of Section 19, T. 34 N., R. 10 E., Langlade County, WI.

Corner was: (check all that apply) 4341019 0020

- Restored through acceptance of an obliterated evidence location.
- Restored through acceptance of a found perpetuated location.
- Determined to be lost and re-established through proportionate methods.
- Show bearings and distances to PLSS corners used for proportioning, and show original distances).
- Restored/recovered/re-established in a location that differs from a previously established position.
- (Show difference in plan view below).
- Check here if additional information is shown on the reverse side of this form.

**Describe record evidence, recovered physical evidence, occupational evidence, testimonial evidence and all other evidence considered in the recovery/restoration of the corner.**

The original corner was established in 1865 by James Nowlin. Original bearing trees:sugar, 8", S75W, 12 links and a birch, 10", N78E, 20 links.

From the 1930's resurvey.: "set cor. on proportion. No BT's"

In 1979, Ray Hallisy found a 4" iron pipe with brass cap. Rock mound. He marked 4 BT's: red maple, 9", N80E, 26'8"; a red maple, 9", S40E, 13'6" and a white birch, 11", N73W, 18'1". On June 10, 2015, I found the 4" iron pipe with brass cap, frost heaved a bit and leaning, I dug out and reset the existing monument plumb. I found 1 remaining Hallisy BT as noted below.

**Physical description of the monument set:**

For the corner, I dug out the existing monument and reset it plumb.  
Set white vinyl sign post, N80W, 1.2 ft.

**Describe the accessories used to perpetuate the corner. Include a plan view drawing and accessories found/set. Describe measuring point on bearing trees. Show any topographic features that would aid in future recovery of the corner.**




Field book 25-22



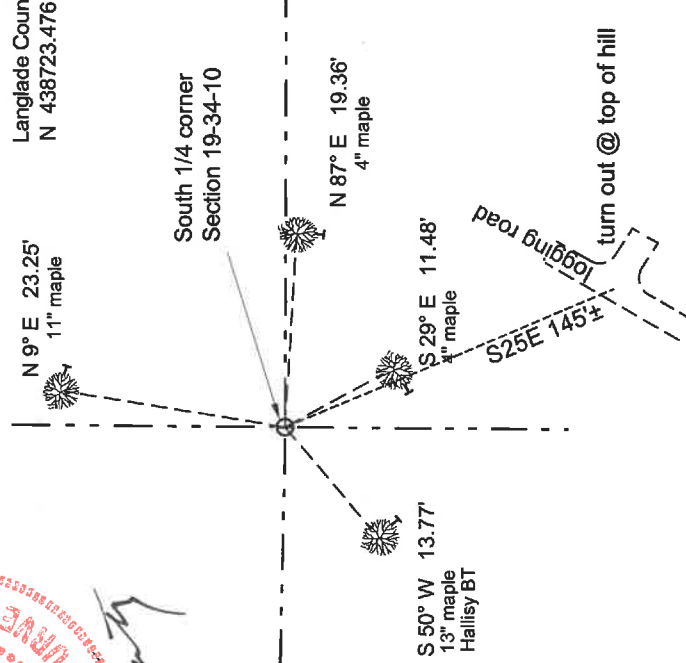
**LEGEND**

① 4" iron pipe w brass cap found

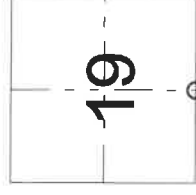
Bearing tree distances are measured to an aluminum nail in a low side blaze on the side of the tree shown:   
Trees have bearing tree signs facing the corner and are painted blue.

Bearings basis: magnetic, hand compass

Langlade County coordinates NAD83(2011)  
N 438723.476 E 585031.917



Index No.           R 3 34-10          



O = corner perpetuated  
The South Quarter corner of Section 19, T. 34 N., R. 10 E., Langlade County, WI

I, David E. Tlusty, Registered Land Surveyor, as Langlade County Surveyor, certify that the corner location on this record was determined by me and that this U.S. Public Land Survey Monument Record is correct to the best of my knowledge and belief.

CERTIFIED LAND CORNER RESTORATION

Index No. R-3

3-1-3

State of Wisconsin }  
County of Langlade } ss.

History of original corner establishment:  
1937 Resurvey

I Raymond J. Hallisy, do hereby certify that, on the 21st day of April, 1979, I found evidence of the South 1/4 corner of Section 19 Township 34, North, Range 10 EAST, Fourth Principal Meridian, as described hereon; and that from this evidence I established a new monument and accessories as described hereon to perpetuate the original location of this corner.

Description of corner evidence found:

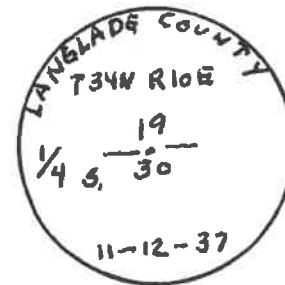
4 inch IRON Pipe With Brass CAP  
Rock Mound

Resident witnesses:

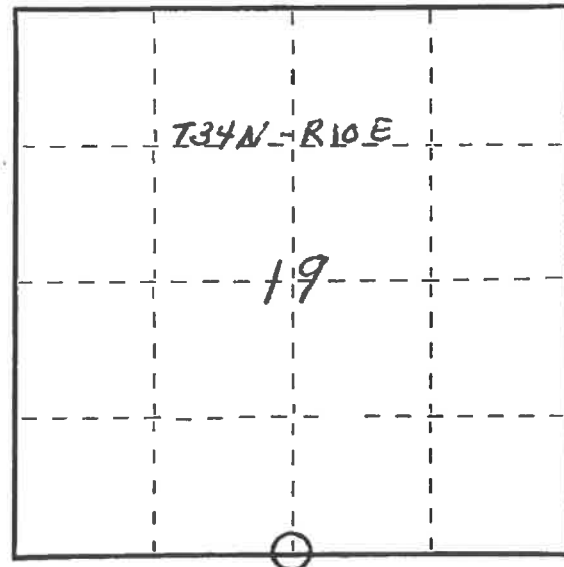
.....  
.....  
.....

Description of monument and accessories I established to perpetuate the original location of this corner.

NEW B.T.'S  
Red Maple 9" N80E 26' 8"  
" " 9" S40E 13' 6"  
White Birch 11" N73W 18' 1"



FORM 985 M. C. MILLER CO., MILWAUKEE



○ = Corner monument restored.

Dated at Antigo, Wis., this 21st day of Apr. 1, 1979.

Signature Raymond J. Hallisy Title Reg. Land Surveyor Registration No. 5685  
(County Surveyor, Registered Land Surveyor, or other duly authorized official)

Office of Register of Deeds, County of \_\_\_\_\_, I hereby certify that the within instrument was filed in this office for record on the \_\_\_\_\_ day of \_\_\_\_\_, 19\_\_\_\_ at \_\_\_\_\_ o'clock \_\_\_\_\_ M.

.....  
(Register of Deeds)  
By.....Deputy