

CERTIFIED LAND CORNER RESTORATION

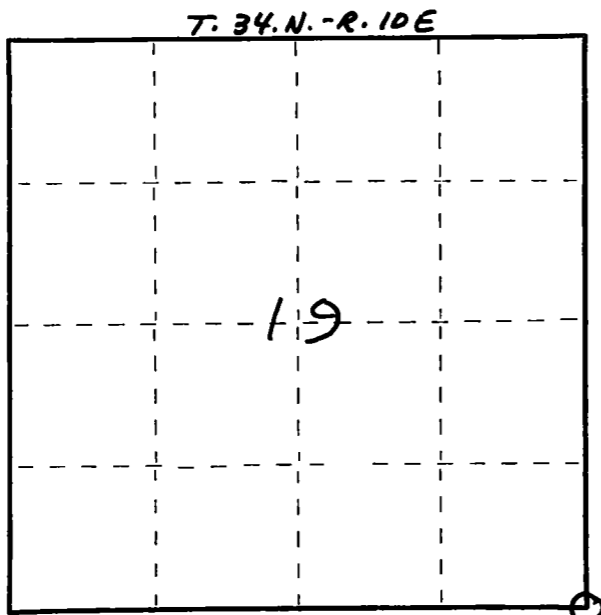
Index No. R-5

State of Wisconsin }  
County of LANGLADE } ss.

I WILLIAM F. KELLY, do hereby certify that on the 11<sup>TH</sup> day of DECEMBER, 1975, I found evidence of the SECTION corner of SECTIONS 19, 20, 30, & 29 Township 34, North, Range 10 E, Fourth Principal Meridian, as described hereon; and that from this evidence I established a new monument and accessories as described hereon to perpetuate the original location of this corner.

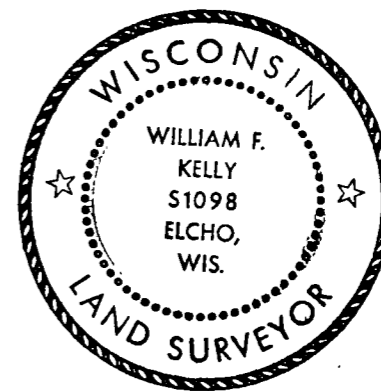
Resident witnesses:

FORM 985 H. C. MILLER CO., MILWAUKEE



○ = Corner monument restored.

History of original corner establishment:



*William F. Kelly*

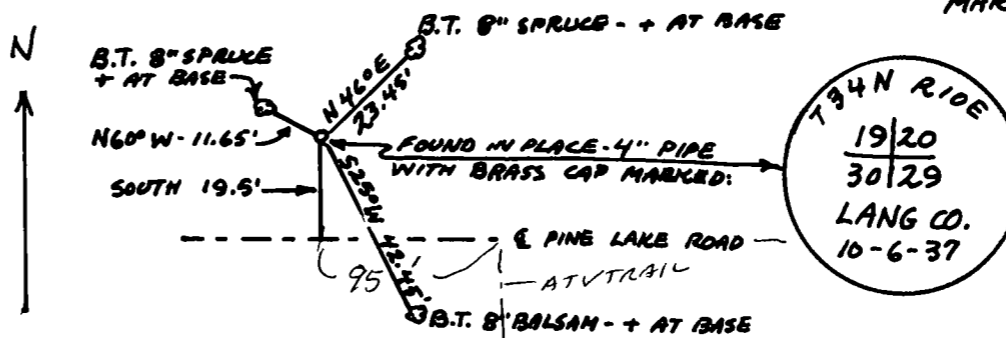
Description of corner evidence found:

LOCATED SECTION CORNER 19/20 30/29 T. 34 N. - R. 10 E. - 4" PIPE WITH BRASS CAP.

*8/15/13 D. TUSTY FOUND MON FROST AFFECTED. RESET STRAIGHT SO TOP IS 4" ABOVE GROUND. WHITE VINYL POST 1.0' SOUTH. COORDS FB 16-106*

Description of monument and accessories I established to perpetuate the original location of this corner.

**MARKED BEARING TREES AS WITNESS TO CORNER.**



Dated at ELCHO, Wis., this 11<sup>TH</sup> day of DECEMBER, 1975.

Signature William F. Kelly Title REGISTERED LAND SURVEYOR Registration No. 51098  
(County Surveyor, Registered Land Surveyor, or other duly authorized official)

Office of Register of Deeds, County of \_\_\_\_\_, I hereby certify that the within instrument was filed in this office for record on the \_\_\_\_\_ day of \_\_\_\_\_, 19\_\_\_\_ at \_\_\_\_\_ o'clock \_\_\_\_\_ M.

(Register of Deeds)

By \_\_\_\_\_ Deputy