

LANGLADE COUNTY U.S. PUBLIC LAND CORNER RESTORATION

The South Quarter corner of Section 18, T. 34 N., R. 10 E., Langlade County, WI.

Corner was: (check all that apply)

4341018 0020

- Restored through acceptance of an obliterated evidence location.
- Restored through acceptance of a found perpetuated location.
- Determined to be lost and re-established through proportionate methods.
- Show bearings and distances to PLSS corners used for proportioning, and show original distances).
- Restored/recovered/re-established in a location that differs from a previously established position.
- (Show difference in plan view below).
- Check here if additional information is shown on the reverse side of this form.

Describe record evidence, recovered physical evidence, occupational evidence, testimonial evidence and all other evidence considered in the recovery/restoration of the corner.

The original corner was established in 1865 by James Nowlin. Original bearing trees: hemlock, 6", S30W, 18 links and a birch, 9", N24W, 10 links.

From the 1930's resurvey: "to orig. 1/4 cor. orig. birch there, N24W 10 but rotten, orig. hemlock good, S30W, 18 links. In 1979, Ray Hallisy found orig. BT hemlock (dead) S30W, 18 links and he marked 3 new maple bearing trees: 10", N48W, 13.8 links; 6", N04W, 13.8 links and a 5", S22E, 28.6 links.

On June 18, 2015 I found the 4" iron pipe with brass cap from the 1930's resurvey work, upright, in excellent condition, top is 3" above ground. Accepted as the best evidence of a perpetuation of the original corner location and referenced it as shown below.

Physical description of the monument set:

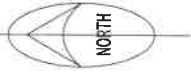
For the corner, I left the existing monument in place, as found.
Set sign post, North, 1.3 ft.

Describe the accessories used to perpetuate the corner. Include a plan view drawing and accessories found/set. Describe measuring point on bearing trees. Show any topographic features that would aid in future recovery of the corner.



David E. Tlusty
11/8/2020

Field book 25-24



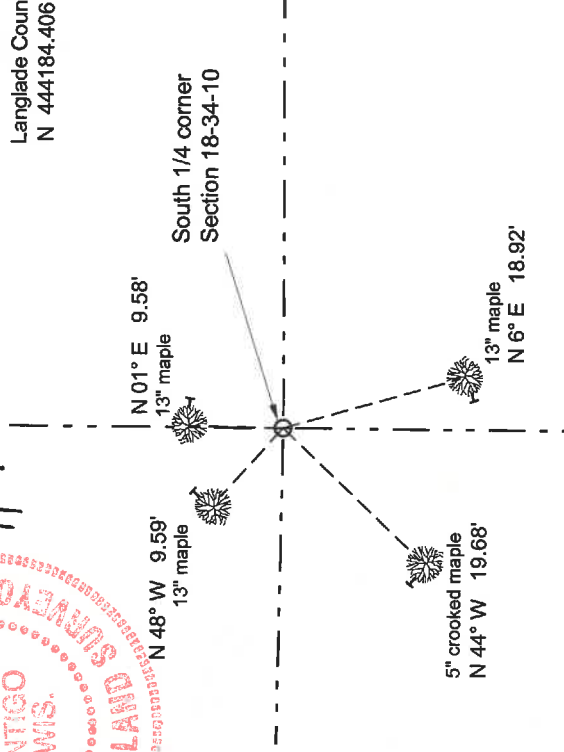
LEGEND

- ⓪ 4" iron pipe w brass cap found top up 3", solid in ground

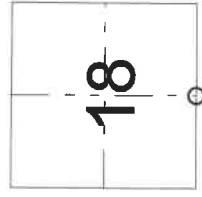
Bearing tree distances are measured to an aluminum nail in a low side blaze on the side of the tree shown: Trees have bearing tree signs facing the corner and are painted blue.

Bearings basis: magnetic, hand compass

Langlade County coordinates NAD83(2011)
N 444184.406 E 585495.982



Index No. N 3 34-10



⓪ = corner perpetuated

The South Quarter corner of Section 18, T. 34 N., R. 10 E., Langlade County, WI

I, David E. Tlusty, Registered Land Surveyor, as Langlade County Surveyor, certify that the corner location on this record was determined by me and that this U.S. Public Land Survey Monument Record is correct to the best of my knowledge and belief.

CERTIFIED LAND CORNER RESTORATION

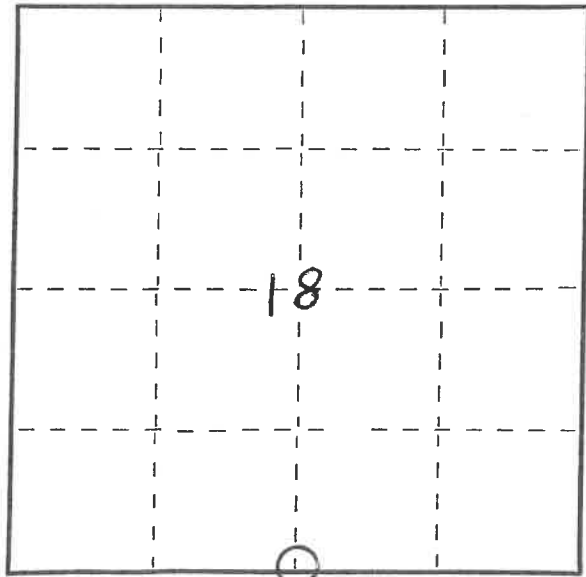
Index No. N-3

State of Wisconsin }
County of Langlade } ss.

I Raymond J. Hallisy, do hereby certify that on the 21st day of April, 19 79, I found evidence of the South 1/4 corner of Section 18 Township 34, North, Range 10 EAST, Fourth Principal Meridian, as described hereon; and that from this evidence I established a new monument and accessories as described hereon to perpetuate the original location of this corner.

Resident witnesses:

.....
.....
.....



○ = Corner monument restored.

History of original corner establishment:

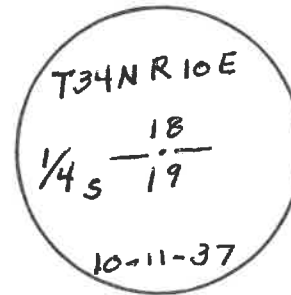
1937 RESURVEY

Description of corner evidence found:

4 inch BRASS CAPPED PIPE
Rock mound
OLD B.T. Hemlock (DEAD) 528W 18 LKS.

Description of monument and accessories I established to perpetuate the original location of this corner.

NEW B.T.S
Red Maple 10" N48W 13.8 LKS
" " 6" N4W 13.8 LKS
" " 5" S22E 28.6 LKS



Dated at ANTIGO, Wis., this 21st day of APRIL, 19 79.

Signature Raymond J. Hallisy Title Reg. Surveyor Registration No. 5685
(County Surveyor, Registered Land Surveyor, or other duly authorized official)

Office of Register of Deeds, County of _____, I hereby certify that the within instrument was filed in this office for record on the _____ day of _____, 19 _____ at _____ o'clock _____ M.

.....
(Register of Deeds)

By..... Deputy

FORM 985 H. C. MILLER CO., MILWAUKEE