

CERTIFIED LAND CORNER RESTORATION

Index No. L-13
341.00

State of Wisconsin }
County of Langlade } ss.

I Raymond J. Hallisy, do hereby certify that on the 6th day of May, 1978, I found evidence of the ~~XXX~~ 1/4 corner of Section 15 & 16 Township 34 North, Range 10E, Fourth Principal Meridian, as described hereon; and that from this evidence I established a new monument and accessories as described hereon to perpetuate the original location of this corner.

Resident witnesses:

.....
.....
.....

History of original corner establishment:

Corner set in the 1930 resurvey.

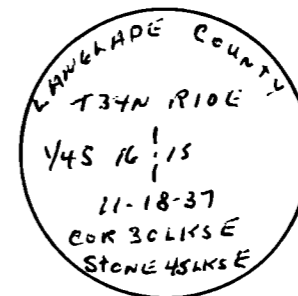
Description of corner evidence found:

Found 1" iron pipe with brass cap, WC

Description of monument and accessories I established to perpetuate the original location of this corner.

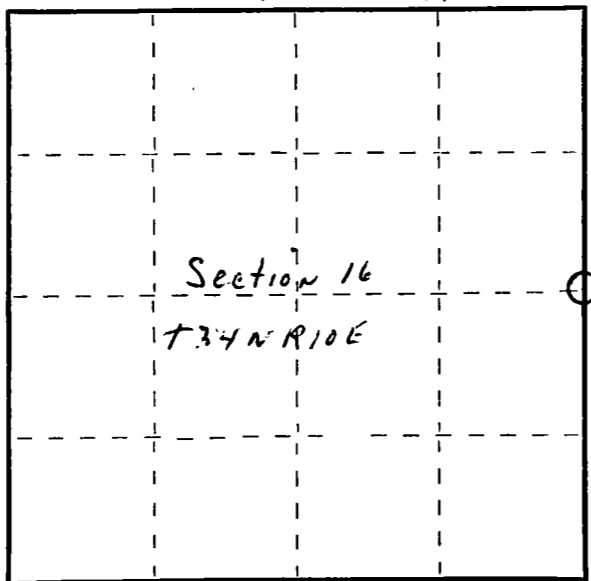
New BT's to witness corner

12" Yellow Birch N68W 9' 7"
4" Red Maple S75W 13' 2"
4" Hard Maple N43W 33' 6"



FORM 985 H. C. MILLER CO., MILWAUKEE

T 34 N R 10 E



○ = Corner monument restored.

Dated at Antigo, Wis., this 6th day of May, 1978

Signature Raymond J. Hallisy Title Reg. Land Surveyor Registration No. S685
(County Surveyor, Registered Land Surveyor, or other duly authorized official)

Office of Register of Deeds, County of....., I hereby certify that the within instrument was filed in this office for record on the.....day of....., 19..... at.....o'clock..... M.

.....
(Register of Deeds)

By.....Deputy