

CERTIFIED LAND CORNER RESTORATION

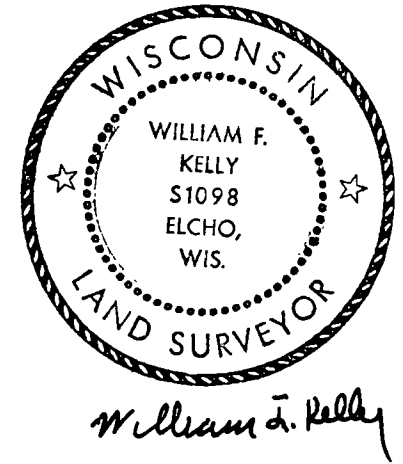
Index No. N-13

State of Wisconsin }
 County of LANGLADE } ss.

I WILLIAM F. KELLY, do hereby certify that on the 11TH day of DECEMBER, 1975, I found evidence of the SECTION corner of SECTIONS 16, 15, 21, & 22 Township 34, North, Range 10E, Fourth Principal Meridian, as described hereon; and that from this evidence I established a new monument and accessories as described hereon to perpetuate the original location of this corner.

History of original corner establishment:

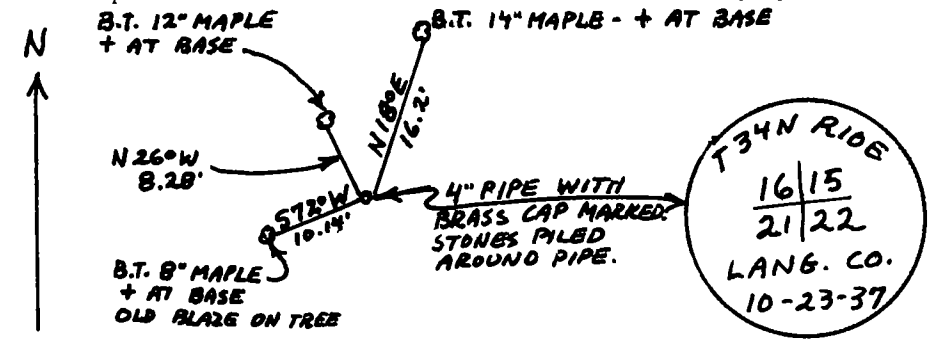
Description of corner evidence found:
LOCATED SECTION CORNER $\frac{16}{15}$ $\frac{21}{22}$ T. 34 N. - R. 10 E.
4" PIPE WITH BRASS CAP.



Resident witnesses:

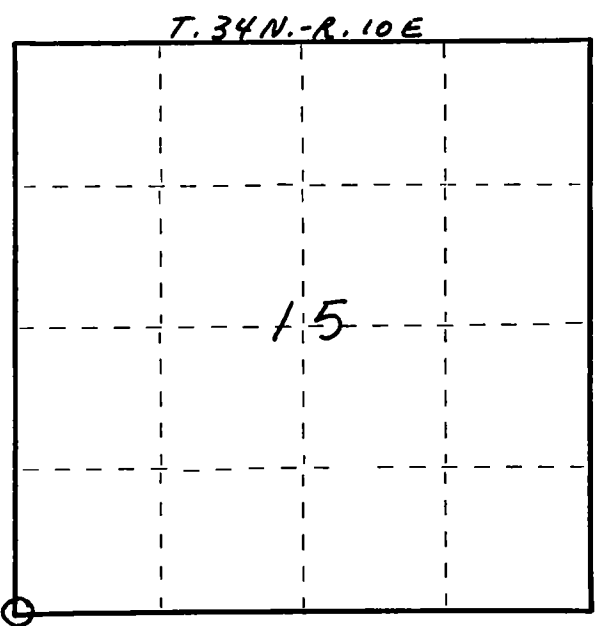
.....

Description of monument and accessories I established to perpetuate the original location of this corner.



MARKED BEARING TREES.
 NOTE: CORNER IS LOCATED APPROX. 350 FEET EAST OF PINE LAKE ROAD.

FORM 985 N. C. MILLER CO., MILWAUKEE



○ = Corner monument restored.

Dated at ELCHO, Wis., this 11TH day of DECEMBER, 1975

Signature William F. Kelly Title REGISTERED LAND SURVEYOR Registration No. 51098
 (County Surveyor, Registered Land Surveyor, or other duly authorized official)

Office of Register of Deeds, County of, I hereby certify that the within instrument was filed in this office for record on the day of, 19..... at o'clock M.

(Register of Deeds)

By Deputy