

CERTIFIED LAND CORNER RESTORATION

Index No. N-15

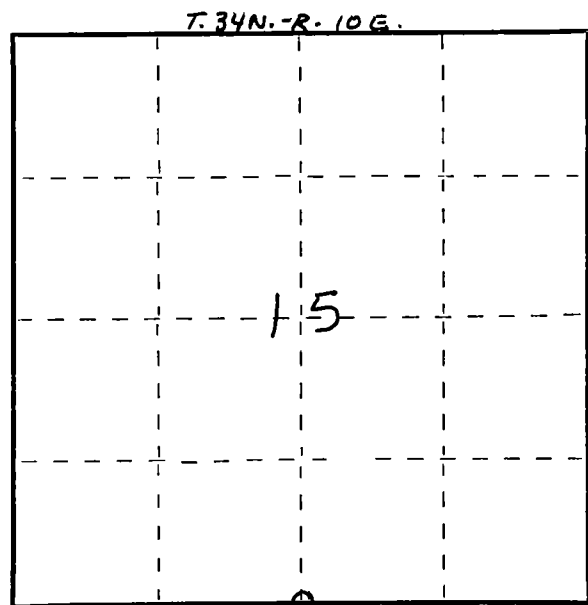
State of Wisconsin }  
County of LANGLADE } ss.

I WILLIAM F. KELLY, do hereby certify that on the 22nd day of DECEMBER, 1976, I found evidence of the 1/4 SECTION corner of SECTIONS 15 & 22 Township 34 North, Range 10 E, Fourth Principal Meridian, as described hereon; and that from this evidence I established a new monument and accessories as described hereon to perpetuate the original location of this corner.

Resident witnesses:

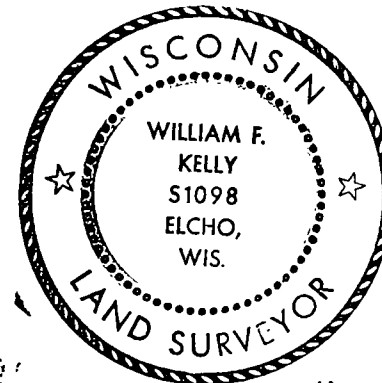
JOHN DREW

FORM 985 M. C. MILLER CO., MILWAUKEE



○ = Corner monument restored.

History of original corner establishment:



*William F. Kelly 12-22-76*

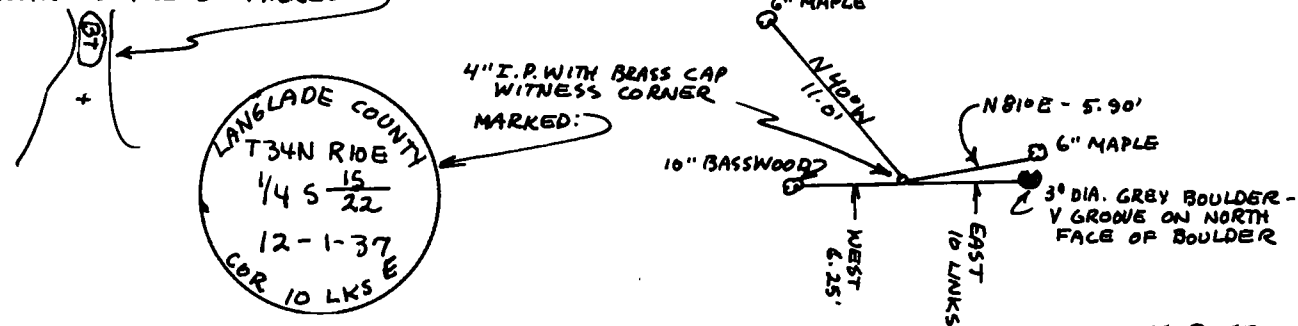
Description of corner evidence found:

LOCATED 4" PIPE WITH BRASS CAP AS A WITNESS CORNER TO THE 1/4 CORNER.

CORNER FALLS IN A V GROOVE ON THE NORTH FACE OF 3 FT. DIA. GRAY BOULDER 10 LINKS EAST OF BRASS CAP WITNESS CORNER.

Description of monument and accessories I established to perpetuate the original location of this corner.

MARKED WITNESS TREES TO BRASS CAP.  
WITNESS TREES MARKED:



Dated at ELCHO, Wis., this 22nd day of DECEMBER, 1976

Signature William F. Kelly Title REGISTERED LAND SURVEYOR Registration No. S1098  
(County Surveyor, Registered Land Surveyor, or other duly authorized official)

Office of Register of Deeds, County of \_\_\_\_\_, I hereby certify that the within instrument was filed in this office for record on the \_\_\_\_\_ day of \_\_\_\_\_, 19\_\_\_\_ at \_\_\_\_\_ o'clock \_\_\_\_\_ M.

(Register of Deeds)

By \_\_\_\_\_ Deputy