

CERTIFIED LAND CORNER RESTORATION

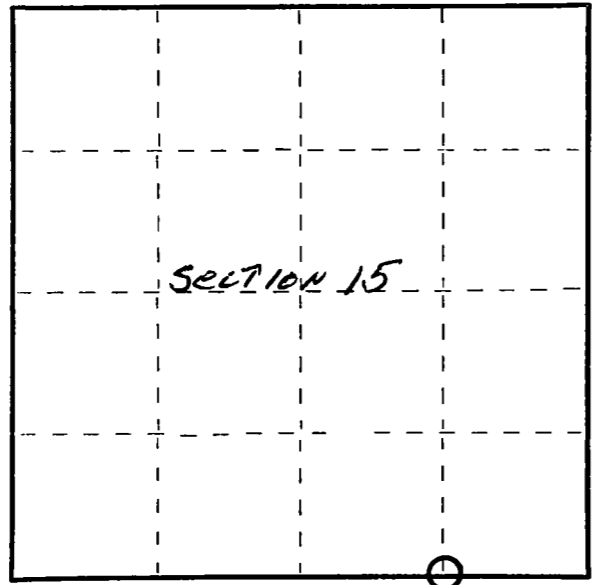
Index No. N-16

State of Wisconsin }  
County of Lafayette } ss.

I Raymond J. Hallisy, do hereby certify that on the 24<sup>th</sup> day of August, 19 74, I found evidence of the EAST 1/16 corner of 15, 22 Township 34, North, Range 10 E, Fourth Principal Meridian, as described hereon; and that from this evidence I established a new monument and accessories as described hereon to perpetuate the original location of this corner.

Resident witnesses:

.....  
.....  
.....



○ = Corner monument restored.

History of original corner establishment:

1930 RESURVEY

Description of corner evidence found:

SQUARED & SCRIBED CEDAR POST DOWN  
ROCK MOUND  
SCRIBED E 1/16 S 15, 22

Description of monument and accessories I established to perpetuate the original location of this corner.

SET 1 1/2 INCH PIPE WITH BRASS CAP  
ROCK MOUND  
NEW BT's  
HARD MAPLE 9" N 11° W 11 FT. 5 INCHES  
HARD MAPLE 7" S 55° E 5 FT. 11 INCHES



Dated at Apt 190, Wis., this 24<sup>th</sup> day of August, 19 74

Signature Raymond Hallisy Title Reg. Land Surveyor Registration No. 5-685  
(County Surveyor, Registered Land Surveyor, or other duly authorized official)

Office of Register of Deeds, County of \_\_\_\_\_, I hereby certify that the within instrument was filed in this office for record on the \_\_\_\_\_ day of \_\_\_\_\_, 19 \_\_\_\_\_ at \_\_\_\_\_ o'clock \_\_\_\_\_ M.

.....  
(Register of Deeds)

By..... Deputy