

CERTIFIED LAND CORNER RESTORATION

Index No. K-23

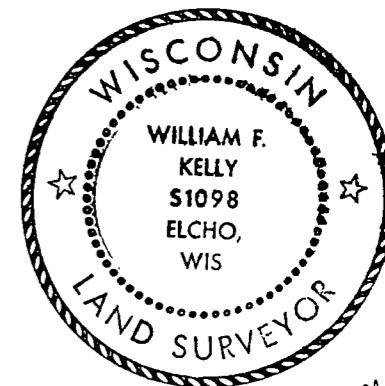
State of Wisconsin }  
County of LANGLADE } ss.

History of original corner establishment:

I WILLIAM F. KELLY, do hereby certify that on the 20TH day of DECEMBER, 1977, I found evidence of the N 1/8 corner of SECTION 13 Township 34, North, Range 10E, Fourth Principal Meridian, as described hereon; and that from this evidence I established a new monument and accessories as described hereon to perpetuate the original location of this corner.

Description of corner evidence found:

CORNER HAD BEEN DAMAGED BY GRADER OR PLOW.

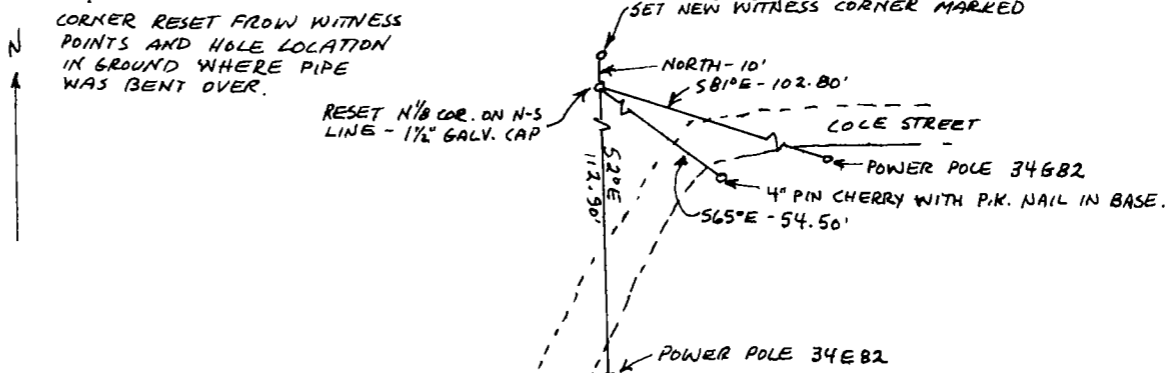


*William F. Kelly*

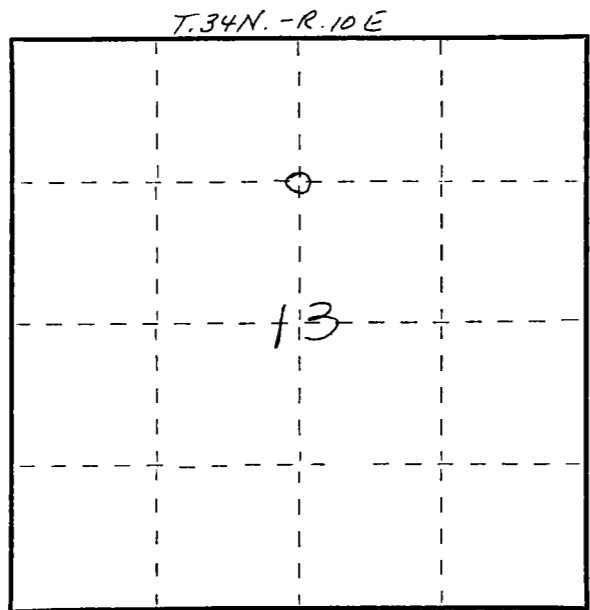
Resident witnesses:

.....  
.....  
.....

Description of monument and accessories I established to perpetuate the original location of this corner.



FORM 985 R. C. MILLER CO. MILWAUKEE



○ = Corner monument restored.

Dated at ELCHO, Wis., this 20TH day of DECEMBER, 1977.

Signature William F. Kelly Title REGISTERED LAND SURVEYOR Registration No. 51098  
(County Surveyor, Registered Land Surveyor, or other duly authorized official)

Office of Register of Deeds, County of \_\_\_\_\_, I hereby certify that the within instrument was filed in this office for record on the \_\_\_\_\_ day of \_\_\_\_\_, 19\_\_\_\_ at \_\_\_\_\_ o'clock \_\_\_\_\_ M.

(Register of Deeds)

By \_\_\_\_\_ Deputy

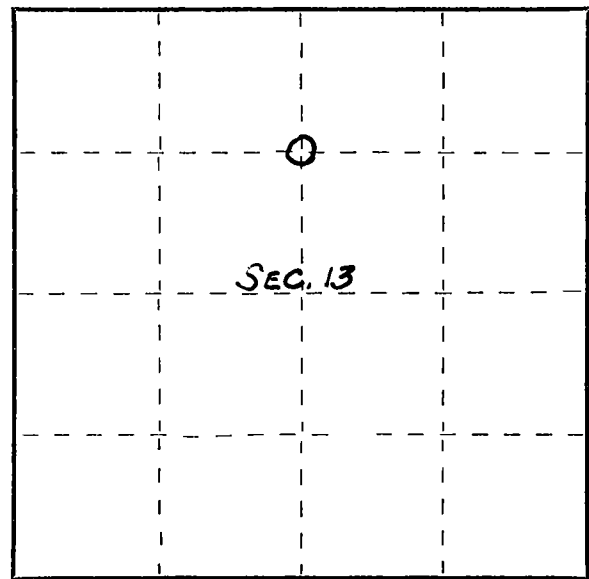
CERTIFIED LAND CORNER RESTORATION

34-10  
Index No. K-23

State of Wisconsin }  
County of Langlade } ss.

I, Robert J. Poss, do hereby certify that on the 17<sup>th</sup> day of May, 19 68, I found evidence of the N 1/4 on 1/4 line corner of Section 13 Township 34, North, Range 10 East, Fourth, Principal Meridian, as described hereon; and that from this evidence I established a new monument and accessories as described hereon to perpetuate the original location of this corner.

Resident witnesses:  
.....  
.....  
.....



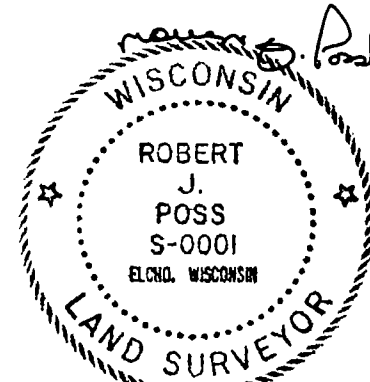
○ = Corner monument restored.

History of original corner establishment:

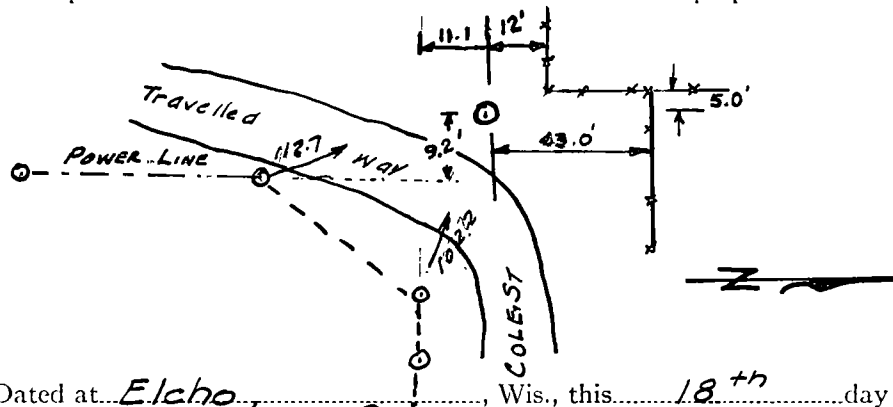
Description of corner evidence found:

Corner is 1 1/2" pipe set by C. Borth. Attest by C.C. Handey side  
Cap is marked with an arrow welded in top

Set marks:  
N 1/4 Post on 1/4 Line  
Sec. 13-34-10.



Description of monument and accessories I established to perpetuate the original location of this corner.



Dated at Elcho, Wis., this 18<sup>th</sup> day of May, 19 68.

Signature Robert J. Poss Title Reg. Land Surveyor Registration No. 5-1  
(County Surveyor, Registered Land Surveyor, or other duly authorized official)

Office of Register of Deeds, County of....., I hereby certify that the within instrument was filed in this office for record on the..... day of....., 19..... at..... o'clock..... M.

.....  
(Register of Deeds)

By..... Deputy