

LANGLADE COUNTY U.S. PUBLIC LAND CORNER RESTORATION

The South Quarter corner of Section 12, T. 34 N., R. 10 E., Langlade County, WI.

Corner was: (check all that apply)

4341012 0020

- Restored through acceptance of an obliterated evidence location.
- Restored through acceptance of a found perpetuated location.
- Determined to be lost and re-established through proportionate methods.
- Show bearings and distances to PLSS corners used for proportioning, and show original distances).
- Restored/recovered/re-established in a location that differs from a previously established position.
- (Show difference in plan view below).
- Check here if additional information is shown on the reverse side of this form.

Describe record evidence, recovered physical evidence, occupational evidence, testimonial evidence and all other evidence considered in the recovery/restoration of the corner.

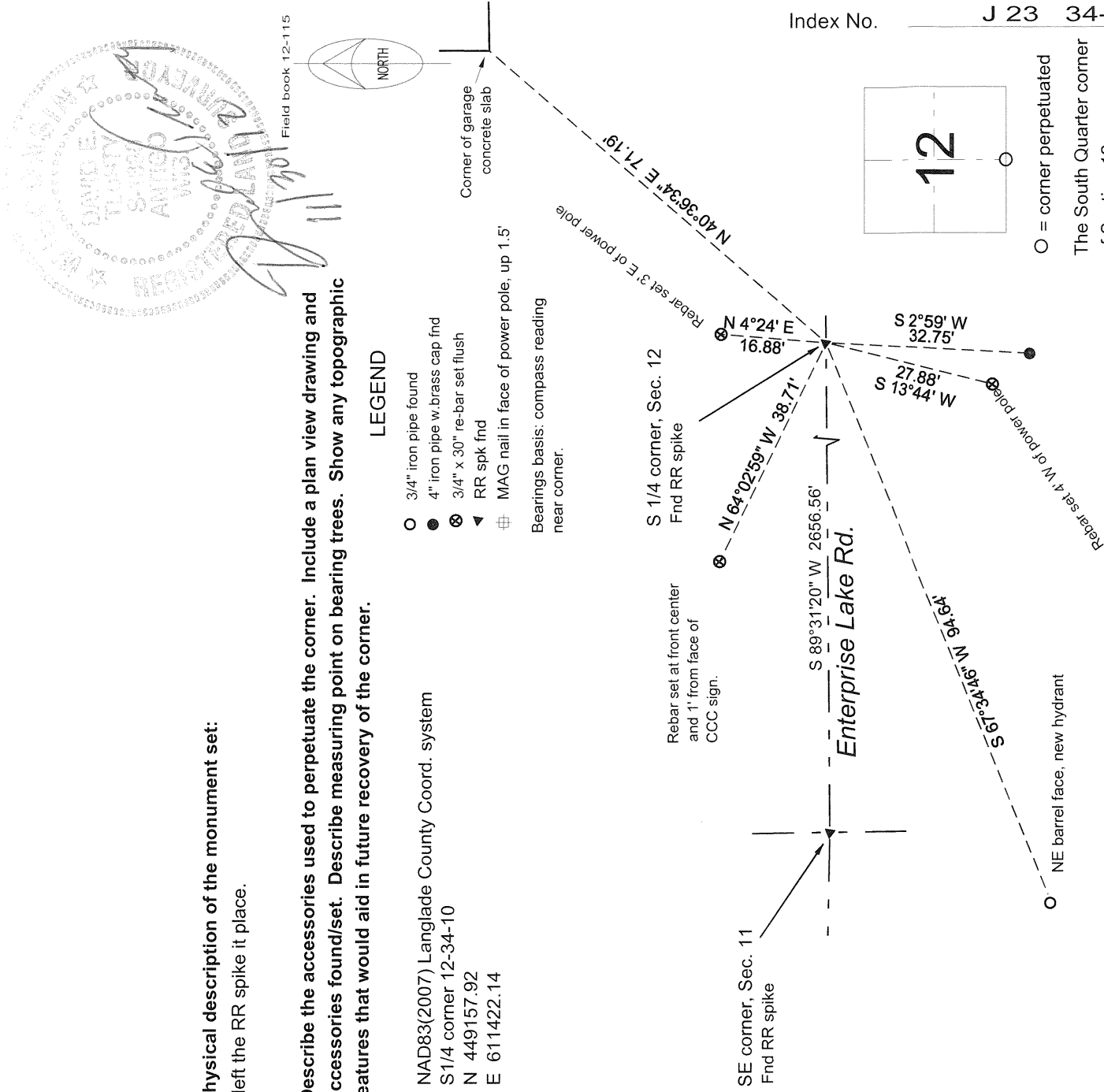
The original corner was established in 1865 by James Nowlin. Original bearing tree: W pine, 10", S20W, 25 links and a tamarac, 12", N27E, 10 links. In 1937, Darwin Hintz resurveyed this township and described the corner: "This 1/4 Cor. reset by running the 1/4 line of Sec. 13 and using Dorr's old measurements." In 1987, former surveyor Kelly said "Located wit. cor. to S 1/4 cor sect 12 T34N R10E set by CCC in 1937. Set RR spike at corner location 6 ft. north of CL Twn Rd. Marked wit. trees" 8/30/2012 D. Tlusty, in advance of road paving, I found a railroad spike and measured to reference marks described below.

Physical description of the monument set:

I left the RR spike in place.

Describe the accessories used to perpetuate the corner. Include a plan view drawing and accessories found/set. Describe measuring point on bearing trees. Show any topographic features that would aid in future recovery of the corner.

NAD83(2007) Langlade County Coord. system
S 1/4 corner 12-34-10
N 449157.92
E 611422.14



Index No. J 23 34-10

\circ = corner perpetuated
The South Quarter corner of Section 12, T. 34 N., R. 10 E., Langlade County, WI

I, David E. Tlusty, Registered Land Surveyor, as Langlade County Surveyor, certify that the corner location on this record was determined by me and that this U.S. Public Land Survey Monument Record is correct to the best of my knowledge and belief.