

U.S. PUBLIC LAND SURVEY MONUMENT RECORD

(Prepared and as required by S. A-E 7.08 WI Administrative Code)

The NE SECTION corner of Section 13, T. 34 N., R. 10 E., Langlade County, WI

Corner was: (check all that apply)

- Restored through acceptance of an obliterated evidence location.
- Restored through acceptance of a found perpetuated location.
- Determined to be lost and re-established through proportionate methods.
(Show bearings and distances to PLSS corners used for proportionating.)
- Restored/recovered/reestablished in a location that differs from a previously established position. (Show difference in plan view below.)

3410120000

- Check here if additional information is shown on the reverse side of this form.

Describe record evidence, recovered physical evidence, occupational evidence, testimonial evidence and all other evidence considered in the recovery/restoration of the corner.

1859 ORIGINAL CORNER ESTABLISHED BY HIRAM C. FELLOWS.

ORIGINAL BT'S: FIR 6 554W 10 lks. BIRCH 16 N46E 14 lks.
BIRCH 10 N10W 12 lks. BIRCH 12 S33E 9 lks.

1881 DORR MEAS. 86.10 ch. (5682.60') FROM SE TO NE CORNERS SECTION 13.

1936 HINTZ SET STONE FOR COR. (6x8x30) BROKEN DISHES AT BOTTOM.
SET WIT. COR. 2 lks. SOUTH. NO BT'S.

1975 KELLY MEAS. 86.42 ch. (5703.72') FROM SE TO NE CORNERS SECTION 13.
FOUND STONE W/"X" ON TOP, IN GOOD CONDITION.

FOUND WIT. COR. 2 lks. SOUTH.

SET 1 1/2" WIT. COR. 2 lks. NORTH

NBT'S: OAK 14" N78E 46.7', ELM 12" S2°30'E 50.4'

Physical description of the monument -set-

2000 DEAN WILLIAMS FOUND STONE "X" ON TOP.

MAY FOUND HINTZ WIT. COR. 4" B.C.I.P. JUST SOUTH.

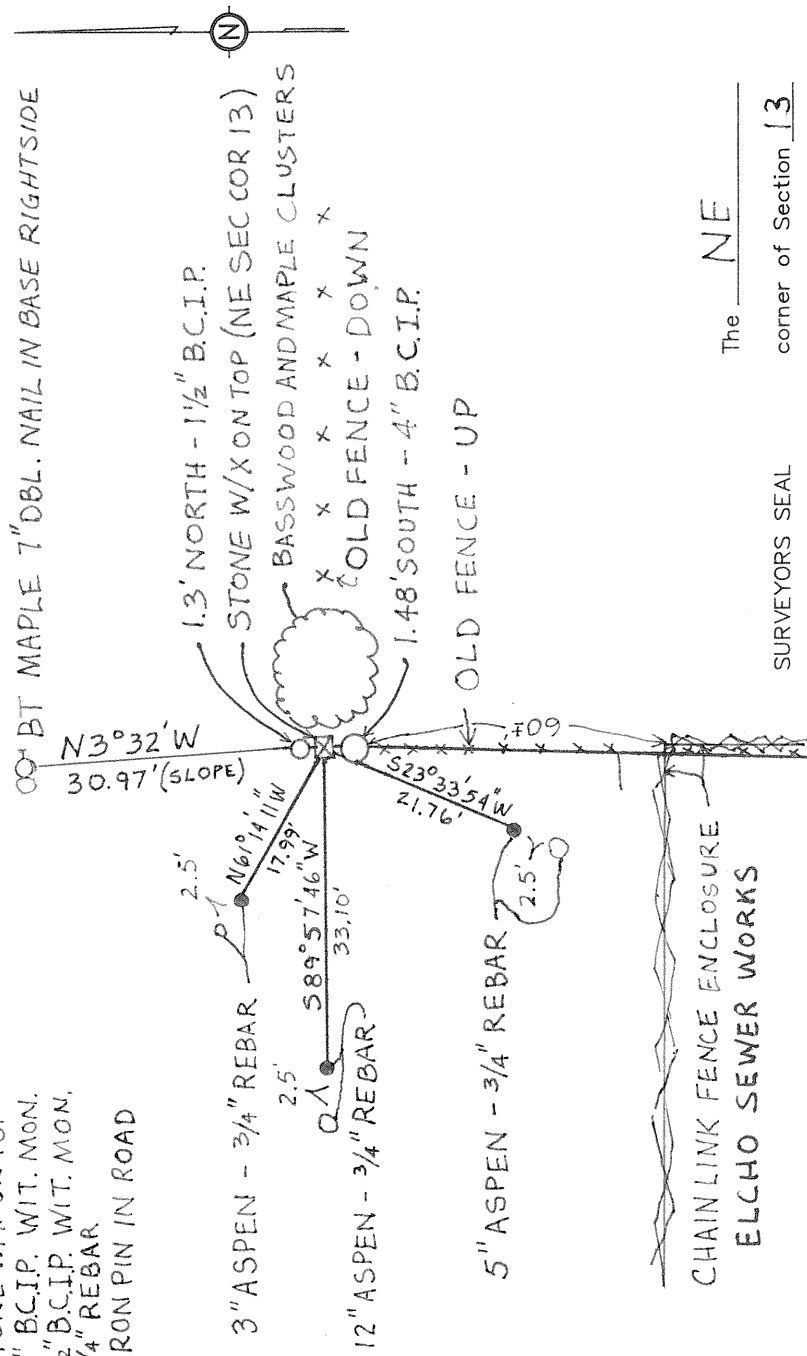
ZND FOUND KELLY WIT. COR. 1 1/2" B.C.I.P. JUST NORTH.

FOUND KELLY BT'S BOTH DOWN AND DEAD.

Describe the accessories used to perpetuate the location of the corner. Include a plan view drawing and indicate accessories found/set. Describe measuring point on bearing trees. Show any topographic features that would aid in future recovery of the corner.

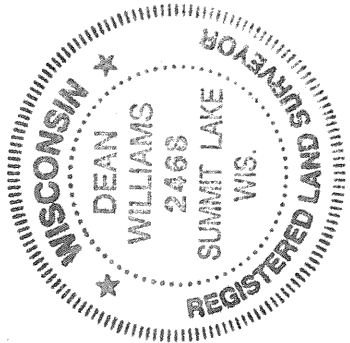
LEGEND - SCALE 1" = 20'

- ⊗ - STONE W/X ON TOP
- - 4" B.C.I.P. WIT. MON.
- - 1 1/2" B.C.I.P. WIT. MON.
- - 3/4" REBAR
- ⊕ - IRON PIN IN ROAD



INDEX No. J25
34-10

The NE corner of Section 13
T. 34 N., R. 10 E.
Langlade County, WI



(HINTZ MEAS. 2865.72) →
(E 1/4 COR SEC 13) S1°10'23"W, 2864.78' ⊕

I, DEAN WILLIAMS RLS-2468, certify that the corner location shown on this record was determined by me or under my direction and control and that this U.S. Public Land Survey Monument Record is correct and complete to the best of my knowledge and belief.

Dean Williams 06/09/2000
Signature Date

○ = Location of corner