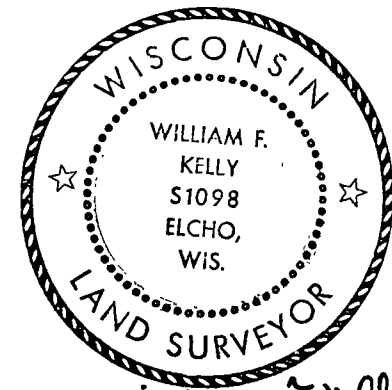


CERTIFIED LAND CORNER RESTORATION

Index No. J-25  
J-1-R 11E



*William F. Kelly*

State of Wisconsin }  
 County of LANGLADE } ss.

History of original corner establishment:  
STONE SET BY DORR.

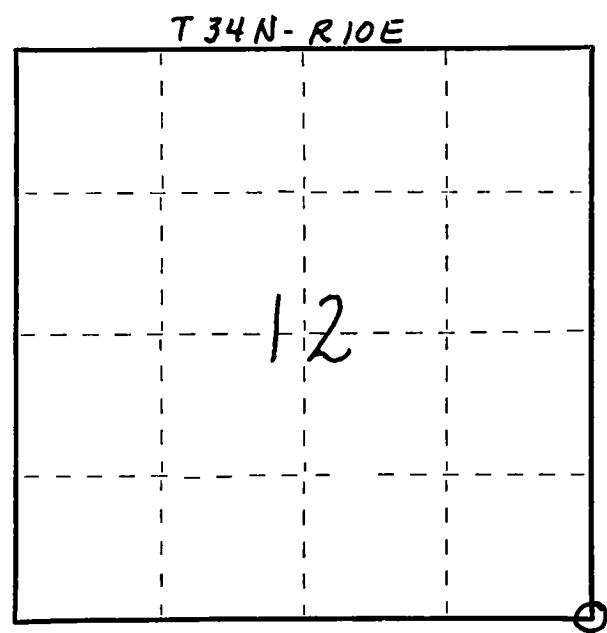
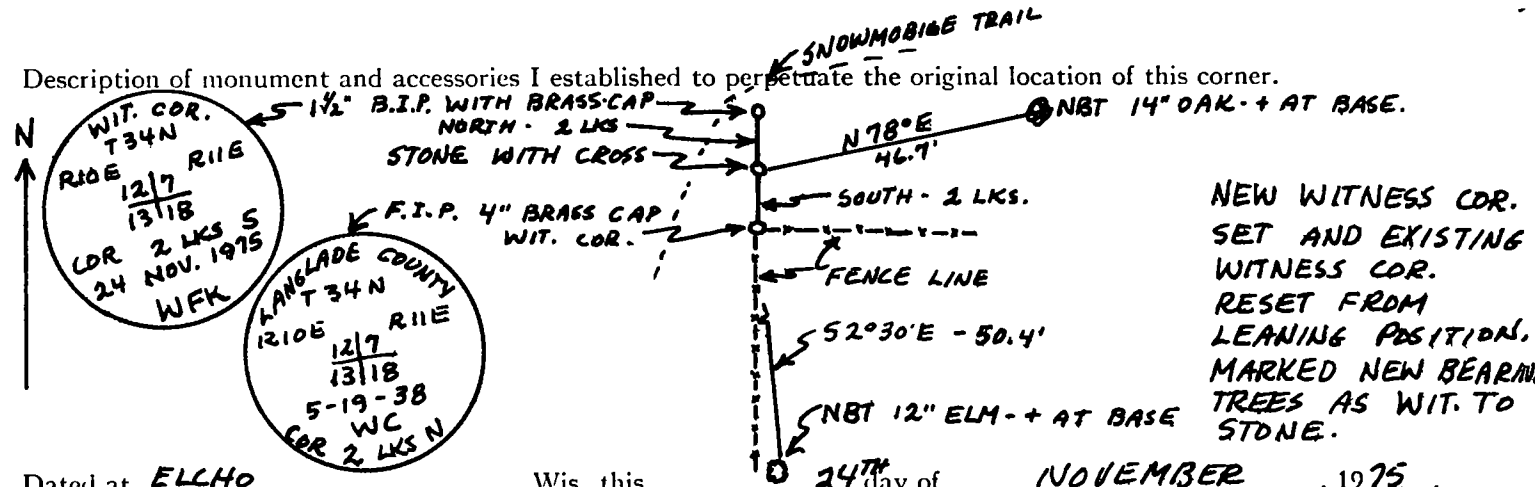
I WILLIAM F. KELLY, do hereby certify that on the 24TH day of NOVEMBER, 1975, I found evidence of the SECTION corner of SECTIONS 12, 7, 13, & 18 Township 34, North, Range 10E & 11E, Fourth Principal Meridian, as described hereon; and that from this evidence I established a new monument and accessories as described hereon to perpetuate the original location of this corner.

Description of corner evidence found:  
LOCATED STONE WITH + ON TOP - IN GOOD CONDITION. - AND ONE WITNESS MONUMENT. SECTION 12/7 13/18 T.34N. - R.10E. & 11E.

Resident witnesses:

.....  
 .....  
 .....

Description of monument and accessories I established to perpetuate the original location of this corner.



Dated at ELCHO, Wis., this 24TH day of NOVEMBER, 1975.

Signature William F. Kelly Title REGISTERED LAND SURVEYOR Registration No. 51098  
 (County Surveyor, Registered Land Surveyor, or other duly authorized official)

Office of Register of Deeds, County of....., I hereby certify that the within instrument was filed in this office for record on the..... day of....., 19..... at..... o'clock..... M.

(Register of Deeds)

By..... Deputy

○ = Corner monument restored.

FORM 985 R C MILLER CO. MILWAUKEE