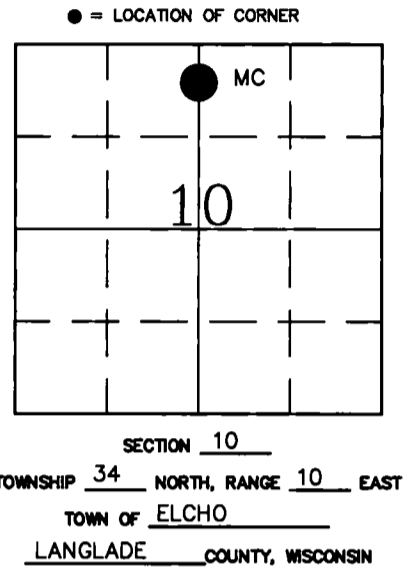


4341010 3520

U.S. PUBLIC LAND SURVEY MONUMENT RECORD

HISTORY OF ORIGINAL CORNER ESTABLISHMENT AND SUBSEQUENT RESTORATION AND DESCRIPTION OF ANY RECORD, MONUMENT OCCUPATIONAL, TESTIMONIAL OR OTHER EVIDENCE CONSIDERED:

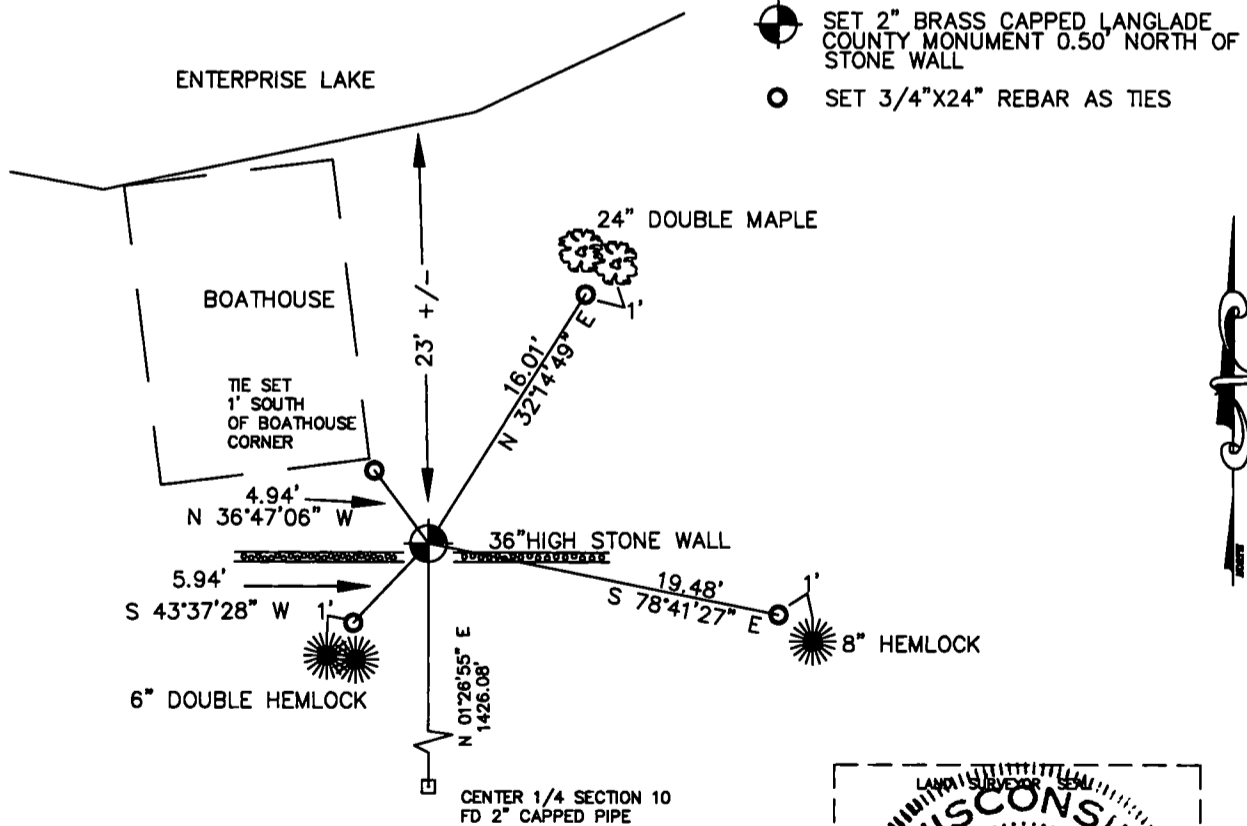
THIS MEANDER CORNER WAS NOT SET IN THE ORIGINAL PUBLIC SURVEY.
THIS MC WAS PLACED ON A LINE DRAWN FROM THE FOUND 2" CAPPED PIPE USED AS THE CENTER OF SECTION 10 THROUGH BARB WIRE FENCE THAT WAS FOUND JUST SOUTH OF ENTERPRISE LAKE RD. USING THIS LINE, THE SOUTH 1/4 CORNER OF SECTION 10 FALLS 10.64' WEST OF THIS LINE, LOT CORNERS FROM CSM VOL 3, PAGE 71 FALL WITHIN 0.40', AND THE OCCUPATION LINE BETWEEN THE W11448 AND W11444 PARCELS ON THE SOUTH SHORE OF ENTERPRISE LAKE MATCHES WELL.



CORNER WAS: (CHECK ALL THAT APPLY)

- RESTORED THROUGH ACCEPTANCE OF AN OBLITERATED EVIDENCE LOCATION
- RESTORED THROUGH ACCEPTANCE OF A FOUND PERPETUATED LOCATION
- CONSIDERED A LOST CORNER AND REESTABLISHED THROUGH LOST CORNER PROPORTIONATE METHODS (INCLUDE A PLAN VIEW DRAWING SHOWING DISTANCES AND DIRECTIONS TO OTHER PUBLIC LAND SURVEY CORNERS USED FOR PROPORTIONING AND DETERMINING THE CORNER LOCATION)
- RESTORED OR REESTABLISHED IN A LOCATION THAT DIFFERS FROM A PREVIOUS RESTORATION OR REESTABLISHMENT (INCLUDE A PLAN VIEW DRAWING AND INDICATE WHAT WAS SET AND/OR FOUND)
- CHECK IF THERE IS ADDITIONAL INFORMATION ON BACK

DESCRIBE THE MONUMENT AND ACCESSORIES USED TO PERPETUATE THE LOCATION OF THE CORNER. (INCLUDE A PLAN VIEW DRAWING AND INDICATE WHAT WAS SET AND/OR FOUND) ALSO INCLUDE FOUR TIES TO THE SECTION CORNER AND DESCRIPTION OF THE TIES.

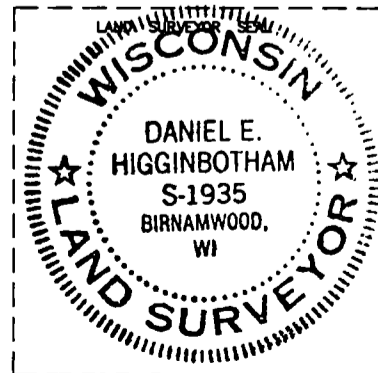


DANIEL E. HIGGINBOTHAM

(type or print name) CERTIFY THAT THE CORNER LOCATION SHOWN ON THIS RECORD WAS DETERMINED BY ME OR UNDER MY DIRECTION AND CONTROL AND THAT THIS U.S. PUBLIC LAND SURVEY MONUMENT RECORD IS CORRECT AND COMPLETE TO THE BEST OF MY KNOWLEDGE AND BELIEF.

Daniel E. Higginbotham 12/06/06

SIGNATURE DATE



E-F-15
INDEX NO.