

LANGLADE COUNTY U.S. PUBLIC LAND CORNER RESTORATION

The East Quarter corner of Section 10, T. 34 N., R. 10 E., Langlade County, WI.

4341010 2000

Corner was: (check all that apply)

- Restored through acceptance of an obliterated evidence location.
- Restored through acceptance of a found perpetuated location.
- Determined to be lost and re-established through proportionate methods.
Show bearings and distances to PLSS corners used for proportioning, and show original distances).
- Restored/recovered/re-established in a location that differs from a previously established position.
(Show difference in plan view below)
- Check here if addition information is shown on the reverse side of this form.

Describe record evidence, recovered physical evidence, occupational evidence, testimonial evidence and all other evidence considered in the recovery/restoration of the corner.

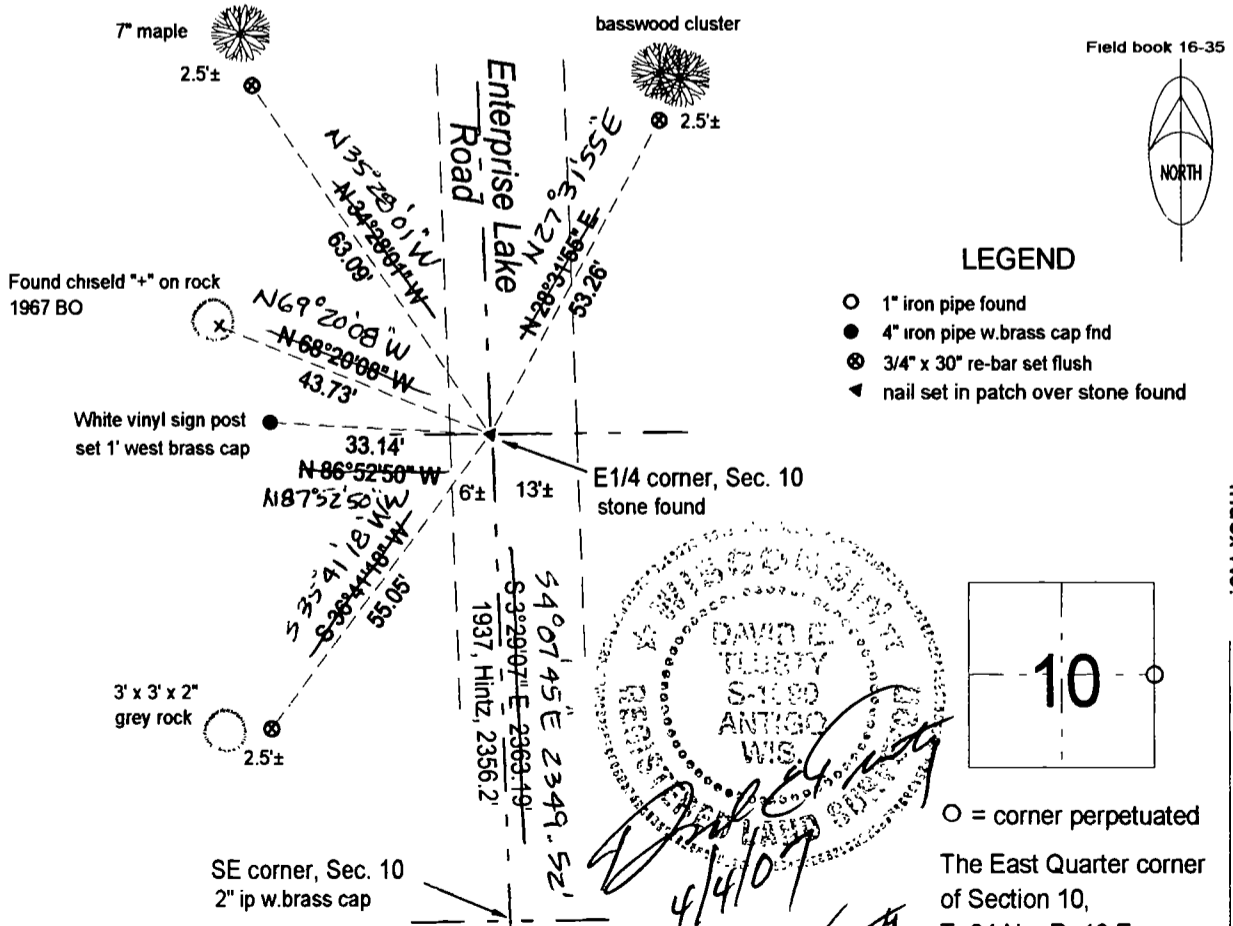
The original corner was established in 1865 by James L. Nowlin. Original bearing trees: birch, 8", S81°W, 12 lks. and a hemlock, 10", N80°E, 15 lks. In 1899, B.F. Dorr, found original hemlock standing and marked 2 new BT's: oak, 12", N80°W, 85 lks. and an ash, 6" S49°E 122-1/4 lks. He described the corner as "set stone 4"x 4"x 32" with X on top and side, E 1/4 post of 10". In 1937 Darwin Hintz re-surveyed this township and said: "North between 10-11, 35.70 chains, to 1/4 corner in road (stone). Set witness corner 50 lks. west, also cross on large rock, N71-1/2°W, 66 lks....." In 1981, Ray Hallisy found the 4" witness corner and tied it to 3 maple BT's. June 10 1998. David Tlusty and Dean Williams found a nail in road 33' east of the brass capped witness corner and 43.30' from "x" on rock found N71°W. Temporary tied the nail. Dug in road. Down 0.4' found stone, triangular shaped on top (0.4'x 0.4'x 0.3') with clear chiseled X on top. Accepted the stone as best evidence of the original corner location. Stone found is 1.08' South of nail found. Resident witness Grandpa John Nietcke said he always knew the witness monument was there but didn't know of the stone in the road.. "Well I'll be!" he stated when told about the stone. Set a 1/2" x 48" rebar (angling to east) on east edge of stone.

Physical description of the monument set:

For the corner, I set a nail and alum. tab in patched road over the stone found.

Describe the accessories used to perpetuate the corner. Include a plan view drawing and accessories found/set. Describe measuring point on bearing trees. Show any topographic features that would aid in future recovery of the corner.

*7/8/08 DT
SEE OVER
→*



Index No. G17 34-10

I, David E. Tlusty, Registered Land Surveyor, as Langlade County Surveyor certify that the corner location on this record was determined by me and that this U.S. Public Land Survey Monument Record is correct to the best of my knowledge and belief.

4/4/10 DT
Revised 7/8/08 D. Tlusty

4/08/08 D. TLUSTY

TODAY I DISCOVERED A COMPUTATIONAL ERROR IN
THE OPEN TRAVERSE RUNNING TO THIS CORNER.
I HAVE CHANGED DATA ON THE FRONT SIDE
OF THIS FORM FOR THAT REASON.

4/8/08 D. TLUSTY

CERTIFIED LAND CORNER RESTORATION

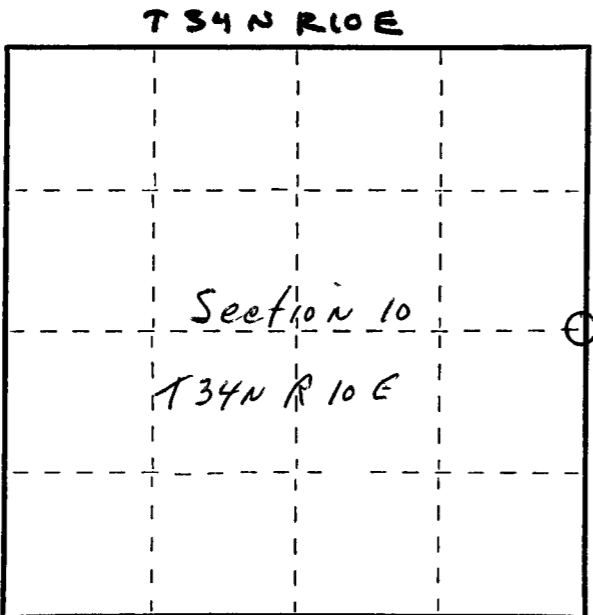
Index No. G-17

State of Wisconsin }
County of Langlade } ss.

I Raymond J. Hallisy, do hereby certify that on the 7th day of March, 1981, I found evidence of the 1/4 corner of Section 10 & 11 Township 34, North, Range 10E, Fourth Principal Meridian, as described hereon; and that from this evidence I established a new monument and accessories as described hereon to perpetuate the original location of this corner.

Resident witnesses:

.....
.....
.....



○ = Corner monument restored.

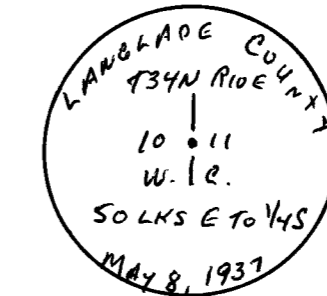
History of original corner establishment:
Corner set in the 1930 resurvey.

Description of corner evidence found:
4" pipe with brass cap. Witness corner

Description of monument and accessories I established to perpetuate the original location of this corner.

New BT's to witness corner

- 10" Hard Maple N65W 12'10"
- 6" Hard Maple S68W 13'1"
- 8" Hard Maple S13E 18'2"



Dated at Antigo, Wis., this 7th day of March, 1981

Signature Raymond J. Hallisy Title Reg. Surveyor Registration No. 685
(County Surveyor, Registered Land Surveyor, or other duly authorized official)

Office of Register of Deeds, County of _____, I hereby certify that the within instrument was filed in this office for record on the _____ day of _____, 19____ at _____ o'clock _____ M.

.....
(Register of Deeds)
By..... Deputy

*3/6/96 D.T.
RE-SURVEY INFO SHOWS
CORNER AS STONE IN RD
P.M. CROSS ON LARGE ROCK N71 1/2 W 66 LKS
SUMP N67 W 42 1/4 LKS*