

# LANGLADE COUNTY U.S. PUBLIC LAND CORNER RESTORATION

The South Quarter corner of Section 10, T. 34 N., R. 10 E., Langlade County, WI.

Corner was: (check all that apply)

4341010 0020

- Restored through acceptance of an obliterated evidence location.
- Restored through acceptance of a found perpetuated location.
- Determined to be lost and re-established through proportionate methods.  
Show bearings and distances to PLSS corners used for proportioning, and show original distances).
- Restored/recovered/re-established in a location that differs from a previously established position.  
(Show difference in plan view below).
- Check here if addition information is shown on the reverse side of this form.

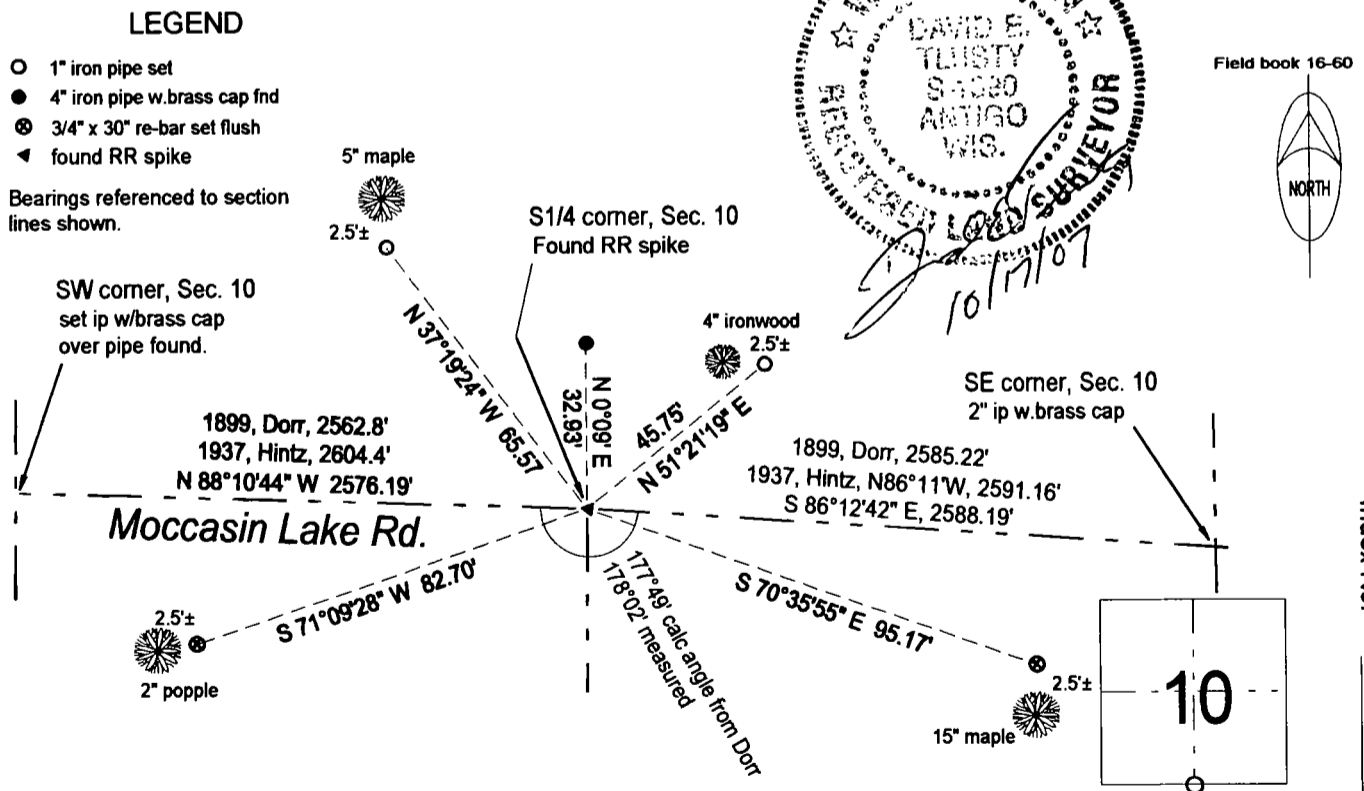
**Describe record evidence, recovered physical evidence, occupational evidence, testimonial evidence and all other evidence considered in the recovery/restoration of the corner.**

The original corner was established in 1865 by James L. Nowlin. Original bearing trees: lind., 24", S71°E, 15 lks., and a birch, 8", N35°W, 20 lks. In 1899, Dorr made new BT: sugar, 7", N15-1/4E, 22 lks. and measured north, east and west from here. In 1937, Hintz described this corner as; "To 1/4 corner which falls in north ditch of road. Clearing on south side of road. Set witness corner 50 lks., north". In 1978, former surveyor Kelly located 4" brass cap witness corner set on 1938 re-survey of township. Set 1" iron pipe below road surface 33' south of witness corner and made 3 new BTs. and found a property corner; iron pipe S7°W, 37.67'. In 1985, Kelly re-marked the corner with railroad spike after 1985 road work, also 3 BT's., In 1998, D. Tlusty & D. Williams found RR spike in road, 32.05' south of the witness corner. Kellys BT's NE and SW are gone, SE tree is not usable. Accepted RR spike as found and added ties as shown below.

**Physical description of the monument set:**

For the corner, I left the RR spike as found.  
Set a white vinyl sign post 1.2' north of the 4" witness monument.

**Describe the accessories used to perpetuate the corner. Include a plan view drawing and accessories found/set. Describe measuring point on bearing trees. Show any topographic features that would aid in future recovery of the corner.**



○ = corner perpetuated  
The South Quarter corner of Section 10, T. 34 N., R. 10 E., Langlade County, WI

I, David E. Tlusty, Registered Land Surveyor, as Langlade County Surveyor, certify that the corner location on this record was determined by me and that this U.S. Public Land Survey Monument Record is correct to the best of my knowledge and belief

Index No. J15 34-10

# U. S. PUBLIC LAND SURVEY MONUMENT RECORD

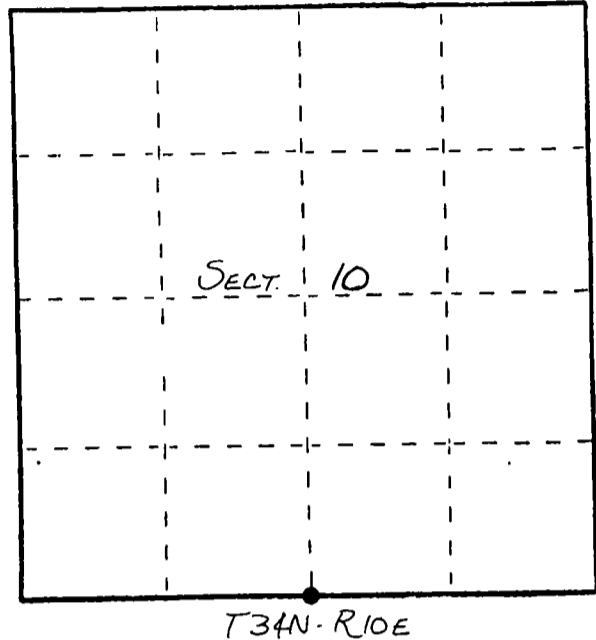
**INSTRUCTIONS :** This record shall show the location of the corner and shall include all of the following nine elements (a through i).

- (a) Identify the corner by reference to the U.S. public land survey system.  
 ○ = Corner monument restored.

ORIGINAL CORNER ESTABLISHED BY  
 JAMES L. NOWLIN IN JULY, 1865.

CORNER PERPETUATED ON 1938 RESURVEY  
 & WITNESSED IN 1978.

CORNER RESET AFTER ROADWORK IN 1985

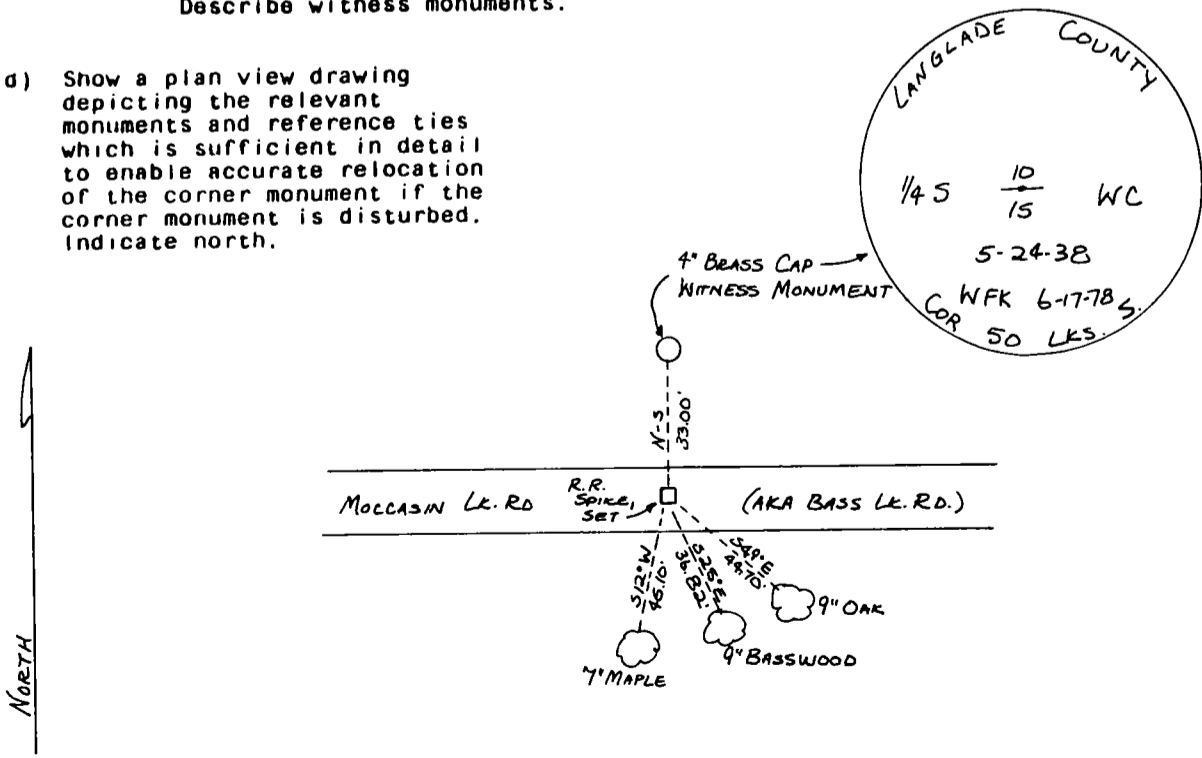


- (b) Describe any record evidence, monument evidence, occupational evidence, testimonial evidence or any other material evidence you considered, and whether the monument was found or placed.

SET R.R. SPIKE FROM EXISTING BT'S.  
 SCRIBED 2 NEW BT'S.

- (c) In the plan view drawing below, provide reference ties to at least 4 witness monuments, or, if the location is within a municipality, to at least 2 witness monuments. (Witness monuments shall be made of concrete, natural stone, iron or other equally durable material.) Describe witness monuments.

- (d) Show a plan view drawing depicting the relevant monuments and reference ties which is sufficient in detail to enable accurate relocation of the corner monument if the corner monument is disturbed. Indicate north.



(e) Describe any material discrepancy between the location of the corner as restored or reestablished and the location of that corner as previously restored or reestablished by distance and direction. Show the discrepancy on the plan view drawing under (d), above. Show the distances between the corner as previously restored or reestablished and (1) the corner as restored or reestablished, and (2) to at least 2 of the witness monuments shown on the drawing in (d), above.

NONE

(f) Was the corner restored through acceptance of (1) an obliterated evidence location, or, (2) a found perpetuated location?

(2)

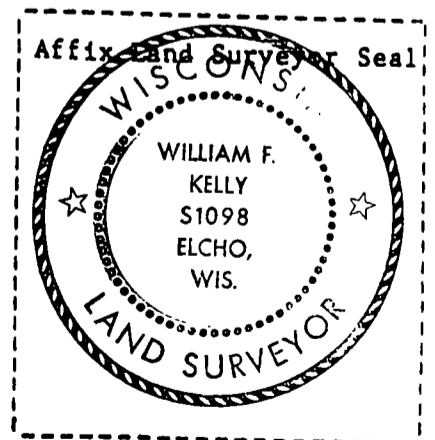
(g&h) Was the corner reestablished through lost corner proportionate methods? If so, show the method, including the directions and distances to other public land survey corners used as evidence or used for proportioning in determining the corner location?

No

(1) I, WILLIAM F. KELLY  
(type or print name) certify that the corner location shown on this record was determined by me or under my direction and control and that this U.S. Public Land Survey Monument Record is correct and complete to the best of my knowledge and belief.

William F. Kelly  
Signature

6-2-87  
Date



CERTIFIED LAND CORNER RESTORATION

Index No. 9-15

State of Wisconsin }  
County of LANGLADE } ss.

I WILLIAM F. KELLY, do hereby certify that on the 17 day of JUNE, 1978, I found evidence of the SOUTH 1/4 corner of SECTION 10 Township 34 North, Range 10, Fourth Principal Meridian, as described hereon; and that from this evidence I established a new monument and accessories as described hereon to perpetuate the original location of this corner.

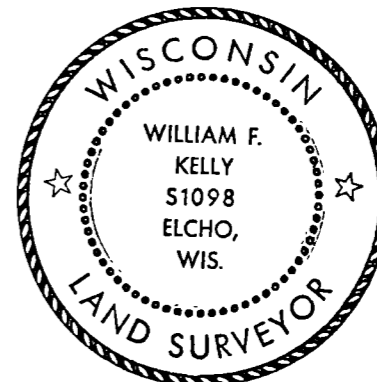
Resident witnesses:

.....  
.....  
.....

History of original corner establishment:

Description of corner evidence found:

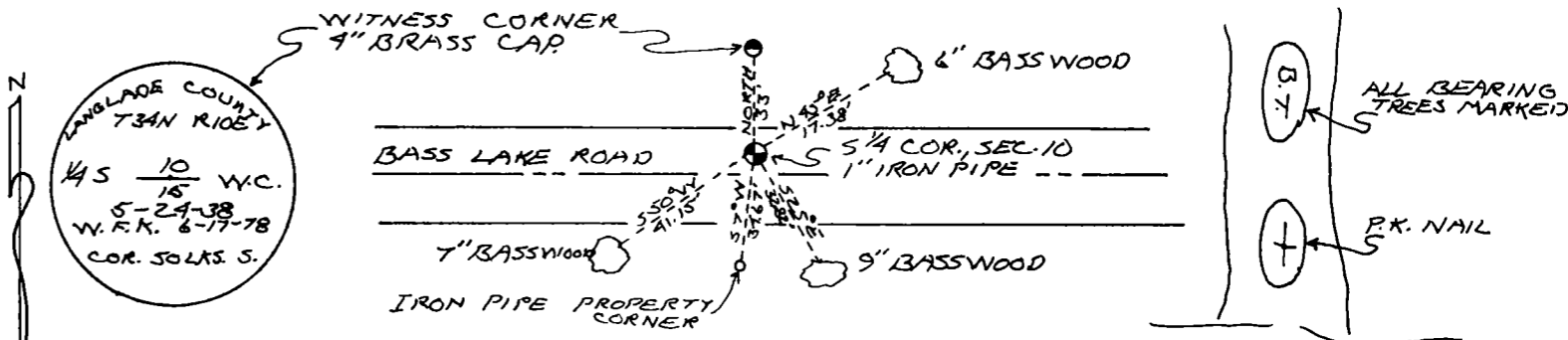
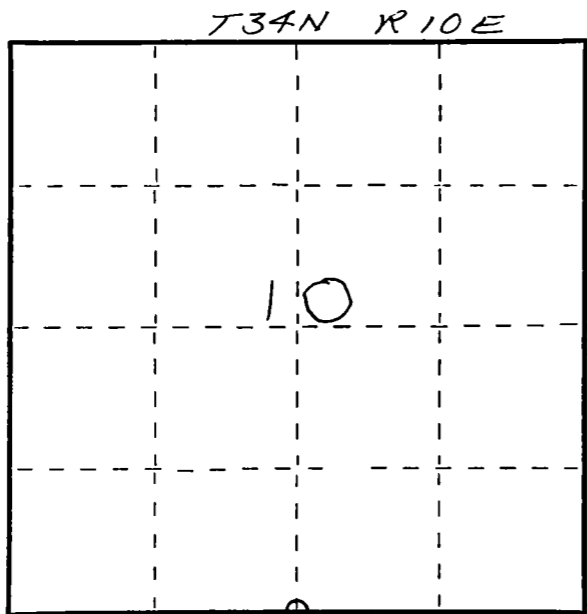
LOCATED 4" BRASS CAP WITNESS CORNER SET ON 1938 RE-SURVEY OF TOWNSHIP



William F. Kelly

SET 1" IRON PIPE BELOW SURFACE OF ROAD & MARKED B.T. ALSO INITIALIZED & DATED BRASS CAP

Description of monument and accessories I established to perpetuate the original location of this corner.



Dated at ELCHO, Wis., this 13 day of DECEMBER, 1978

Signature: William F. Kelly Title: COUNTY SURVEYOR Registration No. 5-1098  
(County Surveyor, Registered Land Surveyor, or other duly authorized official)

Office of Register of Deeds, County of \_\_\_\_\_, I hereby certify that the within instrument was filed in this office for record on the \_\_\_\_\_ day of \_\_\_\_\_, 19\_\_\_\_ at \_\_\_\_\_ o'clock \_\_\_\_\_ M.

(Register of Deeds)

By \_\_\_\_\_ Deputy

○ = Corner monument restored.