

LANGLADE COUNTY U.S. PUBLIC LAND CORNER RESTORATION

The South Quarter corner of Section 9, T. 34 N., R. 10 E., Langlade County, WI.

Corner was: (check all that apply)

- Restored through acceptance of an obliterated evidence location.
- Restored through acceptance of a found perpetuated location.
- Determined to be lost and re-established through proportionate methods.
- Show bearings and distances to PLSS corners used for proportioning, and show original distances).
- Restored/recovered/re-established in a location that differs from a previously established position.
- (Show difference in plan view below).
- Check here if addition information is shown on the reverse side of this form.

4341009 0020

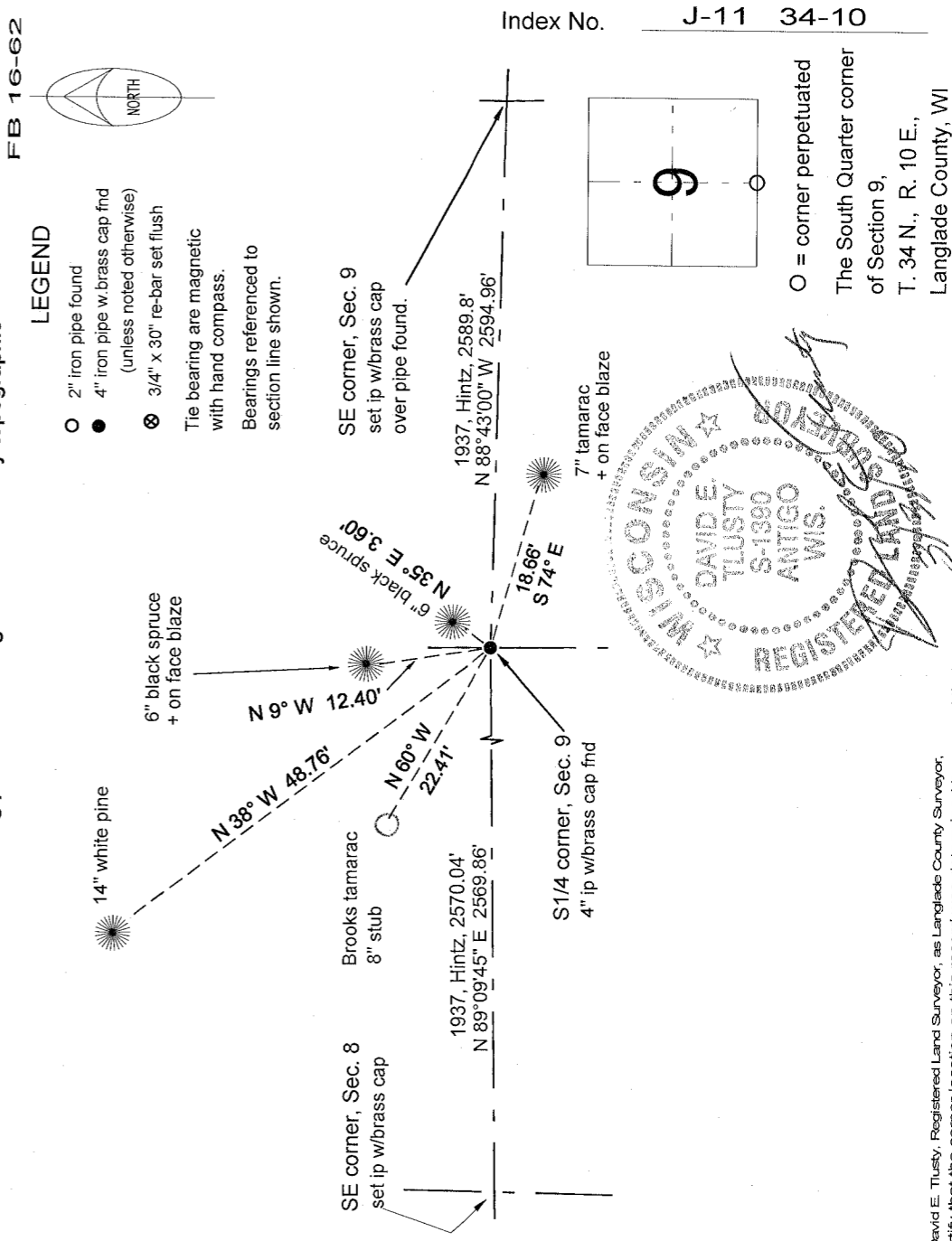
Describe record evidence, recovered physical evidence, occupational evidence, testimonial evidence and all other evidence considered in the recovery/restoration of the corner.

The original corner was established in 1865 by James L. Nowlin. Original bearing trees: tamarac, 4", S74°W, 11 links and a tamarac, 5", N50°E, 7 links. Brooks, date unknown, marked new BT's: tamarac, 8", N62°W, 34 links (22.4') and a tamarac, S44°W, 27.75 links. In the 1937 resurvey, Hintz said: "to 1/4 cor in fence line. Re'est. BT tam, 8", N62W, 34 lks and a tamarac, 8", S44°W, 27.75 links". In 1975, former surveyor Kelly found the 1937 monument and made new ties. On 10/21/98, D. Tlusty and D. Williams found the 1937 monument frost heaved and lying sideways. Using Kellys ties puts the corner on a stump - obviously poor measurements on his part or the monument was heaving at that time and he didn't bother to straighten and reset it. I found Brooks's tamarack NW. Rough measuring from from Brooks' stump I found a 4" dia. hole 1' SW of the stump and re-set the monument in that hole. I then re-marked two of Kellys BT's and marked two new BT's as shown below. I then re-marked and measured bearing trees as shown below.

Physical description of the monument set:

For the corner, I re-set the 1937 monument, a 4" iron pipe with brass cap, as described above.
Set a white vinyl sign post 1' north of the corner monument.

Describe the accessories used to perpetuate the corner. Include a plan view drawing and accessories found/set. Describe measuring point on bearing trees. Show any topographic



I, David E. Tlusty, Registered Land Surveyor, as Langlade County Surveyor, certify that the corner location on this record was determined by me and that this U.S. Public Land Survey Monument Record is correct to the best of my knowledge and belief.