

LANGLADE COUNTY U.S. PUBLIC LAND CORNER RESTORATION

The South Quarter corner of Section 9, T. 34 N., R. 10 E., Langlade County, WI.

Corner was: (check all that apply)

4341009 0020

- Restored through acceptance of an obliterated evidence location.
- Restored through acceptance of a found perpetuated location.
- Determined to be lost and re-established through proportionate methods
Show bearings and distances to PLSS corners used for proportioning, and show original distances).
- Restored/recovered/re-established in a location that differs from a previously established position
(Show difference in plan view below).
- Check here if addition information is shown on the reverse side of this form.

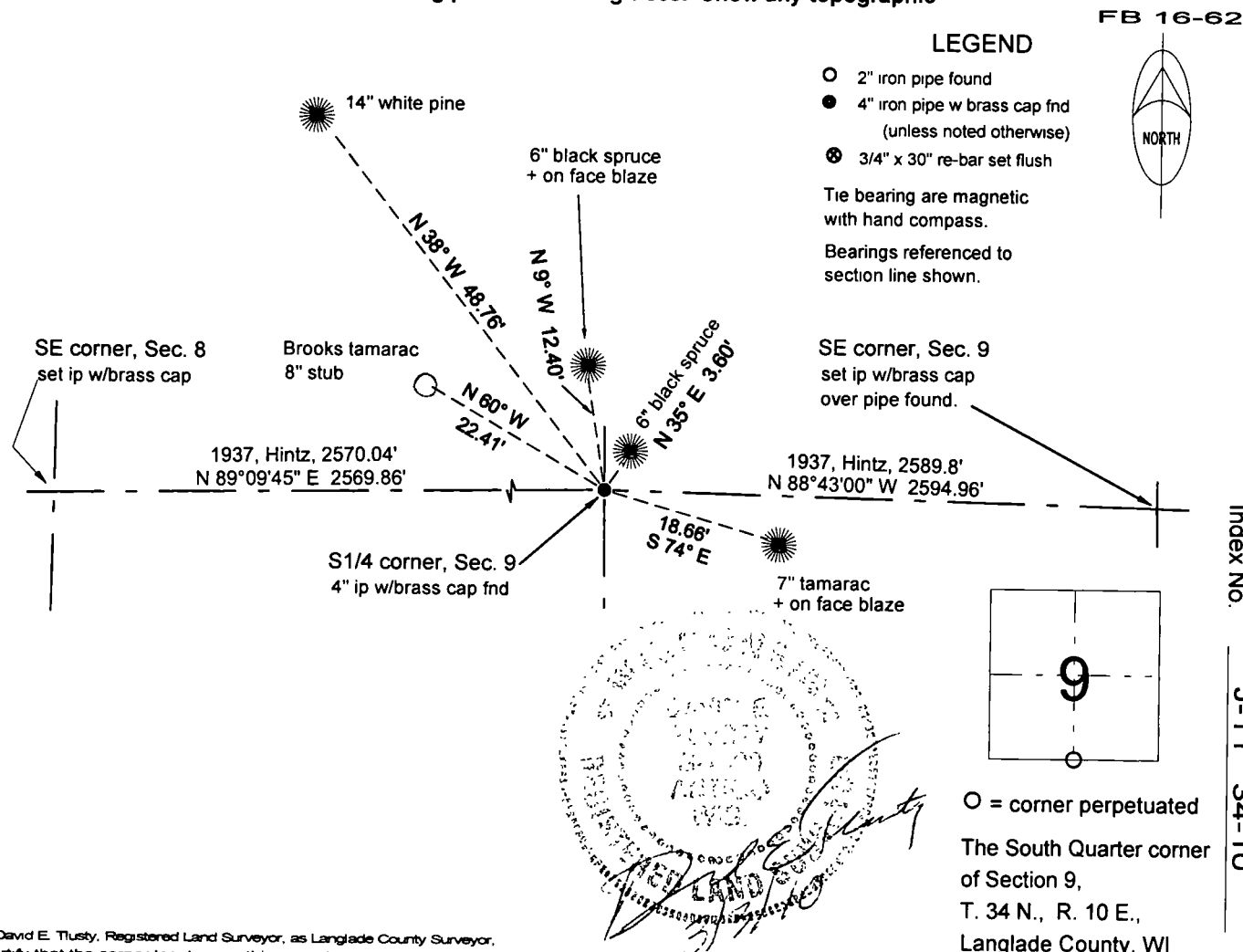
Describe record evidence, recovered physical evidence, occupational evidence, testimonial evidence and all other evidence considered in the recovery/restoration of the corner.

The original corner was established in 1865 by James L. Nowlin. Original bearing trees: tamarac, 4", S74°W, 11 links and a tamarac, 5", N50°E, 7 links. Brooks, date unknown, marked new BT's: tamarac, 8", N62°W, 34 links (22 4') and a tamarac, S44°W, 27.75 links. In the 1937 resurvey, Hintz said: "to 1/4 cor in fence line. Re'est. BT tam, 8", N62W, 34 lks and a tamarac, 8", S44°W, 27.75 links". In 1975, former surveyor Kelly found the 1937 monument and made new ties. On 10/21/98, D. Tlusty and D. Williams found the 1937 monument frost heaved and lying sideways. Using Kelly's ties puts the corner on a stump - obviously poor measurements on his part or the monument was heaving at that time and he didn't bother to straighten and reset it. I found Brooks's tamarack NW. Rough measuring from Brooks' stump I found a 4" dia. hole 1' SW of the stump and re-set the monument in that hole. I then re-marked two of Kelly's BT's and marked two new BT's as shown below. I then re-marked and measured bearing trees as shown below.

Physical description of the monument set:

For the corner, I re-set the 1937 monument, a 4" iron pipe with brass cap, as described above.
Set a white vinyl sign post 1' north of the corner monument.

Describe the accessories used to perpetuate the corner. Include a plan view drawing and accessories found/set. Describe measuring point on bearing trees. Show any topographic



I, David E. Tlusty, Registered Land Surveyor, as Langlade County Surveyor, certify that the corner location on this record was determined by me and that this U.S. Public Land Survey Monument Record is correct to the best of my knowledge and belief.

Index No. J-11 34-10

CERTIFIED LAND CORNER RESTORATION

Index No. J-11

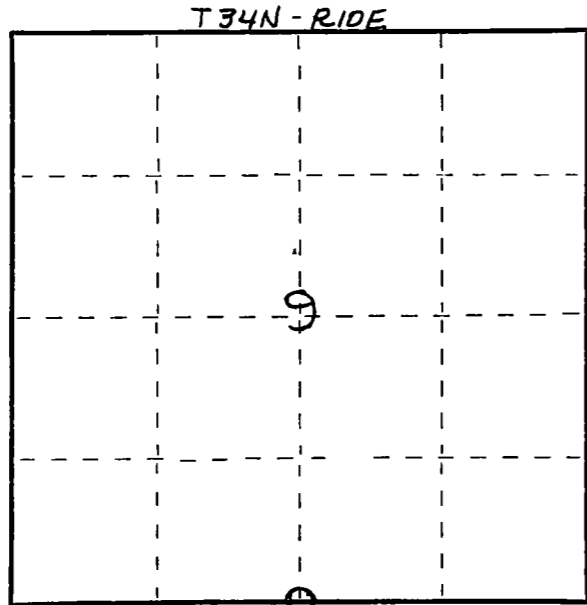
State of Wisconsin }
County of LANGLADE } ss.

I WILLIAM F. KELLY, do hereby certify that on the 8th day of APRIL, 19 75, I found evidence of the 1/4 SECTION corner of SECTIONS 9 & 16 Township 34, North, Range 10 EAST, Fourth Principal Meridian, as described hereon; and that from this evidence I established a new monument and accessories as described hereon to perpetuate the original location of this corner.

Resident witnesses:

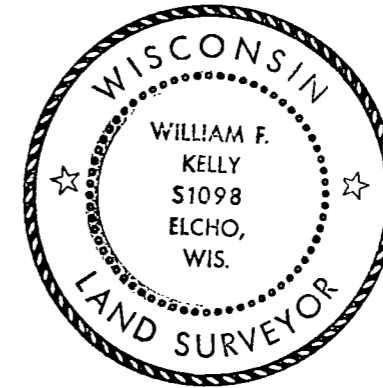
J. DREW

FORM 985 H C MILLER CO., MILWAUKEE



○ = Corner monument restored.

History of original corner establishment:



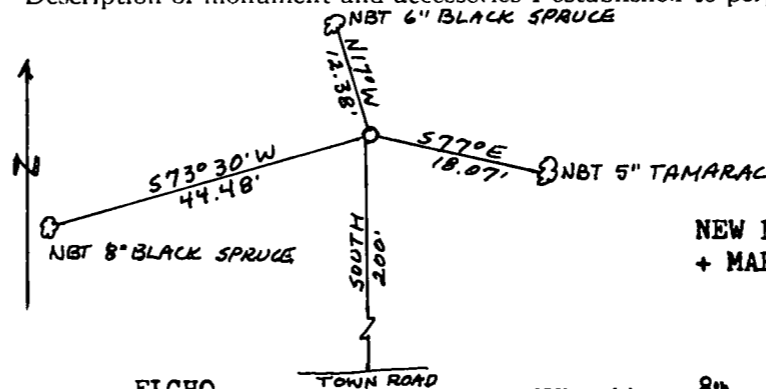
William F. Kelly

Description of corner evidence found:

4" BRASS CAP SET IN CONCRETE IN A 4" PIPE.

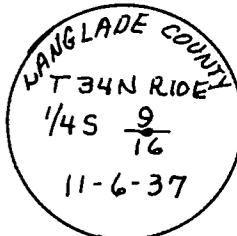
CORNER IS LOCATED IN A SPRUCE SWAMP APPROXIMATELY 200 FEET NORTH OF BASS LAKE ROAD.

Description of monument and accessories I established to perpetuate the original location of this corner.



**BRASS CAP MARKED:
CORNER WITNESSED
WITH NEW BEARING
TREES.**

**NEW BEARING TREES SCRIBED NBT ON TRUNK WITH
+ MARK AT BASE.**



Dated at ELCHO, Wis., this 8th day of APRIL, 1975

Signature William F. Kelly Title REGISTERED LAND SURVEYOR Registration No. S. 1098
(County Surveyor, Registered Land Surveyor, or other duly authorized official)

Office of Register of Deeds, County of _____, I hereby certify that the within instrument was filed in this office for record on the _____ day of _____, 19 _____ at _____ o'clock _____ M.

(Register of Deeds)

By _____ Deputy