

CERTIFIED LAND CORNER RESTORATION

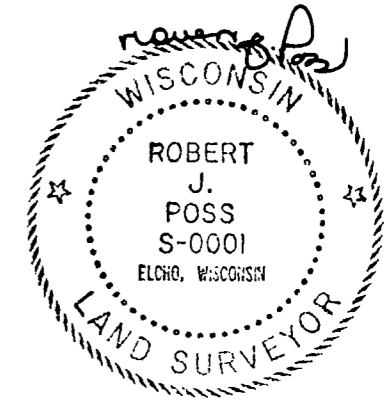
34-10

Index No. G-8

State of Wisconsin }
County of LANGLADE } ss.

History of original corner establishment:
NONE

I ROBERT J. POSS do hereby certify that on the 26TH day of MAY, 1970, I found evidence of the E 1/4 COR. ON E-W 1/4 LINE corner of SECTION 8 Township 34, North, Range 10E, Fourth, Principal Meridian, as described hereon; and that from this evidence I established a new monument and accessories as described hereon to perpetuate the original location of this corner.



Description of corner evidence found:

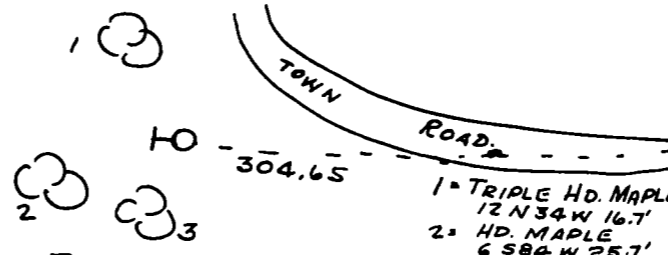
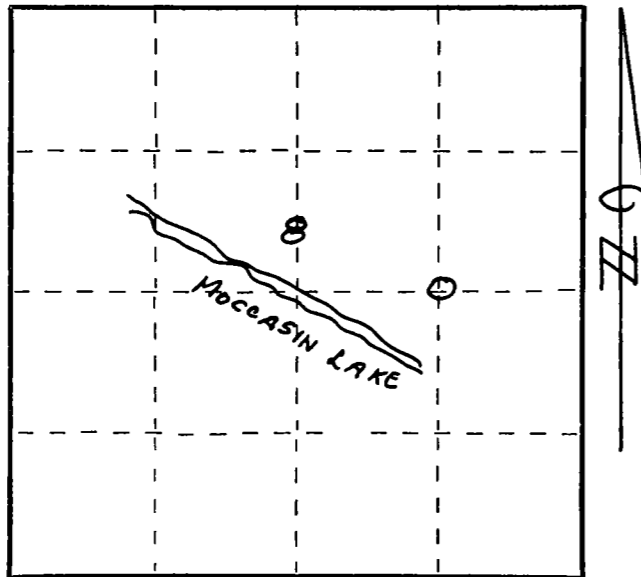
FOUND OLD "T" IRON AT APPROX 1/2 PT ACROSS 1/4 SECTION ACCORDING TO HUTCHINSON SURVEY.
DIST. = 45.89 CHS. POST IS 1512.25' WEST OF E 1/4 COR.

Resident witnesses:

.....
.....
.....

Description of monument and accessories I established to perpetuate the original location of this corner.

SET 1 1/4" PIPE PAINTED ORANGE ALONGSIDE MKD. E 1/6 POST
E-W 1/4 LINE
SEC. 8
T34N R10E.



NOTE ALL TREES IN POOR CONDITION NO GOOD TIMBER BLAZED TREES AT BASE & CHEST HIGH. SCRIBED NBT.

Dated at ELCHO, Wis., this 28TH day of MAY, 1970.

Signature Robert J. Poss Title REG. LAND SURVEYOR Registration No. S-0001
(County Surveyor, Registered Land Surveyor, or other duly authorized official)

Office of Register of Deeds, County of....., I hereby certify that the within instrument was filed in this office for record on the.....day of....., 19..... at.....o'clock..... M.

(Register of Deeds)

By.....Deputy

○ = Corner monument restored.