

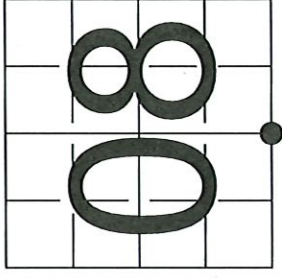
4341008 0020 2024

U. S. PUBLIC LAND SURVEY MONUMENT RECORD - ADDENDUM

NOTE: This form is intended and designed to fulfill all requirements of Wisconsin Administrative Code, Chapter A-E 7.08 U.S. Public Land Survey Monument Record (3) (a-i)

A-E 7.08(3)(a) Identity of corner:
South 1/4 Corner Section 08,
Township 34 North, Range 10 East
of the Fourth Principal Meridian,
Town of Eicho, Langlade County, Wisconsin

WISCRS - LANGLADE COUNTY
N: 449,770.348 USft (XXX,XXX.XXX)
E: 590,346.745 USft (XXX,XXX.XXX)
Datum: NAD83 (2011)
GNSS Method RTK
GNSS Control WISCORS VRS



The coordinate value shown has been verified by the average of two or more GPS observations at a markedly different time. Coordinates shown in parenthesis are previously published values.

A-E 7.08(3)(b)

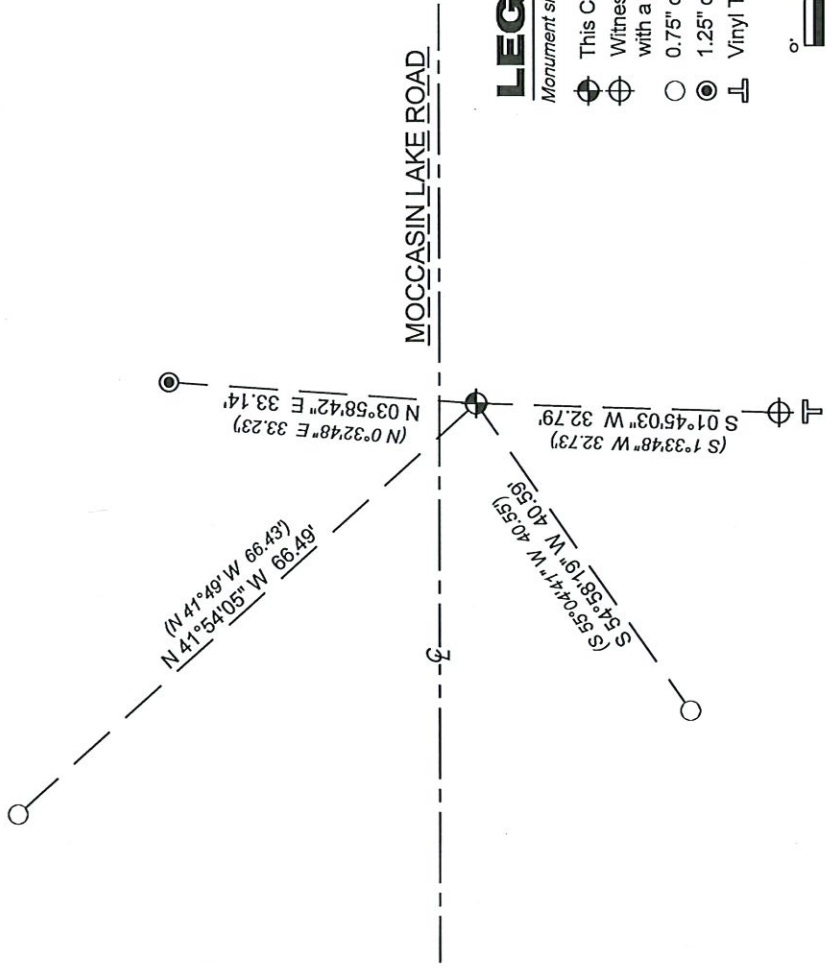
Original Surveyor: J.L. Nowlin - July 8, 1865 to July 20, 1865
Aspen 8 - S 70° W 5 Links, Birch 8 - N 60° E 35 Links

See previous Langlade County U.S. Public Land Corner Restoration - J-17 34-10 - September 19, 2007 - Surveyor 1390 - David E. Tlusty THENCE:

- May 7, 2014 - Surveyor 2663 - Darren B. Krzanowski - indicates this position as "4" brass cap fnd." on county record Map #10888.
April 5, 2024 - I found a mini - MAG Nail. The monument is ±4' south of the centerline of Moccasin Lake Road. I also found all of Tlusty's reference monuments as shown on the previous monument record.

I did not establish any new reference monuments.

A-E 7.08(3)(c)(d) Plan view of corner with references to at least 4 witness monuments.



Bearings listed to the nearest second are referenced to the:
Wisconsin County Coordinate Reference System,
Langlade County Zone.
All other bearings are magnetic.

LEGEND

Monument sizes = outside diameter measurements.

- ⊕ This Corner
- ⊕ Witness monument, 4" diameter iron pipe with a 4" diameter brass cap, found
- 0.75" diameter iron rod, found
- ⊙ 1.25" diameter iron pipe, found
- ⊥ Vinyl T-post, found ±1 foot south of witness.



A-E 7.08(3)(e) 1865 Surveyor set a post, 2007 Surveyor found an iron rod, 2014 Surveyor found a 4" brass cap. I found a mini - MAG Nail in 2024.

A-E 7.08(3)(f) I accept this monument in good faith as a FOUND PERPETUATED LOCATION of the corner.
A-E 7.08(3)(g)(h) This corner was not determined through lost-corner-proportionate methods.

A-E 7.08(3)(i) I, Jeffrey L. DeMuth, Professional Land Surveyor No. S-26566, hereby certify that the corner location on this record was determined by me or under my direction and control, and that this U.S. Public Land Survey Monument Record is correct and complete to the best of my knowledge, and belief.

April 08, 2024

DATE

SIGNATURE



43410080020

J7 34-10

LANGLADE COUNTY U.S. PUBLIC LAND CORNER RESTORATION

The South Quarter corner of Section 8, T. 34 N., R. 10 E., Langlade County, WI.

Corner was: (check all that apply)

4341008 0020

- Restored through acceptance of an obliterated evidence location.
- Restored through acceptance of a found perpetuated location.
- Determined to be lost and re-established through proportionate methods.
- Show bearings and distances to PLSS corners used for proportioning, and show original distances).
- Restored/recovered/re-established in a location that differs from a previously established position.
- (Show difference in plan view below).
- Check here if addition information is shown on the reverse side of this form.

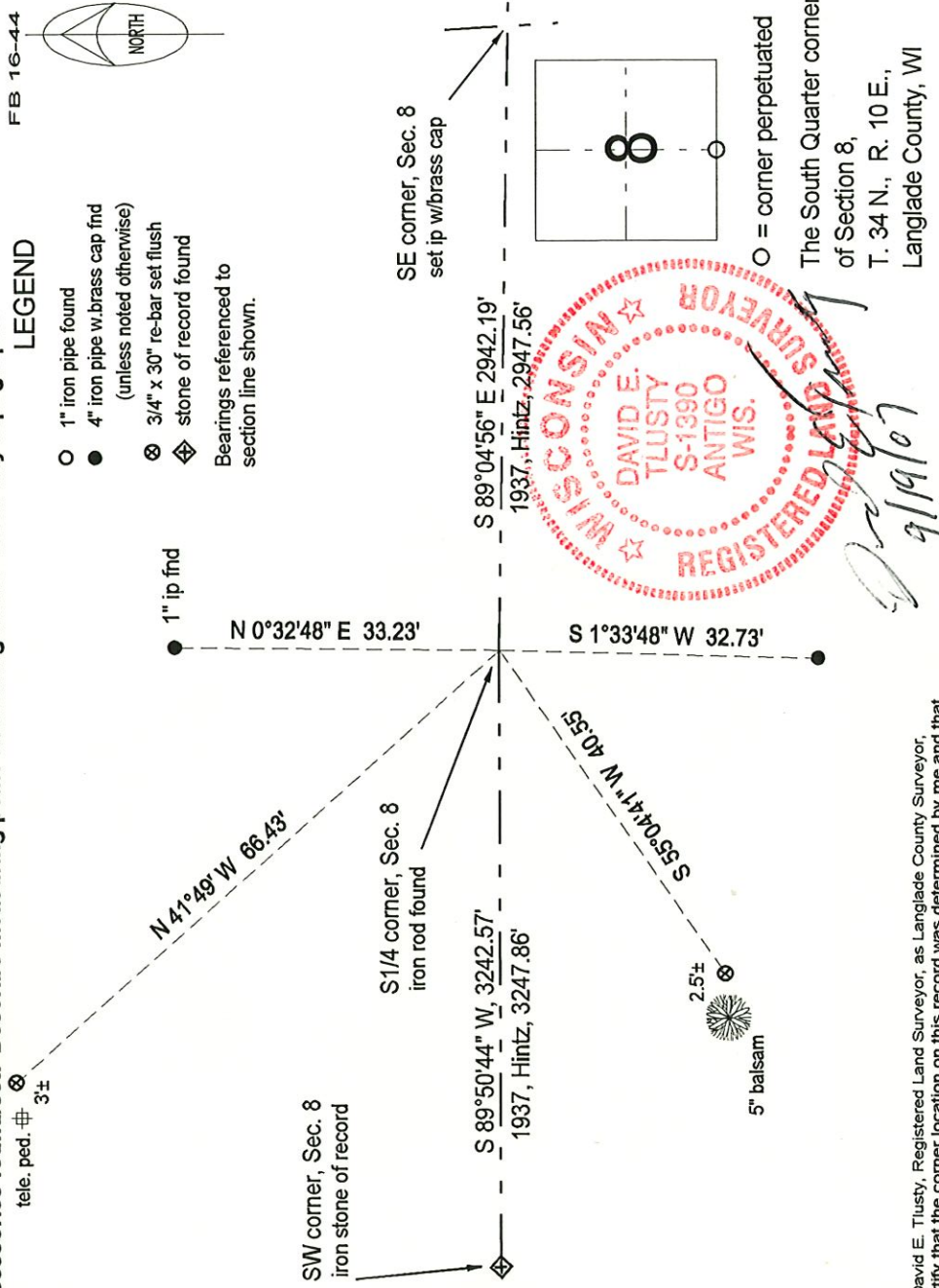
Describe record evidence, recovered physical evidence, occupational evidence, testimonial evidence and all other evidence considered in the recovery/restoration of the corner.

The original corner was established in 1865 by James L. Nowlin. Original bearing trees: Aspen, 8", S70°W, 5 lks. and a birch, 8", N60°E, 35 lks. In Dec. 1904, B. F. Dorr said: south 1/4 post, northeast BT standing, new BT: spruce, 6", S17°W, 50-1/4 lks. In June 1916, Brooks used this corner but didn't describe it. At a date unknown, C. Baker surveyed the south line of Sec 8 (total 93.6325 ch) but didn't describe this corner. In 1930, J.J. Melendy measured 40.725 ch south, from the center of Sec 8 to this corner, but didn't describe it. In 1937, D.A. Hintz measured from SE corner of Section 8, 44.66 chains to this 1/4 corner. He described this corner as: found BO by Hutchinson, stone, N45°E, 41 lks. Iron pin for corner and witness corner 50 lks. south. In June 1978, former surveyor Kelly found a 3/4" iron rod in center of road and a witness corner. The iron rod was protruding through road surface and witness corner has been frost heaved out of position; also a RR spike was found "close to the actual corner location". He reset the iron rod below road surface and straightened and made solid the witness corner and made 3 new BT's. In 1995, Tom Arnott found bent iron pipe in road. He replaced it with 3/4" rebar and added new ties. 06/17/98 D. Tlusty D. Williams found rebar in road, replaced it with the monument described below. Measured ties as shown below.

Physical description of the monument set:

For the corner, I replaced the found rebar with a 1 1/4" x 30" iron pipe with 4" brass cap.

Describe the accessories used to perpetuate the corner. Include a plan view drawing and accessories found/set. Describe measuring point on bearing trees. Show any topographic



I, David E. Tlusty, Registered Land Surveyor, as Langlade County Surveyor, certify that the corner location on this record was determined by me and that this U.S. Public Land Survey Monument Record is correct to the best of my knowledge and belief.

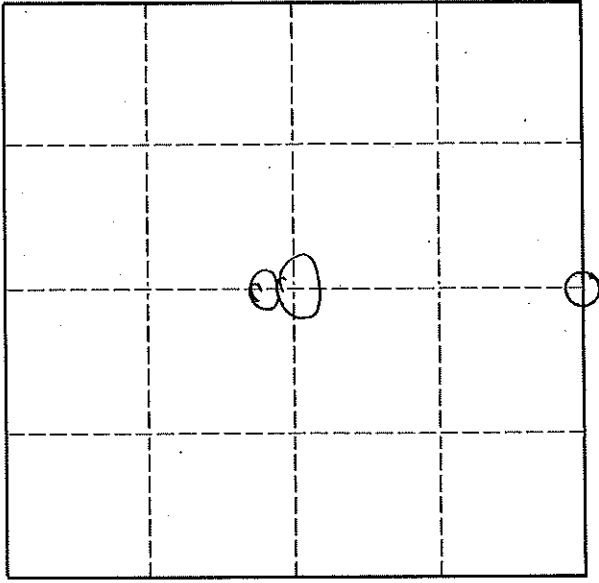
U. S. PUBLIC LAND SURVEY MONUMENT RECORD

INSTRUCTIONS:

This record shall show the location of the corner and shall include all of the following nine elements (a through i).

- (a) Identify the corner by reference to the U.S. public land survey system.
 O = Corner monument restored.

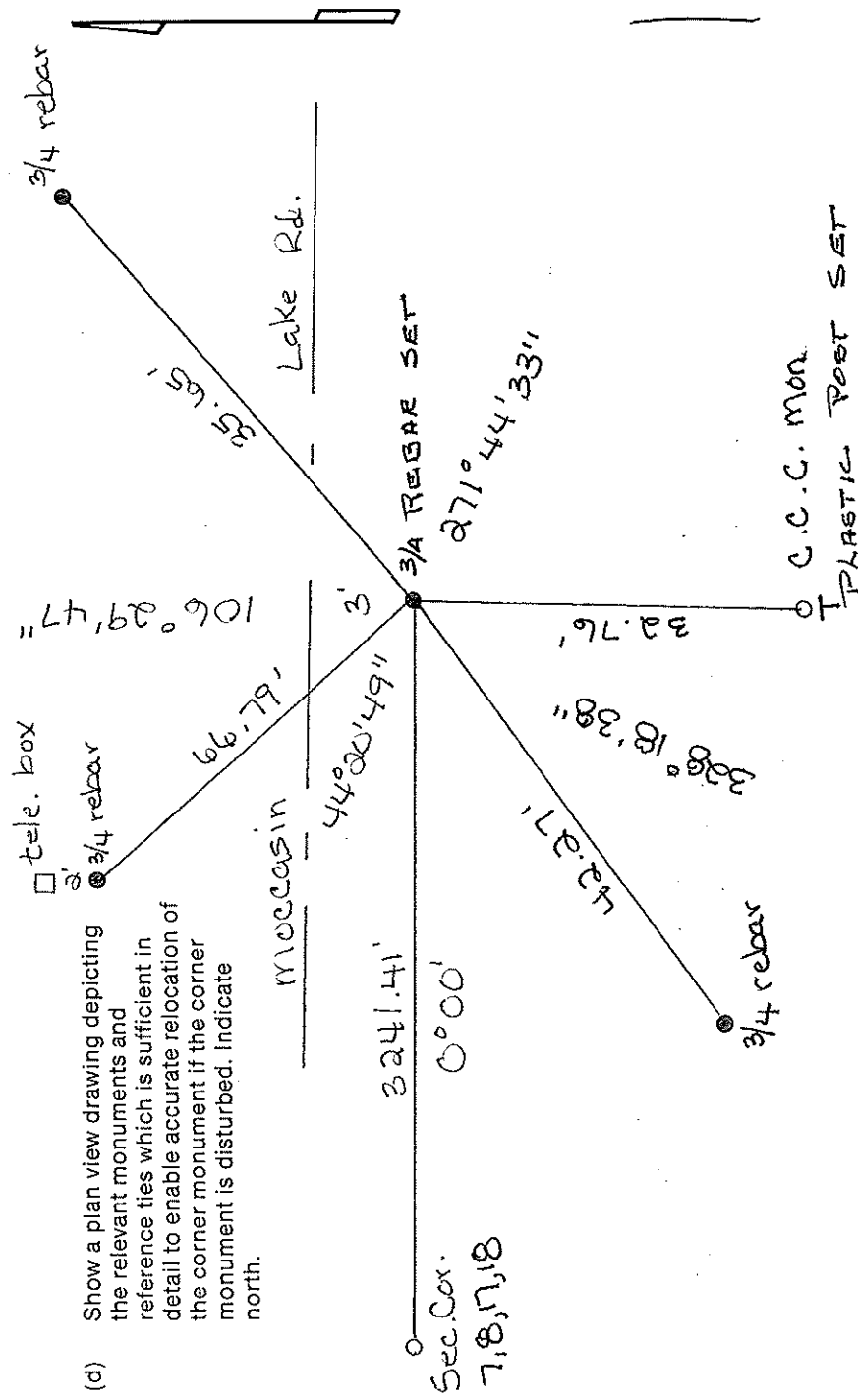
$\frac{1}{2}$ COR. 8, 17
 T34N, R10E



- (b) Describe any record evidence, monument evidence, occupational evidence, testimonial evidence or any other material evidence you considered, and whether the monument was found or placed.

Found iron pipe in road bent. Replaced with 3/4 rebar with red cap. Also found C.C.C. monument to south of road. Kelly's ties were to w. birch and they are dead or gone.

- (c) In the plan view drawing below, provide reference ties to at least 4 witness monuments, or, if the location is within a municipality, to at least 2 witness monuments. (Witness monuments shall be made of concrete, natural stone, iron or other equally durable material.)
 Describe witness monuments.



Describe any material discrepancy between the location of the corner as restored or reestablished and the location of that corner as previously restored or reestablished by distance and direction. Show the discrepancy on the plan view drawing under (d), above. Show the distances between the corner as previously restored or reestablished and (1) the corner as restored or reestablished, and (2) to at least 2 of the witness monuments shown on the drawing in (d), above.

N/A

(f) Was the corner restored through acceptance of (1) an obliterated evidence location, or, (2) a found perpetuated location.?

2

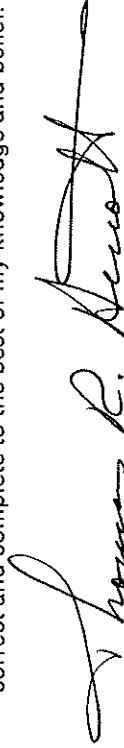
(g & h) Was the corner reestablished through lost corner proportionate methods? If so, show the method, including the directions and distances to other public land survey corners used as evidence or used for proportioning in determining the corner location.

NO

(i) I, Thomas R. Arnott S-887

(type or print name)

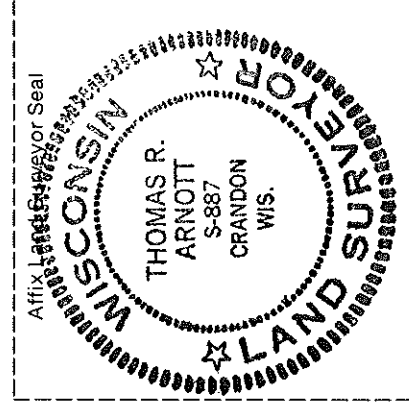
certify that the corner location shown on this record was determined by me or under my direction and control and that this U.S. Public Land Survey Monument Record is correct and complete to the best of my knowledge and belief.



Signature

27 Dec 95

Date



CERTIFIED LAND CORNER RESTORATION

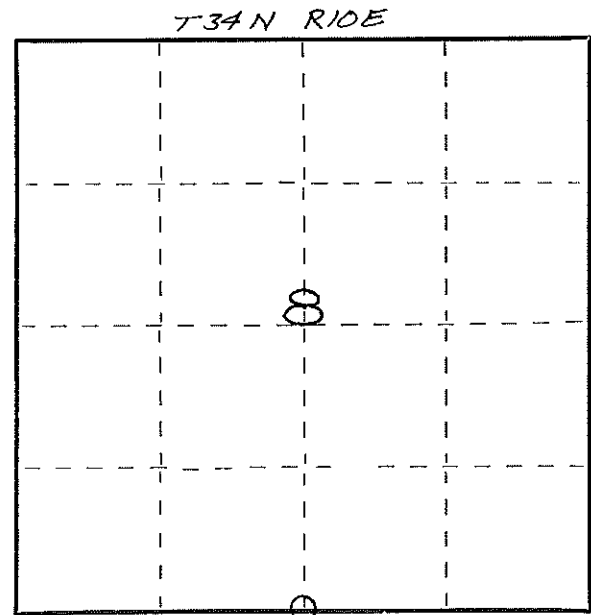
Index No. J-7

State of Wisconsin }
County of LANGLADE } ss.

I WILLIAM F. KELLY, do hereby certify that on the 28TH day of JUNE, 1978, I found evidence of the SOUTH 1/4 corner of SECTION 8 Township 3A, North, Range 10E, Fourth Principal Meridian, as described hereon; and that from this evidence I established a new monument and accessories as described hereon to perpetuate the original location of this corner.

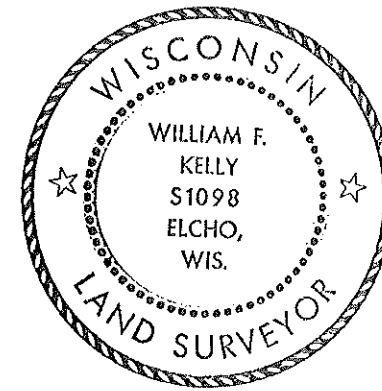
Resident witnesses:

.....
.....
.....



○ = Corner monument restored.

History of original corner establishment:

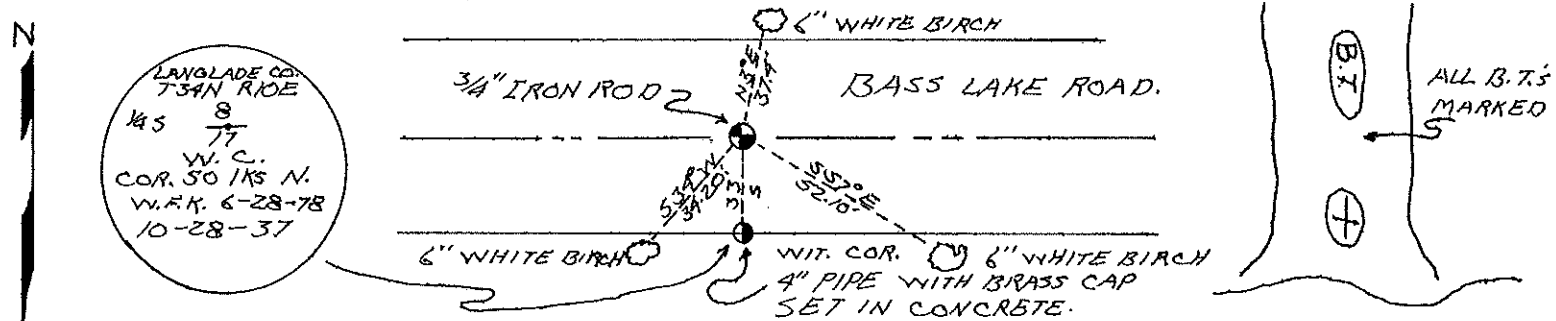


Description of corner evidence found:
FOUND 3/4" IRON ROD IN CENTER OF ROAD & ONE WITNESS CORNER. IRON ROD WAS PROTRUDING THRU ROAD SURFACE & WITNESS CORNER HAD BEEN FROST HEAVED OUT OF POSITION.

NOTE:

THERE IS A R.R. SPIKE IN THE ROAD THAT IS CLOSE TO THE ACTUAL CORNER. THE 3/4" ROD IS THE ACTUAL CORNER LOCATION.

Description of monument and accessories I established to perpetuate the original location of this corner.
RESET IRON ROD BELOW SURFACE OF ROADWAY & RESET WITNESS CORNER. MARKED NEW BEARING TREES.



Dated at ELCHO, Wis., this 16th day of SEPTEMBER, 1978.

Signature William F. Kelly Title County Surveyor Registration No. S 1098
(County Surveyor, Registered Land Surveyor, or other duly authorized official)

Office of Register of Deeds, County of....., I hereby certify that the within instrument was filed in this office for record on the.....day of....., 19..... at.....o'clock..... M.

.....
(Register of Deeds)

By..... Deputy

FORM 985 N. C. MILLER CO., MILWAUKEE