

CERTIFIED LAND CORNER RESTORATION

34-10
Index No. J-8

State of Wisconsin }
County of Langlade } ss.

I Raymond J. Hallisy, do hereby certify that on the 11th day of June, 1968, I found evidence of the E 1/16 corner of Section 17 Township 34, North, Range 10, Fourth, Principal Meridian, as described hereon; and that from this evidence I established a new monument and accessories as described hereon to perpetuate the original location of this corner.

History of original corner establishment:

Corner set in the 1930's by: C. W. Borth
E. F. Kowalke
D. A. Hintz

Description of corner evidence found:

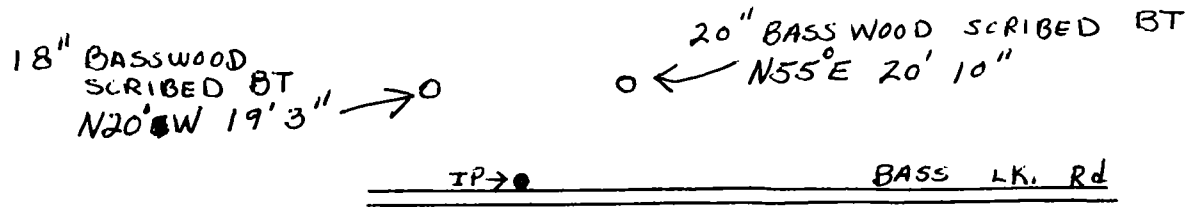
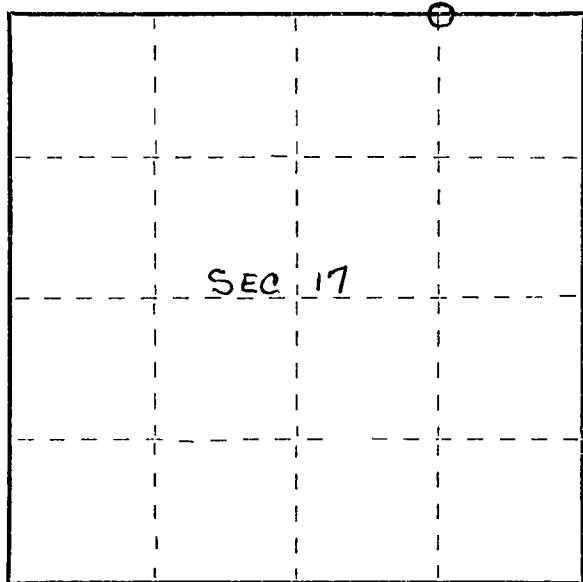
Found squared stake standing, rock mound
Marked E 1/16 8 17 Cor 20 LKS S.

Resident witnesses:

.....
.....
.....

Description of monument and accessories I established to perpetuate the original location of this corner.

Set Std. 1 1/2" pipe with cap marked W.C. C. 20 LKS. S. E 1/16
Rock mound, BT's to witness corner.



Dated at Antigo, Wis., this 11th day of June, 1968

Signature Raymond J. Hallisy Reg. Land Surveyor Registration No. L-685
County Surveyor, Registered Land Surveyor, or other duly authorized official

Office of Register of Deeds, County of _____, I hereby certify that the within instrument was filed in this office for record on the _____ day of _____, 19____ at _____ o'clock _____ M.

.....
(Register of Deeds)

By..... Deputy

○ = Corner monument restored.

FORM 985 H. C. MILLER CO., MILWAUKEE