

LANGLADE COUNTY U.S. PUBLIC LAND CORNER RESTORATION

The witness corner to the Northeast corner of Section 7, T. 34 N., R. 10 E., Langlade County, WI.

Corner was: (check all that apply)

4341007 3800

- Restored through acceptance of an obliterated evidence location.
- Restored through acceptance of a found perpetuated location.
- Determined to be lost and re-established through proportionate methods.
Show bearings and distances to PLSS corners used for proportioning, and show original distances).
- Restored/recovered/re-established in a location that differs from a previously established position.
(Show difference in plan view below).
- Check here if addition information is shown on the reverse side of this form.

Describe record evidence, recovered physical evidence, occupational evidence, testimonial evidence and all other evidence considered in the recovery/restoration of the corner.

The original corner was established in 1865 by James L. Nowlin. Original bearing trees: tamarac, 4", S25°E, 15 lks., and a tamarac, 5", S65°W, 30 lks. In 1904, Dorr measured north for the 1/4 post 37.88 chains and found both original bearing stumps. He marked a new BT: spruce, 4", S10-1/2°E, 20 lks. (13.2'). Hutchinson, date unknown, surveyed in Section 8 and measured from Dorr's 1/8 corner, north to WC and then 2.00 ch north to section corner. In 1937, D.A. Hintz measured north from the 1/4 corner, 37.81 chains - original dist. was 38.00 chains and Dorr had 37.88 chains. Hintz described this corner as: To witness corner, fence along last 1/2 mile. Dorr's BT spruce, 7", S13-1/2°E, 20 lks. He marked a new BT: spruce, 6", S61°W, 32 lks. April 21, 1998, D. Tlusty and D. Williams found a 4" iron pipe with brass cap 6" below water at north end of fence. Found Dorr's stump with scribing visible at S 8°E, 14.0'. And found the 1937 SW spruce as shown below. Accepted the monument found as the best evidence of the original corner location.

Physical description of the monument set:

For the corner, I left the existing monument in place.
Set white vinyl sign post 0.7' east of the monument.

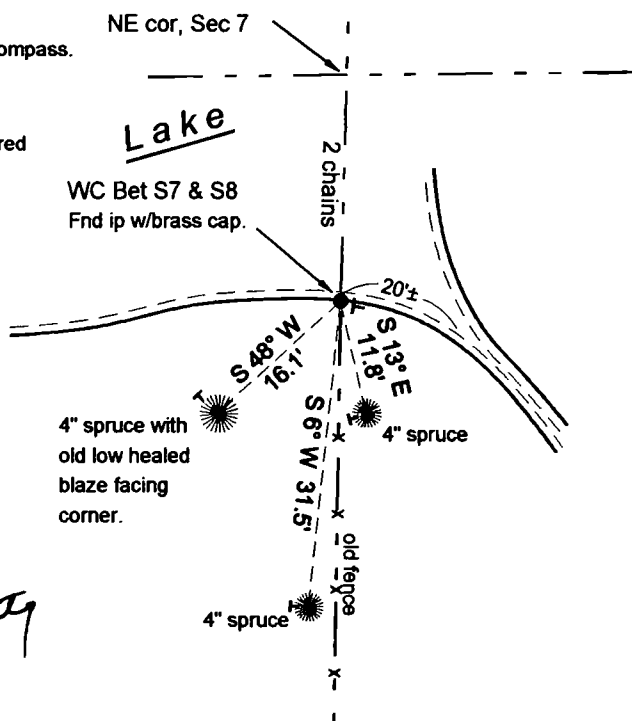
Describe the accessories used to perpetuate the corner. Include a plan view drawing and accessories found/set. Describe measuring point on bearing trees. Show any topographic

LEGEND

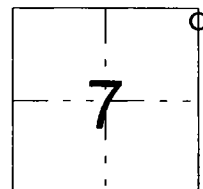
- 2" iron pipe found
- 4" iron pipe w. brass cap fnd (unless noted otherwise)
- ⊕ 3/4" x 30" re-bar set flush
- T white vinyl sign post set

Bearings magnetic with hand compass.

Trees are blazed, painted blue and have "Bearing Tree" signs attached. Tree ties are measured to an aluminum nail in a low blaze on the side of the tree shown as: >



FB 18-25



○ = corner perpetuated
The witness corner to the Northeast corner of Section 7, T 34 N., R. 10 E., Langlade County, WI

Index No. E-F 5 34-10

10/22/07

I, David E. Tlusty, Registered Land Surveyor, as Langlade County Surveyor, certify that the corner location on this record was determined by me and that this U.S. Public Land Survey Monument Record is correct to the best of my knowledge and belief.