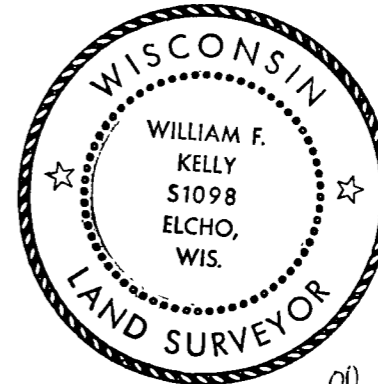


CERTIFIED LAND CORNER RESTORATION

Index No. H-2

State of Wisconsin }  
County of LANGLADE } ss.

History of original corner establishment:  
**CORNER SET ON SURVEY IN THE 1930's.**



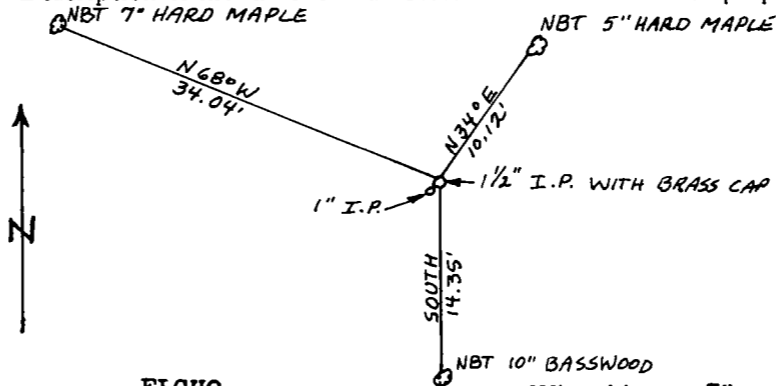
*William F. Kelly*

I WILLIAM F. KELLY, do hereby certify that on the 5<sup>th</sup> day of APRIL, 1975, I found evidence of the SW 1/4 corner of SECTION 7 Township 34, North, Range 10 E, Fourth Principal Meridian, as described hereon; and that from this evidence I established a new monument and accessories as described hereon to perpetuate the original location of this corner.

Description of corner evidence found:  
**FOUND SQUARED CEDAR POST AND 1" IRON PIPE. CEDAR POST IN POOR CONDITION.**

Resident witnesses:  
JOHN DREW  
DONALD KELLY

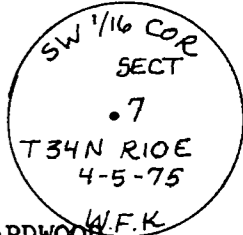
Description of monument and accessories I established to perpetuate the original location of this corner.



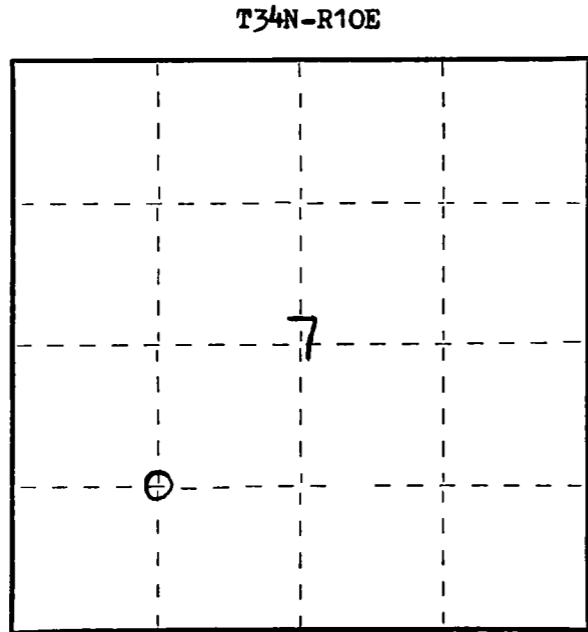
REPLACED ROTTED CEDAR POST WITH 1 1/2" BLACK IRON PIPE WITH BRASS CAP.

BRASS CAP MARKED:

NOTE: CORNER LOCATED IN A HARDWOOD STAND ON HIGH GROUND. TREES BLAZED NBT ON TRUNK AND MARKED WITH A + AT BASE.



FORM 985 R. C. MILLER CO., MILWAUKEE



○ = Corner monument restored.

Dated at ELCHO, Wis., this 5<sup>th</sup> day of APRIL, 1975.

Signature William F. Kelly Title REGISTERED LAND SURVEYOR Registration No. S 1098  
(County Surveyor, Registered Land Surveyor, or other duly authorized official)

Office of Register of Deeds, County of \_\_\_\_\_, I hereby certify that the within instrument was filed in this office for record on the \_\_\_\_\_ day of \_\_\_\_\_, 19\_\_\_\_ at \_\_\_\_\_ o'clock \_\_\_\_\_ M.

(Register of Deeds)

By \_\_\_\_\_ Deputy