

CERTIFIED LAND CORNER RESTORATION

Index No. H-5

State of Wisconsin }  
County of LANGLADE } ss.

I WILLIAM F. KELLY, do hereby certify that on the 8<sup>th</sup> day of APRIL, 1975, I found evidence of the 1/8 SECTION corner of SECTION 7 & 8 Township 34, North, Range 10 EAST, Fourth Principal Meridian, as described hereon; and that from this evidence I established a new monument and accessories as described hereon to perpetuate the original location of this corner.

Resident witnesses:

J. DREW

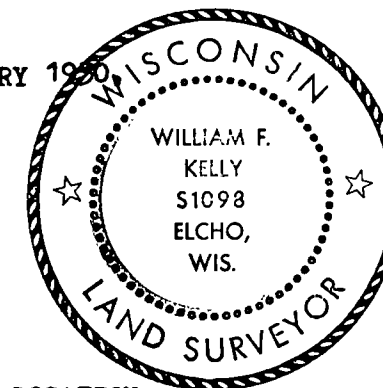
D. KELLY

History of original corner establishment:

POST SET BY DORR AND REFERRED TO IN M. HUTCHINSONS NOTES OF JANUARY 1950

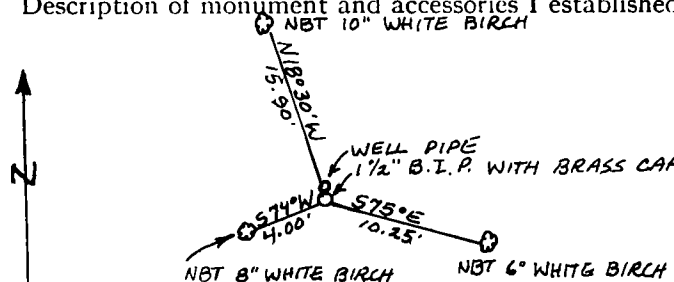
Description of corner evidence found:

FOUND OLD SCRIBED CEDAR POST ROTTED OFF AND A WELL PIPE AT CORNER LOCATION.



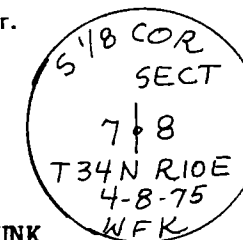
*William F. Kelly*

Description of monument and accessories I established to perpetuate the original location of this corner.

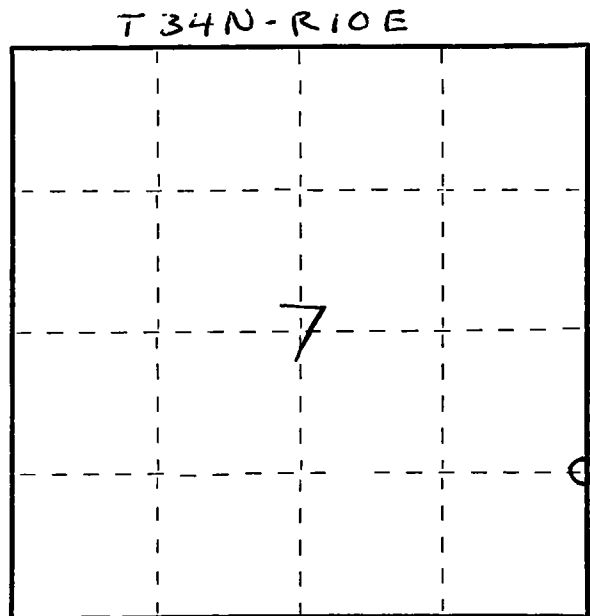


SET 1 1/2" BLACK IRON PIPE WITH BRASS CAP MARKED:  
WELL PIPE SET NEXT TO BRASS CAP AS A WITNESS.

NEW BEARING TREES SCRIBED NBT ON TRUNK AND MARKED WITH A + AT BASE.



FORM 985 H. C. MILLER CO., MILWAUKEE



○ = Corner monument restored.

Dated at ELCHO, Wis., this 8<sup>th</sup> day of APRIL, 1975

Signature William F. Kelly Title REGISTERED LAND SURVEYOR Registration No. S 1098  
(County Surveyor, Registered Land Surveyor, or other duly authorized official)

Office of Register of Deeds, County of \_\_\_\_\_, I hereby certify that the within instrument was filed in this office for record on the \_\_\_\_\_ day of \_\_\_\_\_, 19\_\_\_\_ at \_\_\_\_\_ o'clock \_\_\_\_\_ M.

(Register of Deeds)

By \_\_\_\_\_ Deputy