

LANGLADE COUNTY U.S. PUBLIC LAND CORNER RESTORATION

The Southeast corner of Section 7, T. 34 N., R. 10 E., Langlade County, WI.

4341007 0000

Corner was: (check all that apply)

- Restored through acceptance of an obliterated evidence location.
- Restored through acceptance of a found perpetuated location.
- Determined to be lost and re-established through proportionate methods.
Show bearings and distances to PLSS corners used for proportioning, and show original distances).
- Restored/recovered/re-established in a location that differs from a previously established position.
(Show difference in plan view below).
- Check here if addition information is shown on the reverse side of this form.

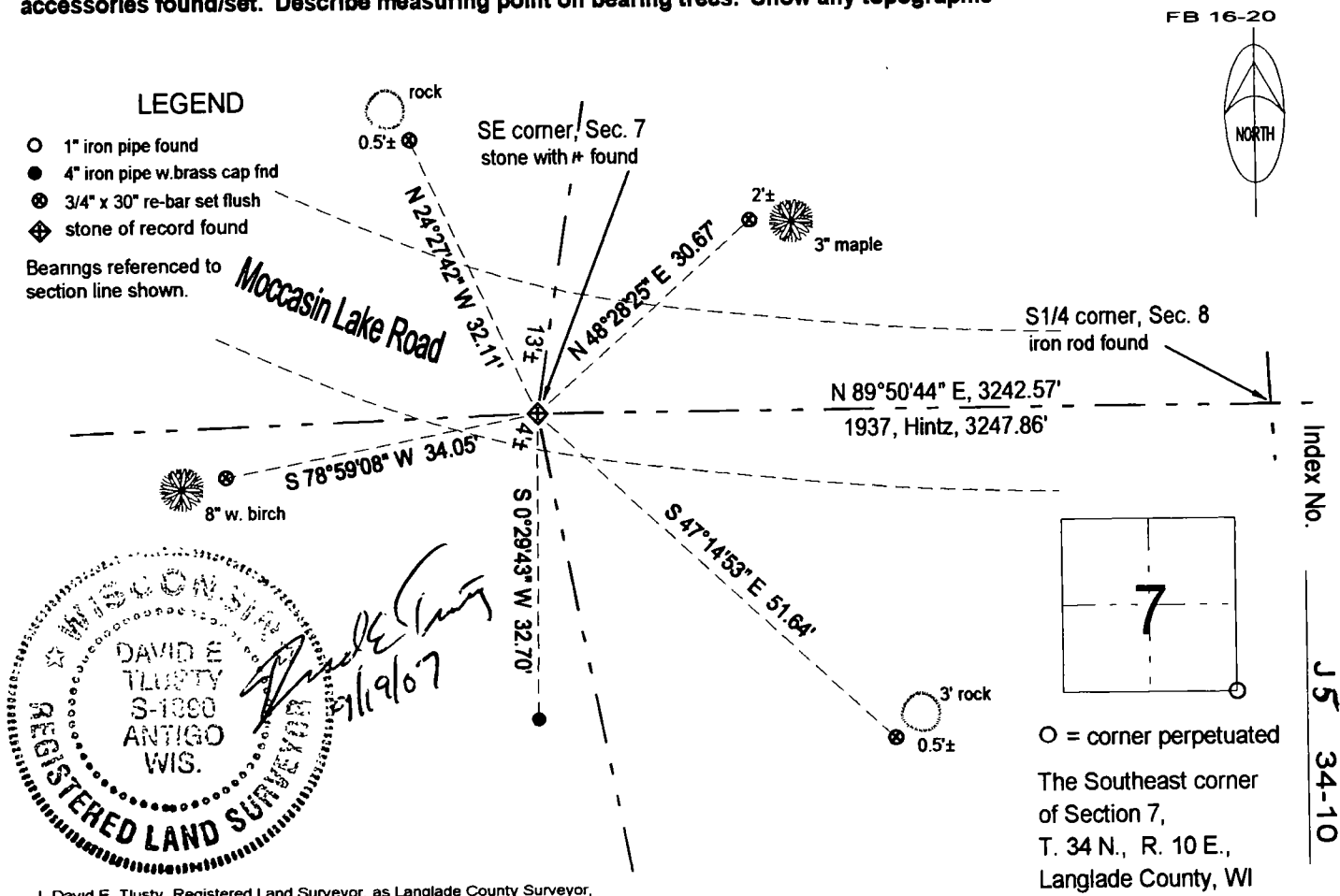
Describe record evidence, recovered physical evidence, occupational evidence, testimonial evidence and all other evidence considered in the recovery/restoration of the corner.

The original corner was established in 1865 by James L. Nowlin. Original bearing trees: sugar, 8", N20°E, 13 lks. and a hemlock, 7", N52°W, 40 lks. In Dec. 1904 Dorr said: northeast tree standing, new BT, cedar 10", N52°W, 38-1/2 lks. In June 1916, Brooks said: stake and BT by Dorr, hemlock 14", S62-1/2°E, 43-1/2 lks., this cor. is about 36 rods west of where it should be but the trees at this one correspond with notes. others do not. Also measured from east from 1/4, 49.15 chains, 21-1/4 lks., south of section corner iron pipe. In 1937, Hintz desc. this corner as: To section corner in east-west road of 7-8-17-18. This corner re-established by Dorr, his corner gone but re-established again by Brooks, his old hemlock, 14", S 62-1/2°E, 43-1/2 lks. still there. Put stone in road and set a witness corner (4" iron pipe with brass cap) south 50 lks. In June 1978, former surveyor Kelly found 4" brass cap set in concrete in a pipe, corner 50 lks., north, set 1" iron pipe for corner below road surface. December 1995, Tom Amott found 1" iron pipe in road, 1937 witness corner to south, and BT to NW and measured to S 1/4 cor. Sec. 8, 3241.41'. April 21, 1998, D. Tlusty, D. Williams found iron pipe with 4" BC marked as witness corner, corner is 50 lks., north. We dug in the road, 33' north of witness corner. Found Amott's iron pipe bent ESE. We continued to dig and found the stone set by Hintz, 1.3' WNW of Amotts iron pipe. The stone is 5" x 5" with a clear + chiseled on top and 0.35' below gravel road surface. I accepted stone found as best evidence of the perpetuated corner location. Pulled Amott pipe and set 1' x 30" iron pipe 0.3' north of center of stone's X. Also found rotten 1937 hemlock stump hole at S58°E 28.7'.

Physical description of the monument set:

For the corner, I left the existing stone in place and set a 1" x 30" iron pipe on the north edge of it. We put a white vinyl post by witness monument south.

Describe the accessories used to perpetuate the corner. Include a plan view drawing and accessories found/set. Describe measuring point on bearing trees. Show any topographic



I, David E. Tlusty, Registered Land Surveyor, as Langlade County Surveyor, certify that the corner location on this record was determined by me and that this U.S. Public Land Survey Monument Record is correct to the best of my knowledge and belief.

Index No. J5 34-10

U. S. PUBLIC LAND SURVEY MONUMENT RECORD

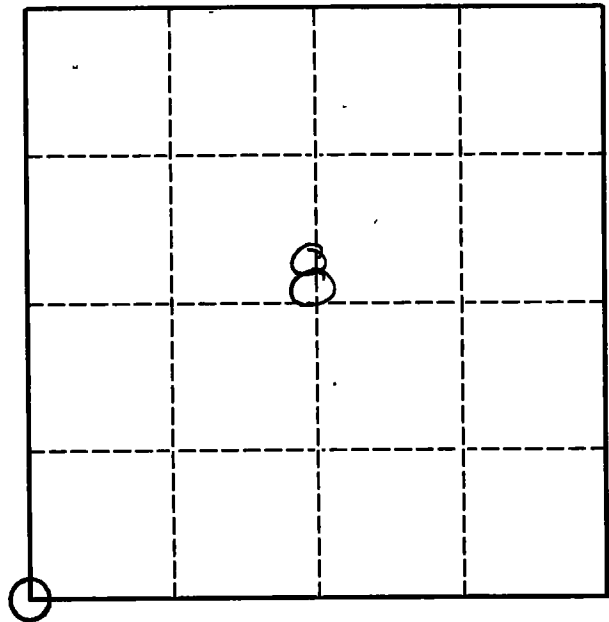
INSTRUCTIONS:

This record shall show the location of the corner and shall include all of the following nine elements (a through i).

- (a) Identify the corner by reference to the U.S. public land survey system.

O = Corner monument restored

Sec. Cor 7, 8, 17, 18
T34N, R10E



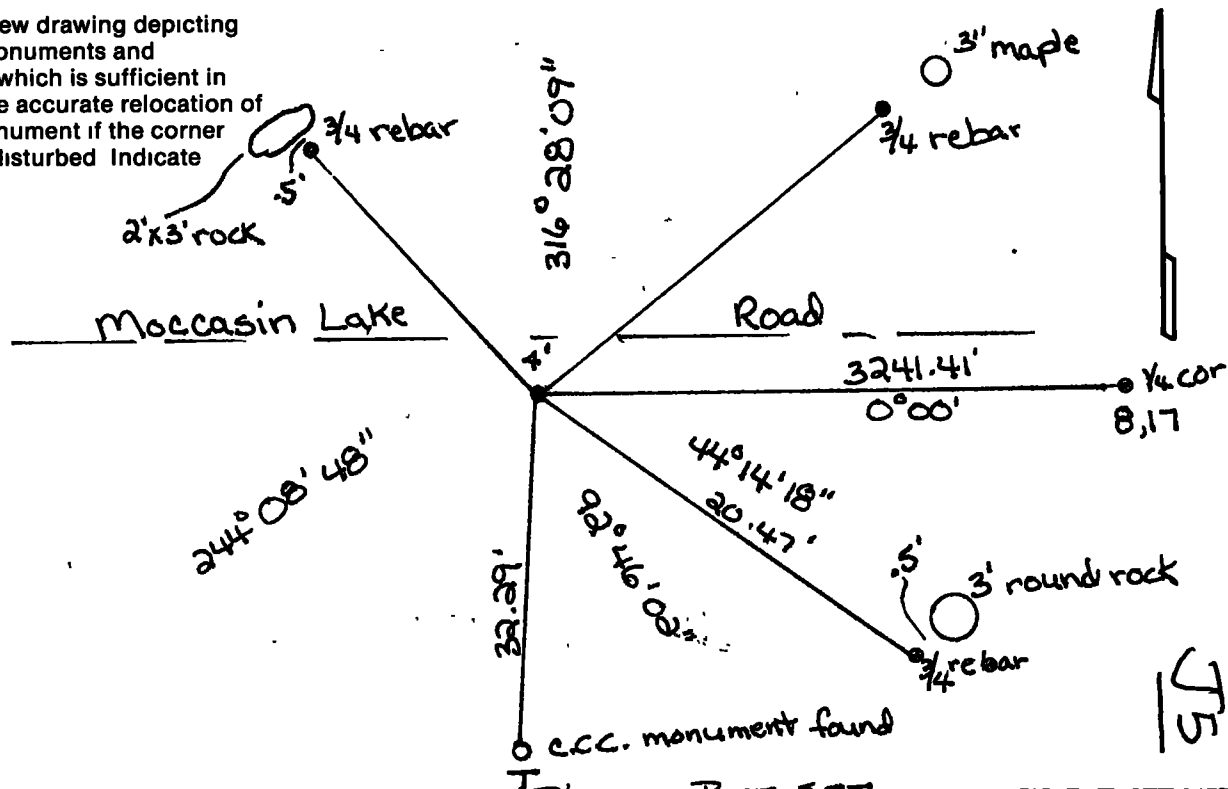
- (b) Describe any record evidence, monument evidence, occupational evidence, testimonial evidence or any other material evidence you considered, and whether the monument was found or placed

Found iron pipe in gravel road and a C.C.C. monument to the south of the road. Also found BT to the northwest of corner.

*TRUSTY FND
STONE
SEE NEW TIES*

- (c) In the plan view drawing below, provide reference ties to at least 4 witness monuments, or, if the location is within a municipality, to at least 2 witness monuments. (Witness monuments shall be made of concrete, natural stone, iron or other equally durable material.) Describe witness monuments.

- (d) Show a plan view drawing depicting the relevant monuments and reference ties which is sufficient in detail to enable accurate relocation of the corner monument if the corner monument is disturbed. Indicate north



Describe any material discrepancy between the location of the corner as restored or reestablished and the location of that corner as previously restored or reestablished by distance and direction. Show the discrepancy on the plan view drawing under (d), above. Show the distances between the corner as previously restored or reestablished and (1) the corner as restored or reestablished, and (2) to at least 2 of the witness monuments shown on the drawing in (d), above.

N/A

(f) Was the corner restored through acceptance of (1) an obliterated evidence location, or, (2) a found perpetuated location.?

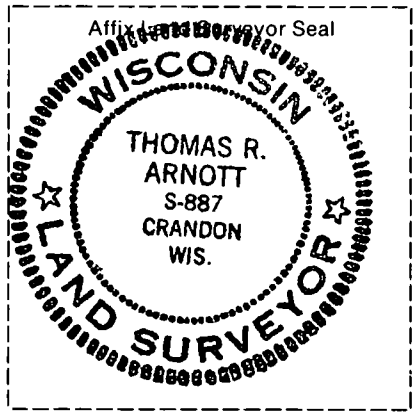
2

(g & h) Was the corner reestablished through lost corner proportionate methods? If so, show the method, including the directions and distances to other public land survey corners used as evidence or used for proportioning in determining the corner location.

NO

(i) I, Thomas R. Arnott S-887
(type or print name)

certify that the corner location shown on this record was determined by me or under my direction and control and that this U.S. Public Land Survey Monument Record is correct and complete to the best of my knowledge and belief.



Thomas R. Arnott
Signature Date 27 Dec 95

CERTIFIED LAND CORNER RESTORATION

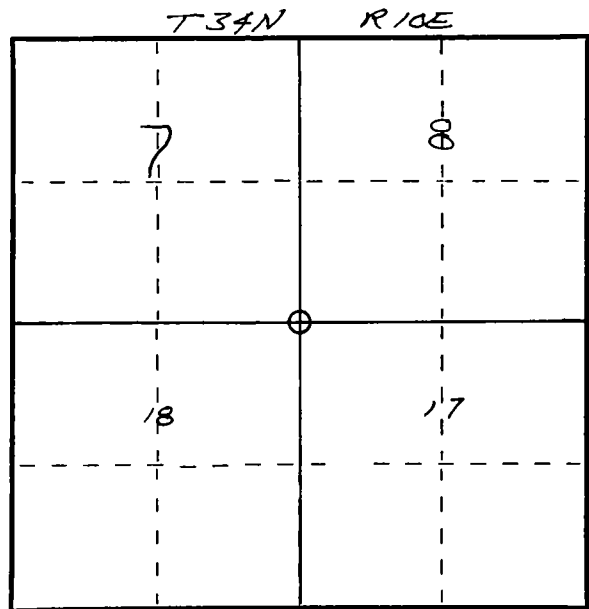
Index No. J-5

State of Wisconsin }
 County of LANGLADE } ss.

I WILLIAM F. KELLY, do hereby certify that on the 29 day of JUNE, 1978, I found evidence of the SOUTH-EAST corner of SECTION 7 Township 34, North, Range 10 E, Fourth Principal Meridian, as described hereon; and that from this evidence I established a new monument and accessories as described hereon to perpetuate the original location of this corner.

Resident witnesses:

.....



○ = Corner monument restored.

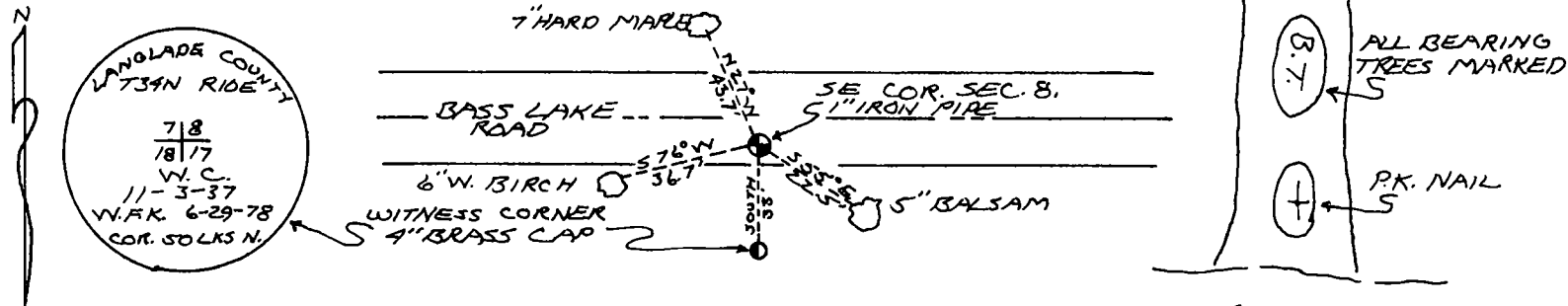
History of original corner establishment:

Description of corner evidence found:

LOCATED WITNESS CORNER SET ON 1937 RE-SURVEY OF TOWNSHIP.

SET 1" IRON PIPE UNDER ROAD SURFACE AND MARKED NEW B.T.'s

Description of monument and accessories I established to perpetuate the original location of this corner.



William F. Kelly

Dated at ELCHO, Wis., this 13 day of DECEMBER, 1978.

Signature William F. Kelly Title COUNTY SURVEYOR Registration No. S-1098
 (County Surveyor, Registered Land Surveyor, or other duly authorized official)

Office of Register of Deeds, County of....., I hereby certify that the within instrument was filed in this office for record on the.....day of....., 19..... at.....o'clock..... M.

(Register of Deeds)

By.....Deputy