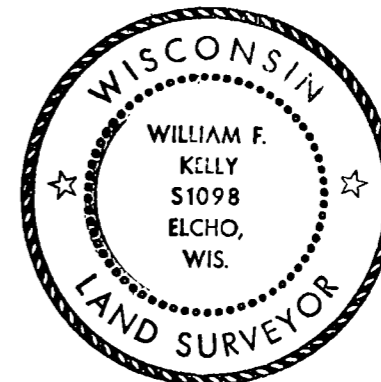


CERTIFIED LAND CORNER RESTORATION

Index No. C-113  
013



State of Wisconsin }  
 County of LANGLADE } ss.

History of original corner establishment:

I WILLIAM F. KELLY, do hereby certify that on the 30TH day of DECEMBER, 1976, I found evidence of the 1/4 corner of SECTIONS 4 & 3 Township 34, North, Range 10E, Fourth Principal Meridian, as described hereon; and that from this evidence I established a new monument and accessories as described hereon to perpetuate the original location of this corner.

Description of corner evidence found:  
4" IRON PIPE WITH BRASS CAP SET ON 1937 RESURVEY.  
CORNER IS LOCATED IN A MARSH.

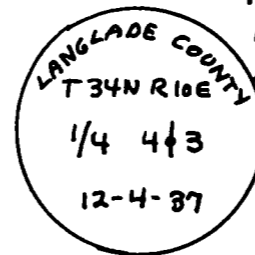
*William F. Kelly 12-30-76*

Resident witnesses:

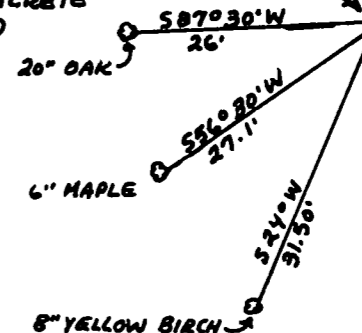
.....  
 .....  
 .....

Description of monument and accessories I established to perpetuate the original location of this corner.

MARKED WITNESS TREES

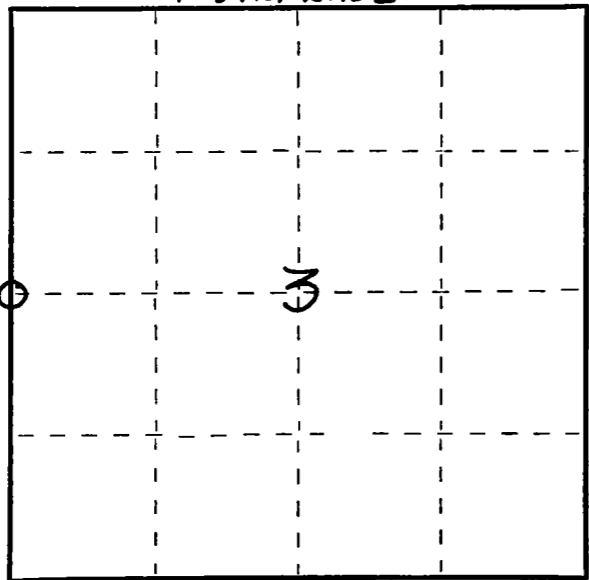


4" PIPE WITH BRASS CAP SET IN CONCRETE MARKED:



FORM 985 M. C. MILLER CO., MILWAUKEE

T. 34N, -R. 10E.



○ = Corner monument restored.

Dated at ELCHO, Wis., this 30TH day of DECEMBER, 1976.

Signature William F. Kelly Title REGISTERED LAND SURVEYOR Registration No. 51098  
 (County Surveyor, Registered Land Surveyor, or other duly authorized official)

Office of Register of Deeds, County of ....., I hereby certify that the within instrument was filed in this office for record on the ..... day of ....., 19..... at ..... o'clock ..... M.

.....  
 (Register of Deeds)

By ..... Deputy