

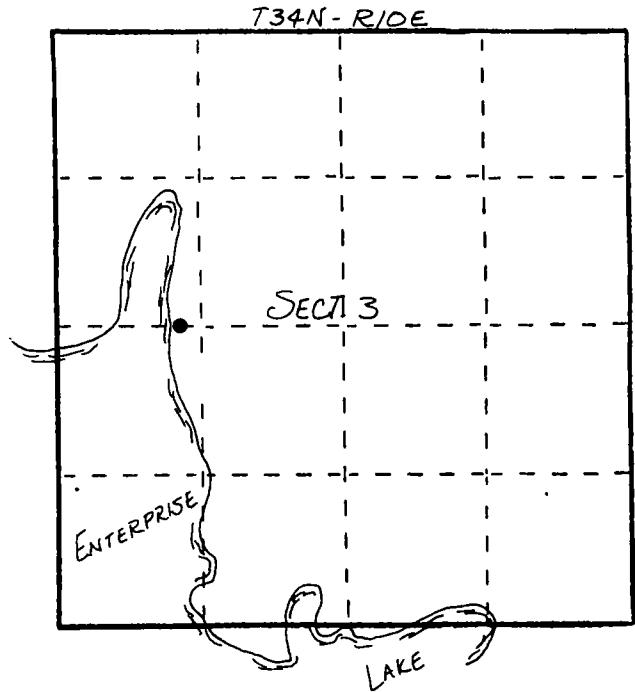
U. S. PUBLIC LAND SURVEY MONUMENT RECORD

INSTRUCTIONS: This record shall show the location of the corner and shall include all of the following nine elements (a through i).

(a) Identify the corner by reference to the U.S. public land survey system.

○ = Corner monument restored.

SET NEW MEANDER CORNER BACK FROM SHORELINE. OLD MC. IN WATER AT TIMES AND SHORELINE IS ERODING



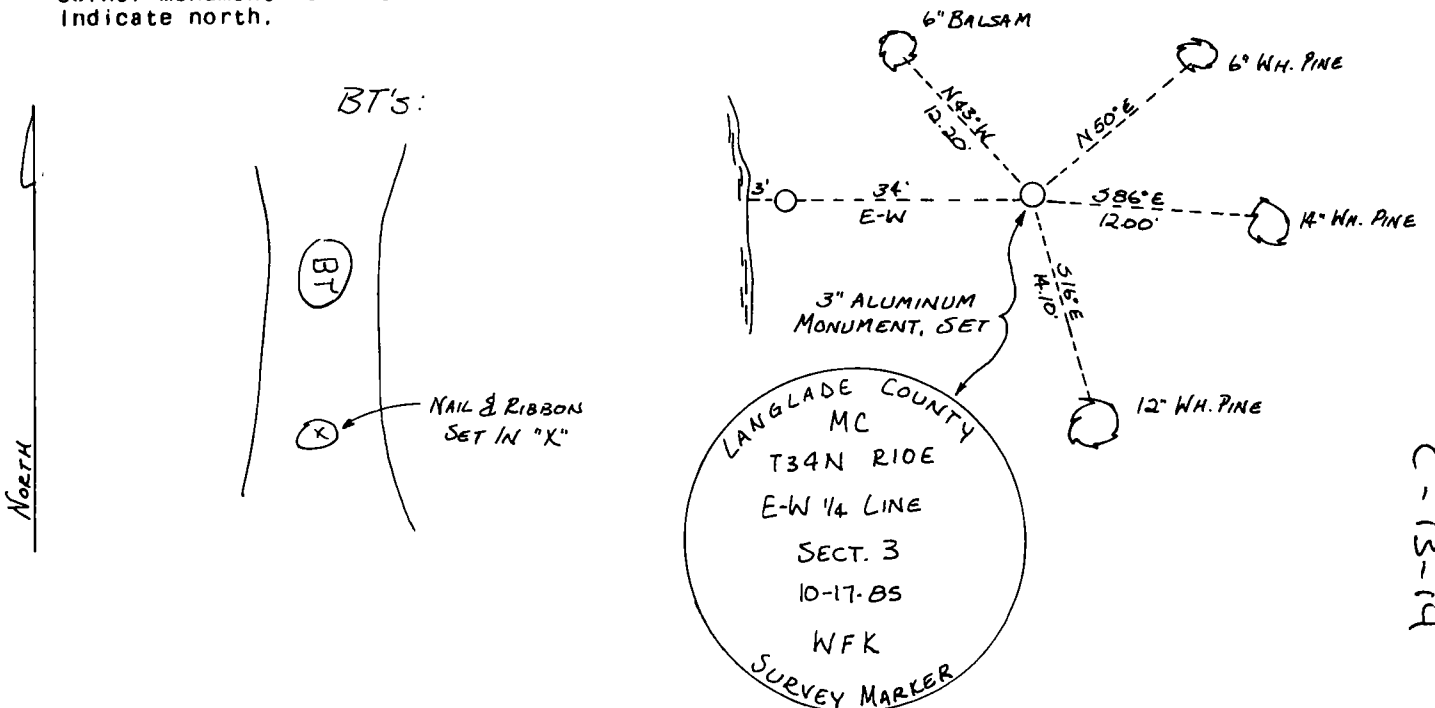
(b) Describe any record evidence, monument evidence, occupational evidence, testimonial evidence or any other material evidence you considered, and whether the monument was found or placed.

FOUND IN PLACE: 4" BRASS CAP MEANDER CORNER 3' FROM SHORELINE.

SET 3" ALUMINUM MEANDER CORNER 34' E OF EXIST. CORNER.

(c) In the plan view drawing below, provide reference ties to at least 4 witness monuments, or, if the location is within a municipality, to at least 2 witness monuments. (Witness monuments shall be made of concrete, natural stone, iron or other equally durable material.) Describe witness monuments.

(d) Show a plan view drawing depicting the relevant monuments and reference ties which is sufficient in detail to enable accurate relocation of the corner monument if the corner monument is disturbed. Indicate north.



C-13-14

(e) Describe any material discrepancy between the location of the corner as restored or reestablished and the location of that corner as previously restored or reestablished by distance and direction. Show the discrepancy on the plan view drawing under (d), above. Show the distances between the corner as previously restored or reestablished and (1) the corner as restored or reestablished, and (2) to at least 2 of the witness monuments shown on the drawing in (d), above.

NEW CORNER SET 34' E OF EXISTING M.C. ON 1/4 LINE

(f) Was the corner restored through acceptance of (1) an obliterated evidence location, or, (2) a found perpetuated location?

No.

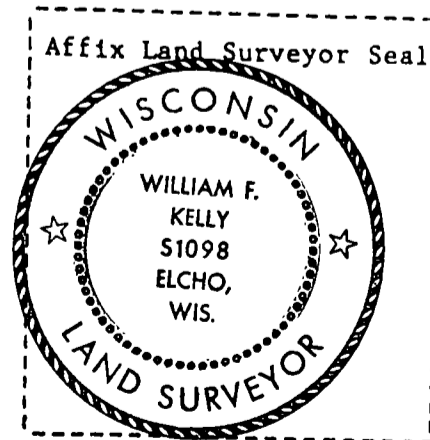
(g&h) Was the corner reestablished through lost corner proportionate methods? If so, show the method, including the directions and distances to other public land survey corners used as evidence or used for proportioning in determining the corner location?

No.

(1) I, WILLIAM F. KELLY R.L.S. 1098 COUNTY SURVEYOR
(type or print name) certify that the corner location shown on this record was determined by me or under my direction and control and that this U.S. Public Land Survey Monument Record is correct and complete to the best of my knowledge and belief.

William F. Kelly
Signature

12-31-85
Date



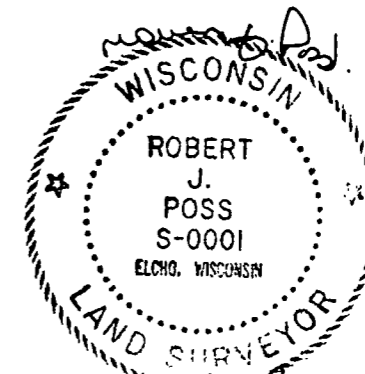
CERTIFIED LAND CORNER RESTORATION

34-10
Index No. C-13-14

State of Wisconsin }
County of LANGLADE } ss.

History of original corner establishment:

I, ROBERT J. POSS, do hereby certify that on the 19TH day of JUNE, 1968, I found evidence of the MEANDER corner on E-W 1/4 LINE SEC 3 Township 34, North, Range 10 EAST, Fourth, Principal Meridian, as described hereon; and that from this evidence I established a new monument and accessories as described hereon to perpetuate the original location of this corner.



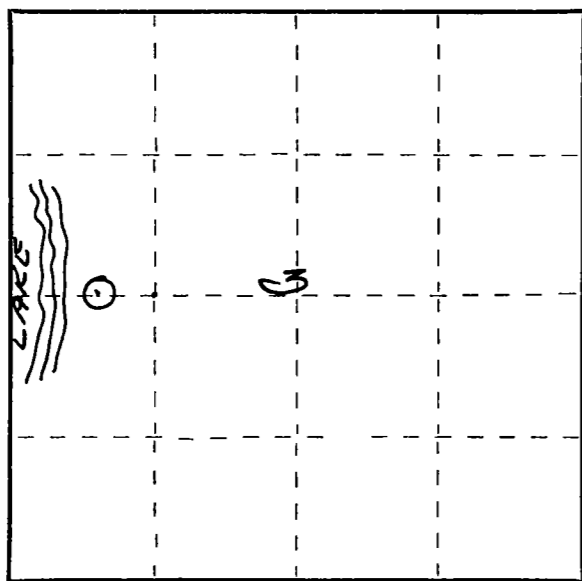
Description of corner evidence found:

FOUND IRON PIPE IN MOUND OF STONES SET BY BORTH.

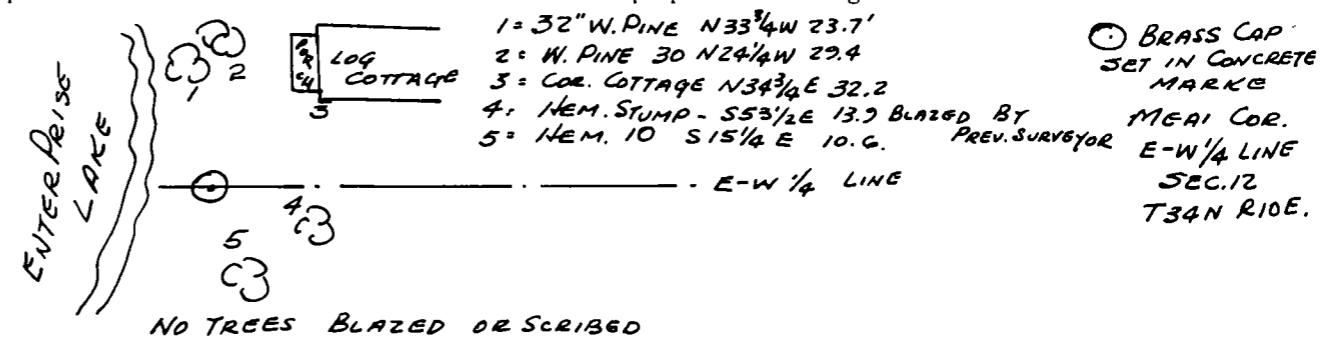
Resident witnesses:

.....
.....
.....

Description of monument and accessories I established to perpetuate the original location of this corner.



BRS ARE MAG.



Dated at ELCHO, Wis., this 19TH day of JUNE, 1968.

Signature Robert J. Poss Title REG. LAND SURVEYOR Registration No. 5-1
(County Surveyor, Registered Land Surveyor, or other duly authorized official)

Office of Register of Deeds, County of _____, I hereby certify that the within instrument was filed in this office for record on the _____ day of _____, 19____ at _____ o'clock _____ M.

(Register of Deeds)

By _____ Deputy

○ = Corner monument restored.

FORM 985 H. C. MILLER CO., MILWAUKEE