

CERTIFIED LAND CORNER RESTORATION

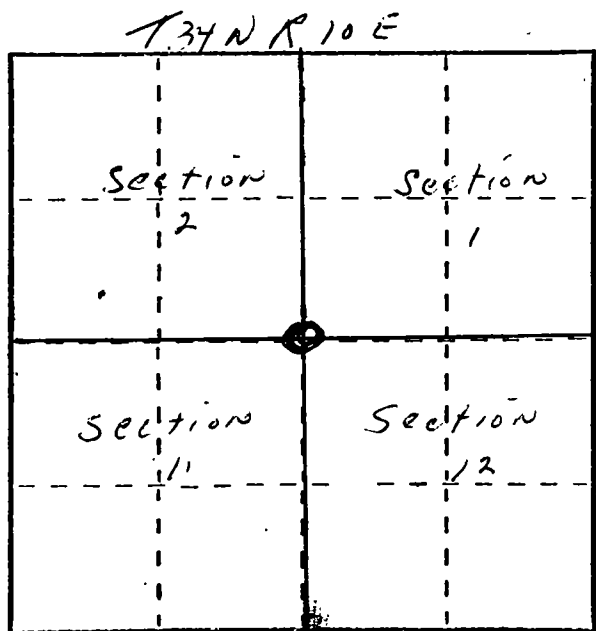
34-10
Index No. E-21

State of Wisconsin }
County of Langlade } ss.

I, Raymond Hallisy, do hereby certify that on the 16th day of June, 1973, I found evidence of the Section corner of 12 2 11 1 2 Township 34, North, Range 10 E, Fourth Principal Meridian, as described hereon; and that from this evidence I established a new monument and accessories as described hereon to perpetuate the original location of this corner.

Resident witnesses:

.....
.....
.....



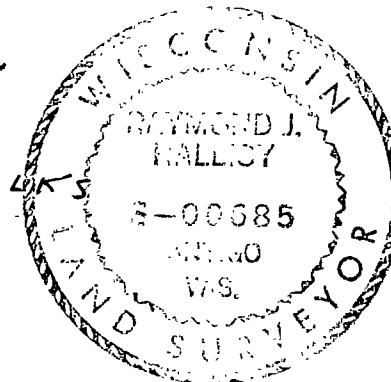
○ = Corner monument restored.

History of original corner establishment:

Corner Set in The 1930 Resurvey

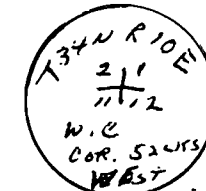
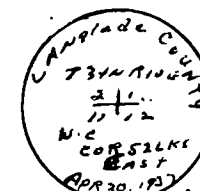
Description of corner evidence found:

BT Hand maple 12" N 87 1/2 W 38.5 LKS
Corner removed in road building
4" Brass cap



Description of monument and accessories I established to perpetuate the original location of this corner.

Set original 4" brass cap 52 LKS west of true corner
Set 2" pipe with brass cap 52 LKS EAST of true corner
New BT's to true corner
Hard maple 8" S 86 E 62 LKS
Red Pine 8" S 46 W 83 LKS



Dated at Antigo, Wis., this 16th day of June, 1973.

Signature Raymond J. Hallisy Title Reg. Land Surveyor Registration No. 8685
(County Surveyor, Registered Land Surveyor, or other duly authorized official)

Office of Register of Deeds, County of _____, I hereby certify that the within instrument was filed in this office for record on the _____ day of _____, 19____ at _____ o'clock _____ M.

(Register of Deeds)

By _____ Deputy