

CERTIFIED LAND CORNER RESTORATION

Index No. E-25  
E 1 in R. 11

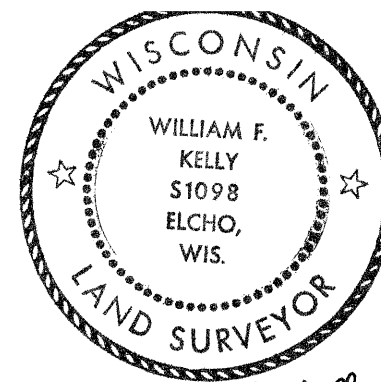
State of Wisconsin }  
County of LANGLADE } ss.

I WILLIAM F. KELLY, do hereby certify that on the 9TH day of DECEMBER 1975, I found evidence of the SECTION corner of SECTIONS 1, 6, 12, & 7 Township 34, North, Range 10E & 11E, Fourth Principal Meridian, as described hereon; and that from this evidence I established a new monument and accessories as described hereon to perpetuate the original location of this corner.

Resident witnesses:

E. GOEPFERT

History of original corner establishment:

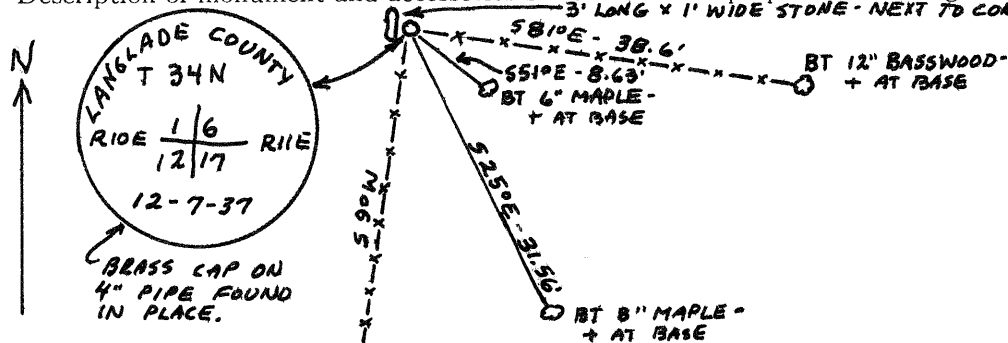


*William F. Kelly*

Description of corner evidence found:

SOUTH EAST CORNER SECT. 1 - T. 34N. - R. 10E. LOCATED AT FENCE INTERSECTION. CORNER IS BRASS CAP ON 4" PIPE AND WAS LEANING AT AN ANGLE OF 45°. RESIDENT WITNESS SAID TRACTOR HAD HIT POST.

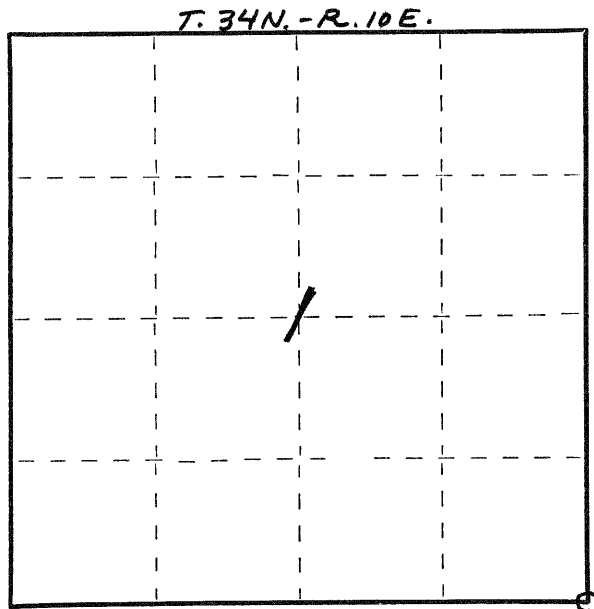
Description of monument and accessories I established to perpetuate the original location of this corner.



POST SET UPRIGHT AND WITNESS TREES MARKED.

CORNER IS LOCATED 1/4 MILE EAST OF HGW. 45.

FORM 985 H. C. MILLER CO., MILWAUKEE



○ = Corner monument restored.

Dated at ELCHO, Wis., this 9TH day of DECEMBER, 1975

Signature William F. Kelly Title REGISTERED LAND SURVEYOR Registration No. 51098  
(County Surveyor, Registered Land Surveyor, or other duly authorized official)

Office of Register of Deeds, County of \_\_\_\_\_, I hereby certify that the within instrument was filed in this office for record on the \_\_\_\_\_ day of \_\_\_\_\_, 19\_\_\_\_ at \_\_\_\_\_ o'clock \_\_\_\_\_ M.

(Register of Deeds)

By \_\_\_\_\_ Deputy