

LANGLADE COUNTY U.S. PUBLIC LAND CORNER RESTORATION

The East Quarter corner of Section 36, T. 34 N., R. 9 E., Langlade County, WI.

Corner was: (check all that apply)

43409362000

- Restored through acceptance of an obliterated evidence location.
- Restored through acceptance of a found perpetuated location.
- Determined to be lost and re-established through proportionate methods.
- Show bearings and distances to PLSS corners used for proportioning, and show original distances).
- Restored/recovered/re-established in a location that differs from a previously established position.
- (Show difference in plan view below).
- Check here if additional information is shown on the reverse side of this form.

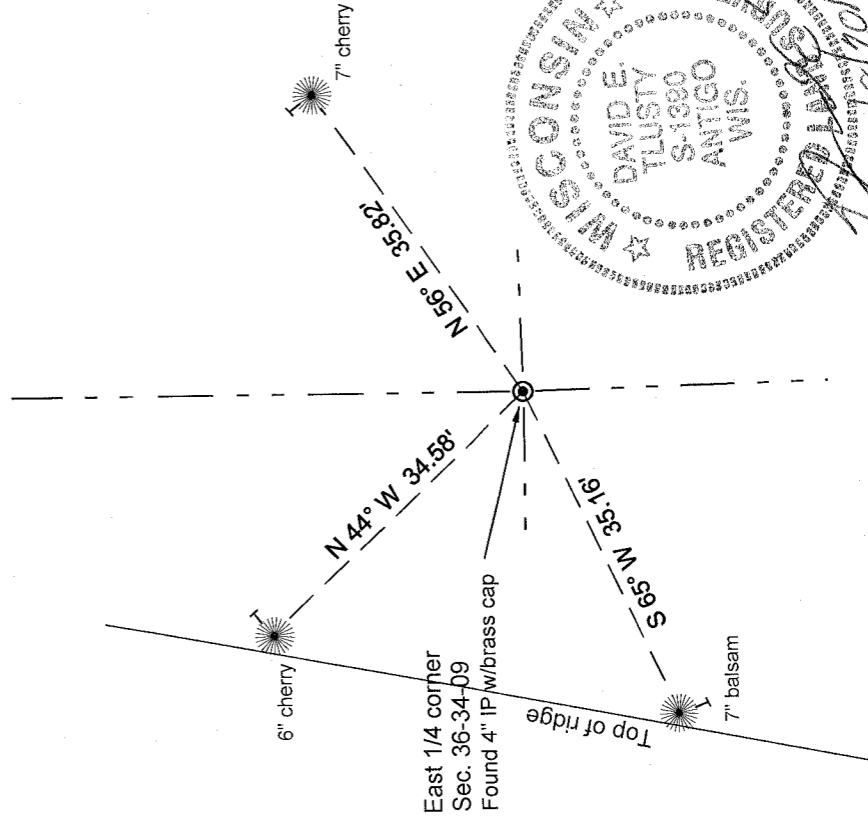
Describe record evidence, recovered physical evidence, occupational evidence, testimonial evidence and all other evidence considered in the recovery/restoration of the corner.

The original corner was established in 1859 by Hiram Fellows. Original bearing trees: hemlock, 12", N80°E, 8 links and a hemlock, 10", N75°W, 12 links. In the 1930's re-survey of 34-10, Hintze re-established this corner by proportionate measurement and set a 4" iron pipe with brass cap. 11/16/99, D. Tlusty, Pete Solin found the 4" iron pipe with brass cap in good condition, on a sidehill, 30 feet from the top of a N-S ridge. Measured bearing trees as shown below.

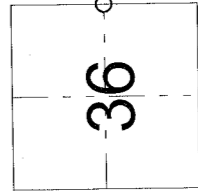
Physical description of the monument set:

For the corner, I left the existing 4" dia. iron pipe with brass cap in place.
I set a white vinyl sign post 0.5' east of corner monument

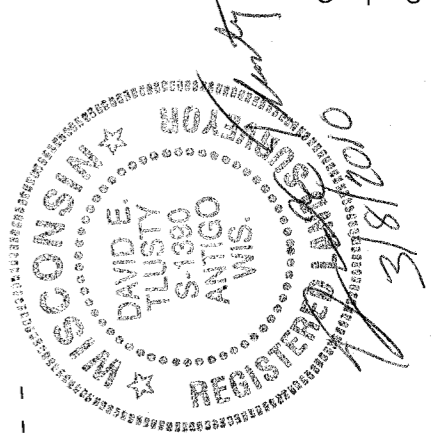
Describe the accessories used to perpetuate the corner. Include a plan view drawing and accessories found/set. Describe measuring point on bearing trees. Show any topographic features that would aid in future recovery of the corner.



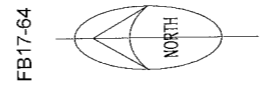
Index No. X25 34-09



○ = corner perpetuated
The East quarter corner of Section 36, T. 34 N., R. 9 E., Langlade County, WI



I, David E. Tlusty, Registered Land Surveyor, as Langlade County Surveyor, certify that the corner location on this record was determined by me and that this U.S. Public Land Survey Monument Record is correct to the best of my knowledge and belief.



FB17-64

- LEGEND**
- 3/4" x 30" rebar set
 - 3/4" iron pipe found
 - ⊙ 4" ip with brass cap
 - utility pole
- Tie bearings magnetic with hand compass.
 BT's measured to aluminum nail in a low blaze on the side of the trees shown: Y