

CERTIFIED LAND CORNER RESTORATION

Index No. A-23
33-9

State of Wisconsin }
County of Lançlade } ss.

I Raymond J. Hallisy, do hereby certify that on the 28th day of July, 1979, I found evidence of the 1/4 corner of Section 1 & 36 Township 33 & 34, North, Range 9E 16W, Fourth Principal Meridian, as described hereon; and that from this evidence I established a new monument and accessories as described hereon to perpetuate the original location of this corner.

History of original corner establishment:

Corner set in the 1930 resurvey.

~~XXXX~~

Description of corner evidence found:

4" pipe with brass cap.

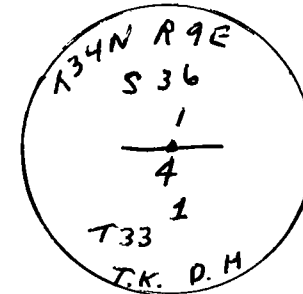
Resident witnesses:

.....
.....
.....

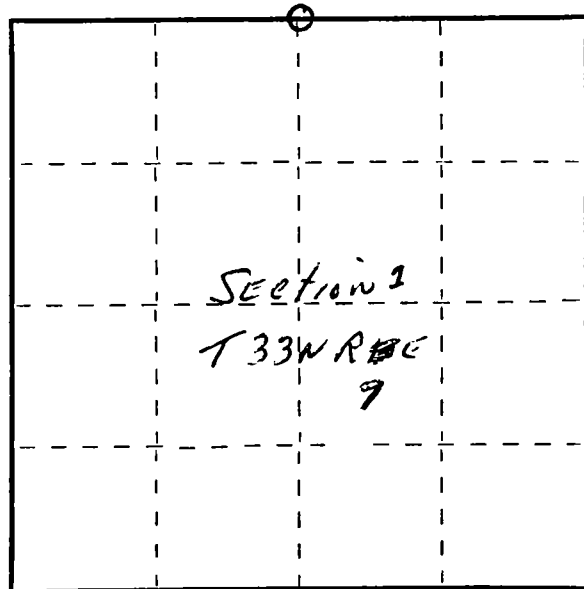
Description of monument and accessories I established to perpetuate the original location of this corner.

New BT's

10" White Birch N40W 19' 11"
14" White Birch S64W 17' 3"
9" Red Maple S60E 21' 1"



FORM 985 R. C. MILLER CO. MILWAUKEE



○ = Corner monument restored.

Dated at Antico, Wis., this 28th day of July, 1979.

Signature Raymond J. Hallisy Title Reg. Surveyor Registration No. S685
(County Surveyor, Registered Land Surveyor, or other duly authorized official)

Office of Register of Deeds, County of....., I hereby certify that the within instrument was filed in this office for record on the.....day of....., 19..... at..... o'clock..... M.

.....
(Register of Deeds)

By.....Deputy