

CERTIFIED LAND CORNER RESTORATION

34-9
Index No. Y-17

State of Wisconsin }
County of Langlade } ss.

History of original corner establishment:

I Raymond J. Hallisy, do hereby certify that on the 13th day of July, 1968, I found evidence of the S 1/16 corner of Section 34 Township 34, North, Range 9, Fourth Principal Meridian, as described hereon; and that from this evidence I established a new monument and accessories as described hereon to perpetuate the original location of this corner.

Corner set in the 1930's by: T. H. Kilroe
D. A. Hintz

Description of corner evidence found:

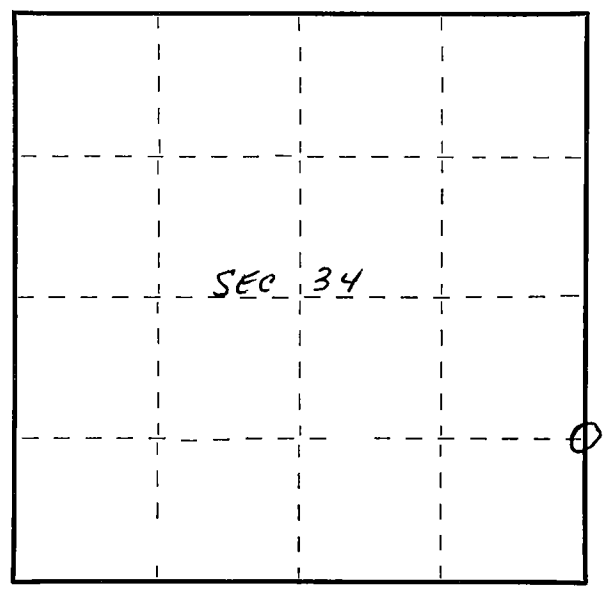
Found old stake standing. No markings. Also L. P. on road with distance of 3.46 Chs. west to corner. Distance from L. P. correct.

Resident witnesses:
.....
.....
.....

Description of monument and accessories I established to perpetuate the original location of this corner.

Set Std. 1 1/2" pipe with cap marked 34 35 S 1/16

FORM 985 H. C. MILLER CO., MILWAUKEE



OK 6" DOUBLE MAPLE
N58°E 12'4"

I.P.
•

16" CLUMP WASH
S27°W 19'4"

Dated at Antigo, Wis., this 13th day of July, 1968.

Signature Raymond J. Hallisy Title Reg. Land Surveyor Registration No. 1-685
(County Surveyor, Registered Land Surveyor, or other duly authorized official)

Office of Register of Deeds, County of....., I hereby certify that the within instrument was filed in this office for record on the..... day of....., 19..... at..... o'clock..... M.

(Register of Deeds)

By..... Deputy

○ = Corner monument restored.