

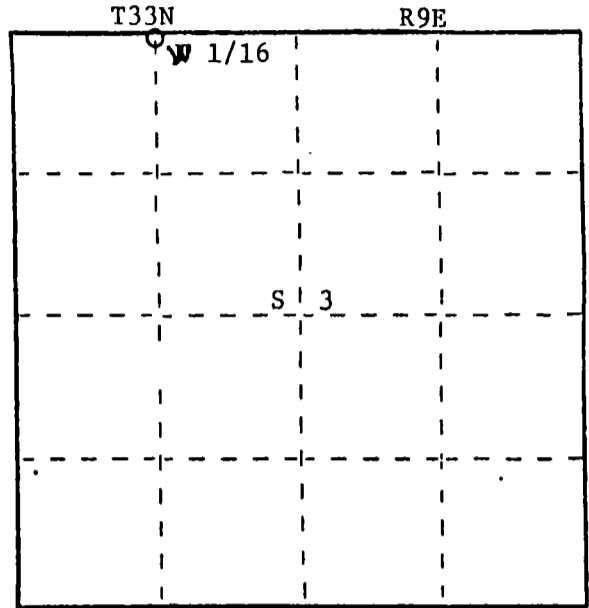
# U. S. PUBLIC LAND SURVEY MONUMENT RECORD

**INSTRUCTIONS :**

This record shall show the location of the corner and shall include all of the following nine elements (a through i).

- (a) Identify the corner by reference to the U.S. public land survey system.

○ = Corner monument restored.

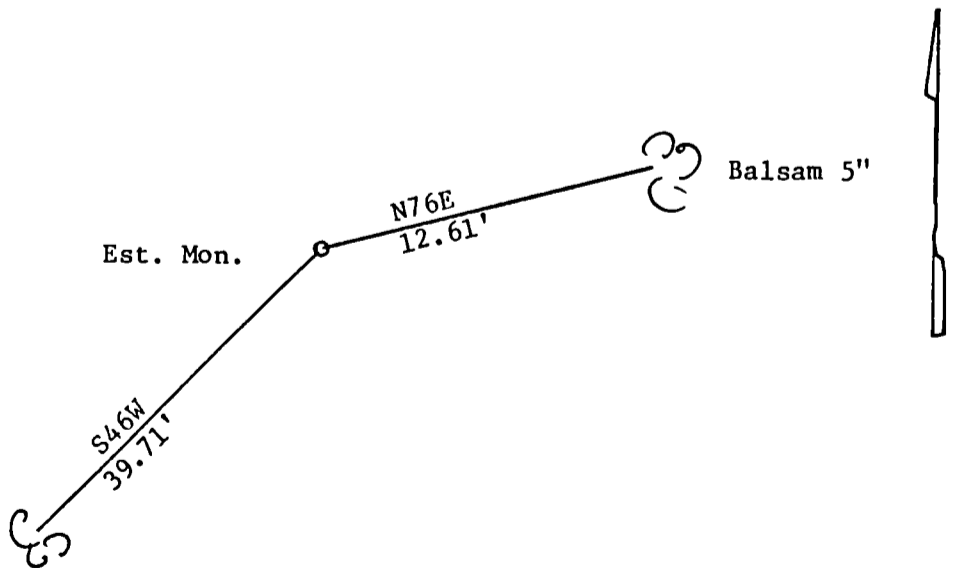


- (b) Describe any record evidence, monument evidence, occupational evidence, testimonial evidence or any other material evidence you considered, and whether the monument was found or placed.

Monument placed by proportional distance

- (c) In the plan view drawing below, provide reference ties to at least 4 witness monuments, or, if the location is within a municipality, to at least 2 witness monuments. (Witness monuments shall be made of concrete, natural stone, iron or other equally durable material.) Describe witness monuments.

- (d) Show a plan view drawing depicting the relevant monuments and reference ties which is sufficient in detail to enable accurate relocation of the corner monument if the corner monument is disturbed. Indicate north.



S1682  
T34N R9E  
N 1/16 S 34  
S 3  
T33N R9E  
C.P.I.-1983

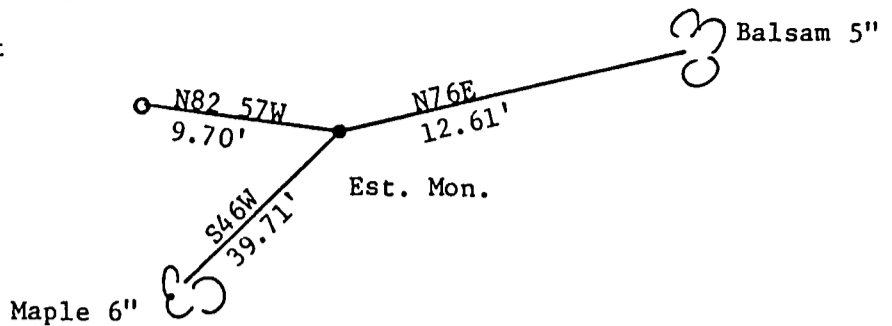
1" x 4½' Iron pipe w/  
2" diameter alloy cap

349

Z  
hi-14

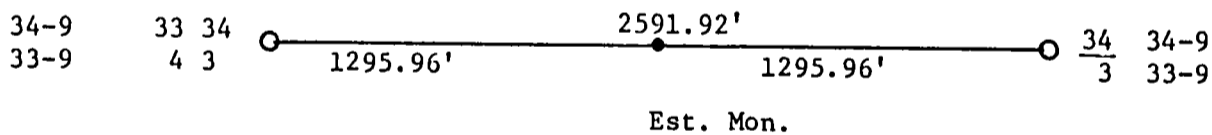
(e) Describe any discrepancy between the location of the corner or reestablished the location of that corner as previously restored or established by distance and direction. Show the discrepancy on the plan view drawing under (d), above. Show the distances between the corner as previously restored or reestablished and (1) the corner as restored or reestablished, and (2) to at least 2 of the witness monuments shown on the drawing in (d), above.

old 2" I.P. B.C. Monument

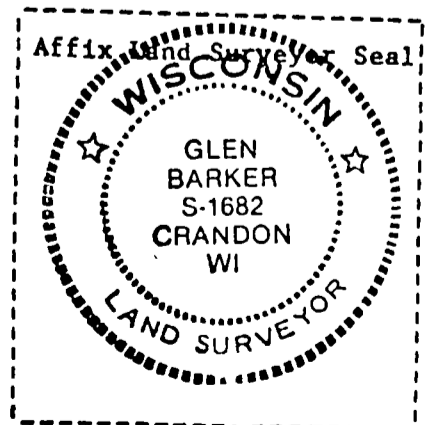


(f) Was the corner restored through acceptance of (1) an obliterated evidence location, or, (2) a found perpetuated location?

(g&h) Was the corner reestablished through lost corner proportionate methods? If so, show the method, including the directions and distances to other public land survey corners used as evidence or used for proportioning in determining the corner location?



(i) I, Glen Barker  
 (Type or print name) certify that the corner location shown on this record was determined by me or under my direction and control and that this U.S. Public Land Survey Monument Record is correct and complete to the best of my knowledge and belief.



Signature

Date

*Glen Barker* 6/10/83

CERTIFIED LAND CORNER RESTORATION

34-9  
Index No. 20-14

State of Wisconsin }  
County of Lafayette } ss.

History of original corner establishment:

Corner set in the 1930 resurvey

I Raymond Halliday do hereby certify that on the 12<sup>th</sup> day of MAY, 1973, I found evidence of the W 116 corner of Sec. 34 - T34N R9E Township 33 - 4, North, Range 7 E, Fourth, Principal Meridian, as described hereon; and that from this evidence I established a new monument and accessories as described hereon to perpetuate the original location of this corner.

Description of corner evidence found:

Wood Stake Standing  
Marked 48

Resident witnesses:

.....  
.....  
.....

Description of monument and accessories I established to perpetuate the original location of this corner.

Set 1 1/2" iron pipe with brass cap - marked

New 137's

Balsam 5" S 52 E 41.3 LKS

Balsam 4" N 36 E 37.0 LKS



Dated at Amherst, Wis., this 12<sup>th</sup> day of MAY, 1973

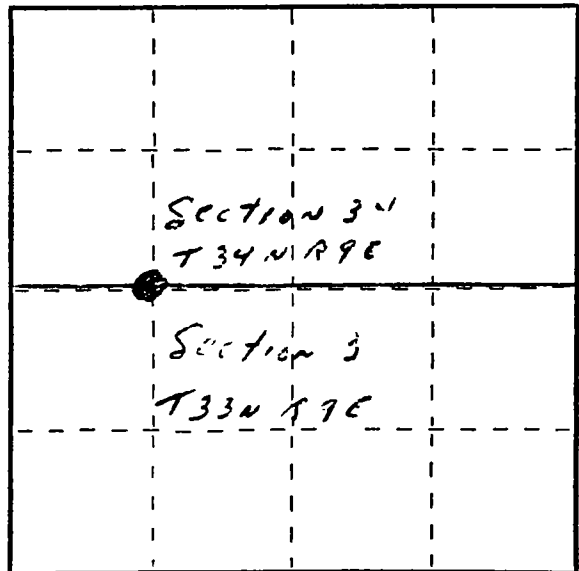
Signature [Signature] Title \_\_\_\_\_ Registration No. \_\_\_\_\_  
(County Surveyor, Registered Land Surveyor, or other duly authorized official)

Office of Register of Deeds, County of \_\_\_\_\_, I hereby certify that the within instrument was filed in this office for record on the \_\_\_\_\_ day of \_\_\_\_\_, 19\_\_\_\_ at \_\_\_\_\_ o'clock \_\_\_\_\_ M.

.....  
(Register of Deeds)

By \_\_\_\_\_ Deputy

FORM 905 M. C. MILLER CO. MILWAUKEE



○ = Corner monument restored.