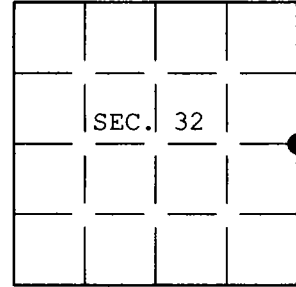


43409322000

U.S. PUBLIC LAND SURVEY MONUMENT RECORD

Note: This form is intended and designed to fulfill all requirements of Wisconsin Administrative Code, Chapter A-E 7.08 U.S. Public Land Survey Monument Record (3) (a) (b) (c) (d) (e) (f) (g) (h) (i). An additional sheet may be added if necessary to conform with said requirements.

(a) CORNER LOCATION: Plane Coordinates
1/4 Cor. of Secs. 32 & 33 X:
Township 34 North Y:
Range 9 East of the 4th P.M. Datum:
Town of Parrish County of Langlade



(b) HISTORY OF ORIGINAL CORNER ESTABLISHMENT

Original Surveyor: J.L. Nowlin Original Accessories:
Date of Survey: Commenced Sept. 1864 Tamarack 6" S.60°W., 12 lks.
Completed Oct. 1864 Cedar 6" S.67°E., 12 lks.

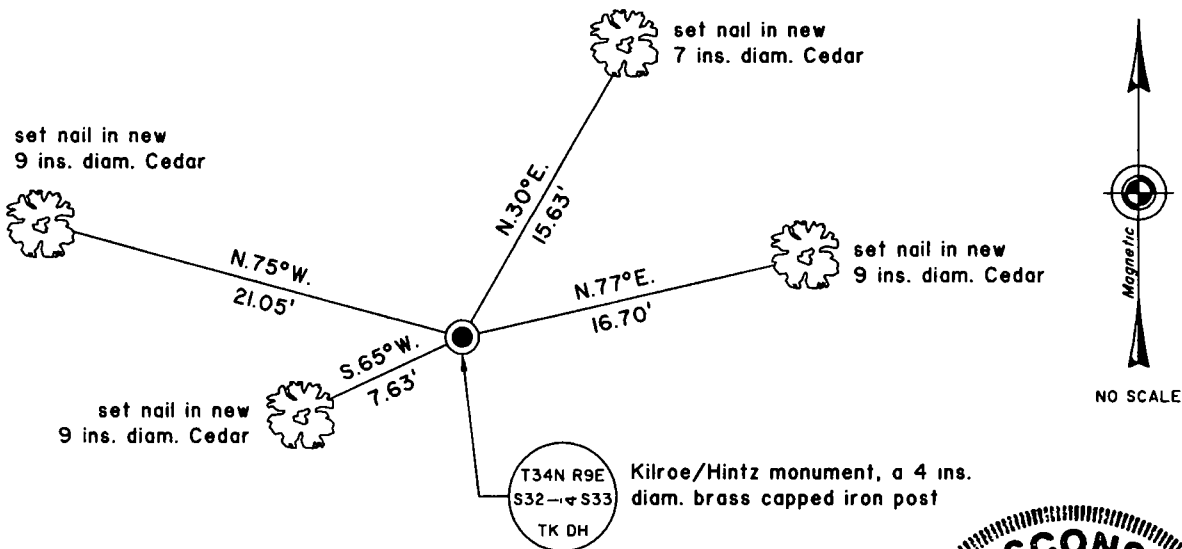
(b) (f) (g) (h) Description of monument found at this corner and if it was accepted, state all evidence (material, testimonial, occupational, plats, records, other monuments) used as a basis for accepting. If not accepted or if nothing was found, state evidence used as basis for establishing location. If re-established through lost corner proportionate methods, indicate all monuments, distances and directions used to establish. Indicate type of monument and sign post found or set.

5 May 1905: While running the East-West 1/4 line of Sec. 32, E.S. Brooks, Langlade County Surveyor, visits this corner and notes "Orig. B.T. Tam. standing, Cedar down. New Tam. 10 S31E 13-1/2"

1936-1937: During the resurvey of T. 34 N., R. 9 E., T.H. Kilroe and D.A. Hintz visit this corner and note "To orig. 1/4 cor., orig. Tam stp. S60W 12, New cedar 6 N30W 12.57"

7 Dec. 2004: I found and accepted the Kilroe/Hintz monument, a 4 ins. diam. iron post, projecting 10 ins. above the bog with brass cap mkd. as shown below. I found the Kilroe/Hintz cedar tipped down to the bog at their record bearing and distance. I established accessories as shown below and set a white plastic sign post bearing Northeast, 1 ft. dist.

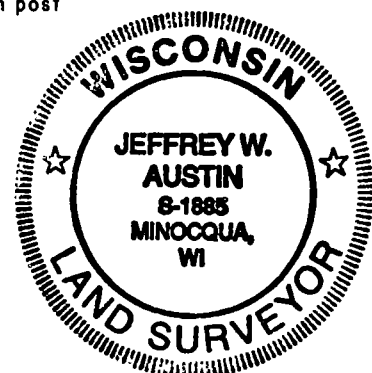
(c) (d) (e) Plan view of corner with ties to at least 4 witness monuments. If in disagreement with previously established corner, show the distances between the two corners and also indicate the ties to the disputed.



(i) I, Jeffrey W. Austin, Registered Land Surveyor No. S-1885, hereby certify upon honor that the corner location on this record was determined by me or under my direction and control and that this U.S. Public Land Survey Monument Record is correct and complete to the best of my knowledge and belief.

Signature

8 JAN 2005
Date



INDEX NO. X-9