

CERTIFIED LAND CORNER RESTORATION

34-9  
Index No. Z-4

State of Wisconsin }  
County of Langlade } ss.

History of original corner establishment:  
**Corner Reestablished in resurvey in 1937 by D.A. Hintz & T.H. Kilroe**

I, Raymond J. Hallisy, do hereby certify that on the 3rd day of May, 1969, I found evidence of the East 1/16 cor corner of Section 31 Township 34 N, North, Range 9 E, Fourth, Principal Meridian, as described hereon; and that from this evidence I established a new monument and accessories as described hereon to perpetuate the original location of this corner.

Description of corner evidence found:  
**Old 4 " squared post scribed and standing.**

Resident witnesses:

Gerald Kryka

Gerald Weix

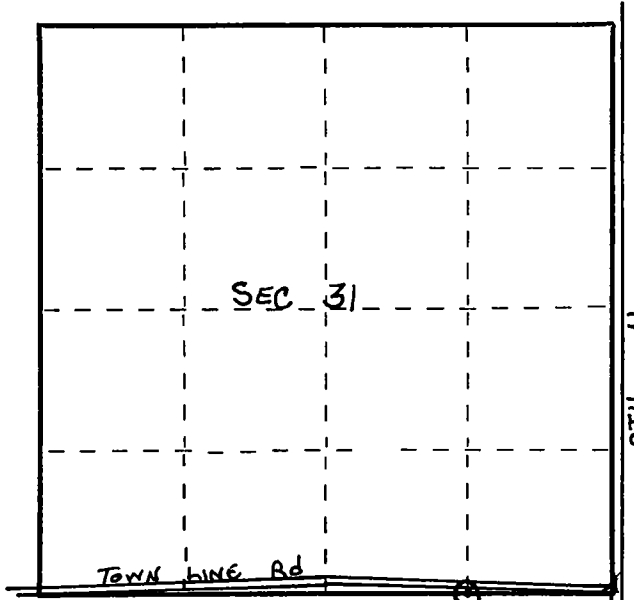
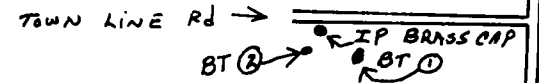
Description of monument and accessories I established to perpetuate the original location of this corner.

Corner: **1 1/2" Iron Pipe with Brass Cap 4 Ft. Long.**  
**Rock Mound around corner.**  
B.Ts. : 1 Sugar Maple 9 inch S 73° E 24 ft. 5 inchs.  
2 Sugar Maple 16 inch S 29° W 15 ft. 6 inchs.

*B.Ts. ARE SCRIBED BT*



*BRASS CAP*



○ = Corner monument restored.

Dated at Antigo, Wis., this 5th day of May, 1969

Signature Raymond J. Hallisy Title Reg. Land Surveyor Registration No. S-685  
(County Surveyor, Registered Land Surveyor, or other duly authorized official)

Office of Register of Deeds, County of \_\_\_\_\_, I hereby certify that the within instrument was filed in this office for record on the \_\_\_\_\_ day of \_\_\_\_\_, 19\_\_\_\_ at \_\_\_\_\_ o'clock \_\_\_\_\_ M.

(Register of Deeds)

By \_\_\_\_\_ Deputy

FORM 985 H. C. MILLER CO., MILWAUKEE