

4340930 2000 2013

# U.S. PUBLIC LAND SURVEY MONUMENT RECORD

(Prepared and as required by S. A-E 7.08 WI Administrative Code)

The EAST 1/4 corner of Section 30, R4 N., R09 E., Langlade County, WI  
 Corner was (check all that apply)

- Restored through acceptance of an obliterated evidence location.
- Restored through acceptance of a found perpetuated location.
- Determined to be lost and re-established through proportionate methods. (show bearings and distances to PLSS corners used for proportioning.)
- Restored/recovered/re-established in a location that differs from a previously established position. (Show difference in plan view below.)
- Check here if additional information is shown on the reverse side of this form.

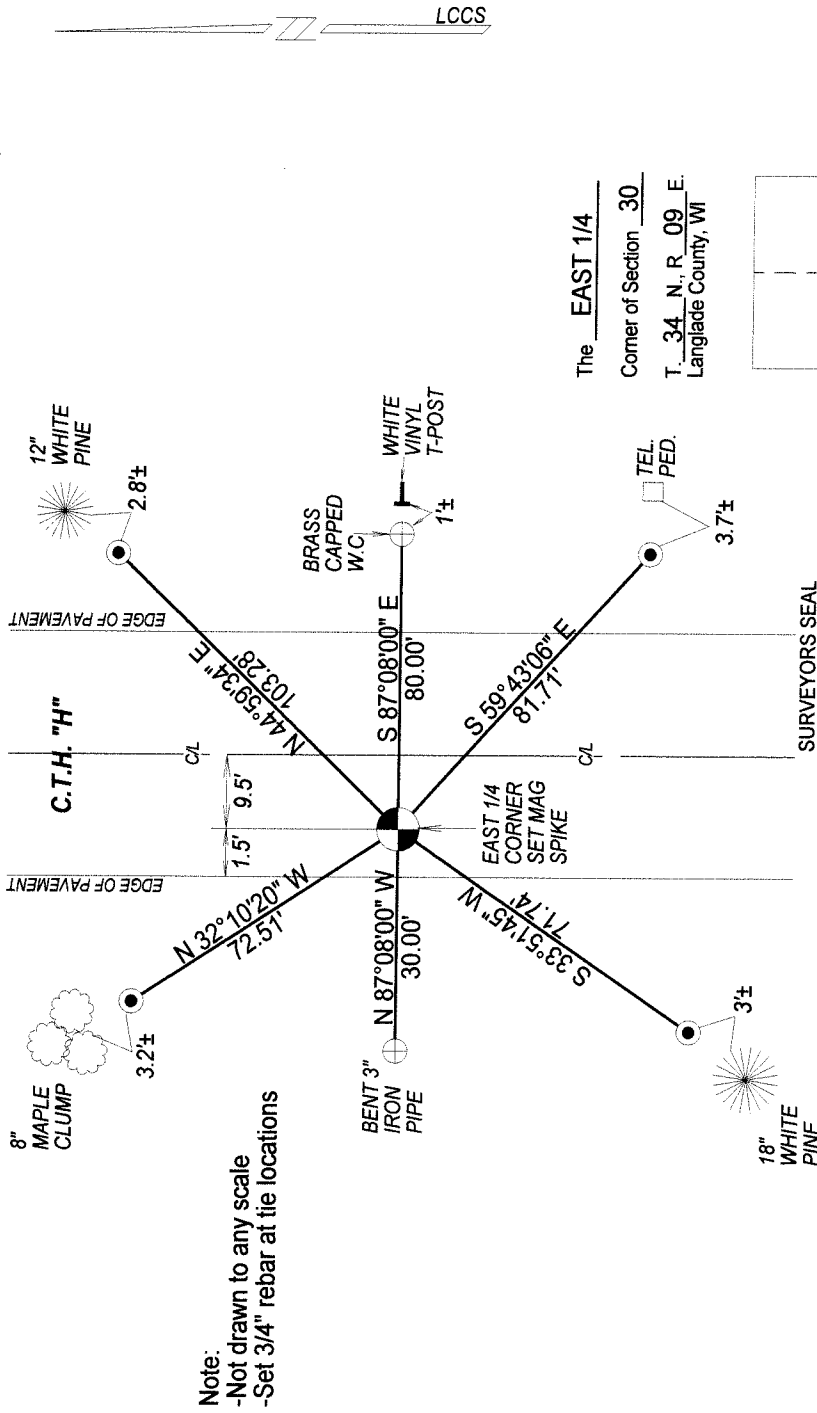
**Describe record evidence, recovered physical evidence, occupational evidence, testimonial evidence, and all other evidence considered in the recovery/restoration of the corner.**

- 1864 - Government Surveyor, J.L. Nowlin set original 1/4 section post and marked bearing trees, Hemlock 13", S 72° E, 50 links, and Hemlock 12", N 82° W, 25 links.
- 1930's Resurvey - Langlade County does not have the field notes of this resurvey, but does have the plat. The 1937 plat indicates that Surveyors T. Kilroe and D. Hirtz set the 1/4 corner. The plat indicates an overall distance from the NE corner to the SE corner of 75.75 chains. I measured 2500.01' to the SE corner, which agrees with a midpoint location based on Hintz's NE corner-SE corner distance. The plat does not indicate what was set to mark the corner or what bearing objects were established.
- 1963 - G. Mckenina & G. Weix found a "4" iron pipe with brass cap W.C. 30' west of corner. Set same pipe 80' east of corner and restamped." They do not indicate what was at the corner location. They prepared a tie sheet and filed in Langlade County.
- 1971 - R. Hallisy "reset corner 80' east of true corner, because of road improvement." Hallisy set a brass cap in cement and made two bearing trees to witness corner, Red maple 6", S11°E, 439", and Cedar 8", 40'2". He prepared and filed a tie sheet in Langlade County.
- 1974 - R. Hallisy "white pine stump BT to W.C. N13°W, 8.6lks, 4" pipe W.C. 80 feet east of true corner." Hallisy set 2" iron pipe with brass cap W.C. 30' west of true corner. Hallisy did not set any new BT's, and prepared and filed a tie sheet with Langlade County.
- 2013 - I found an existing 4" brass capped W.C. 80' east of corner, and I found the W.C. 30' west of true corner bent to the southwest. The distance between the W.C.'s matches with record distances. I set a mag spike 30' east of and 80' west of the W.C.'s.

**Physical description of the monument set:**

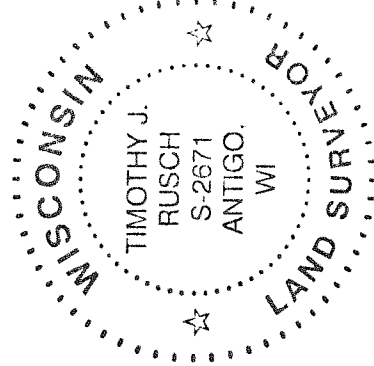
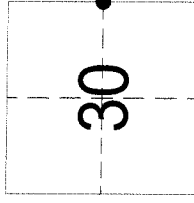
2013 - I set a 4" mag spike at the corner location, and tied it out as follows.

Describe the accessories used to perpetuate the location of the corner. Include a plan view drawing and indicate accessories found/set. Describe measuring point on bearing trees. Show any topographic features that would aid in future recovery of the corner.



Note:  
 -Not drawn to any scale  
 -Set 3/4" rebar at tie locations

The EAST 1/4  
 Corner of Section 30  
 T. 34 N., R. 09 E.  
 Langlade County, WI



I, Timothy J. Rusch certify that the corner location shown on this record was determined by me or under my direction and control and that this U.S. Public Land Survey Monument Record is correct and complete to the best of my knowledge and belief.

Timothy J. Rusch 10/15/2013  
 Signature Date

● = Location of corner