

CERTIFIED LAND CORNER RESTORATION

34-9
Index No. V-8

State of Wisconsin }
County of Langlade } ss.

History of original corner establishment:

I, Raymond J. Hallisy, do hereby certify that on the 10th day of June, 1968, I found evidence of the E 1/16 corner of Section 29 Township 34, North, Range 9, Fourth, Principal Meridian, as described hereon; and that from this evidence I established a new monument and accessories as described hereon to perpetuate the original location of this corner.

Corner set in the 1930's by: T. H. Kilroe
D. A. Hintz

Description of corner evidence found:

**Found squared stake standing in fair shape, rock mound.
Marked S29 S32 1/8 20 LKS S.**

Resident witnesses:

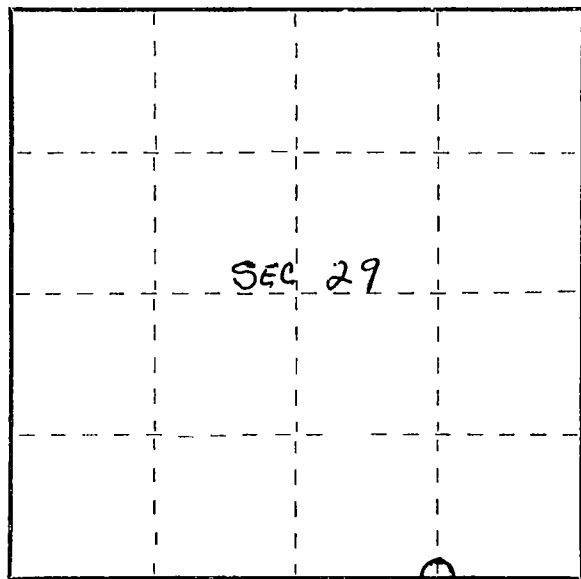
.....
.....
.....

Description of monument and accessories I established to perpetuate the original location of this corner.
**Set Std. 1 1/2" pipe with cap marked W.C. C. 20 LKS. S. E1/16
BT's to witness corner.**

8" ELM SCRIBED BT
O ← N67°E 39' 9"

IP → CALLSEN RD
O
LIGHT POLE SCRIBED BT
S55°W 75' 7"

FORM 585 H. C. MILLER CO., MILWAUKEE



○ = Corner monument restored.

Dated at Antigo, Wis., this 10th day of June, 1968

Signature Raymond J. Hallisy Title Reg Land Surveyor Registration No. S-685
(County Surveyor, Registered Land Surveyor, or other duly authorized official)

Office of Register of Deeds, County of _____, I hereby certify that the within instrument was filed in this office for record on the _____ day of _____, 19____ at _____ o'clock _____ M.

(Register of Deeds)

By _____ Deputy