

U. S. PUBLIC LAND SURVEY MONUMENT RECORD

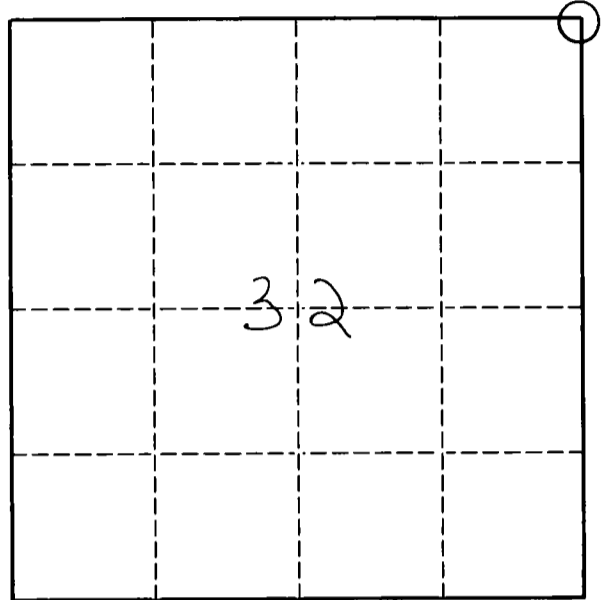
INSTRUCTIONS:

This record shall show the location of the corner and shall include all of the following nine elements (a through i).

- (a) Identify the corner by reference to the U.S. public land survey system.

O = Corner monument restored.

Sec. Cor. 28, 29, 32, 33
T34N, R9E



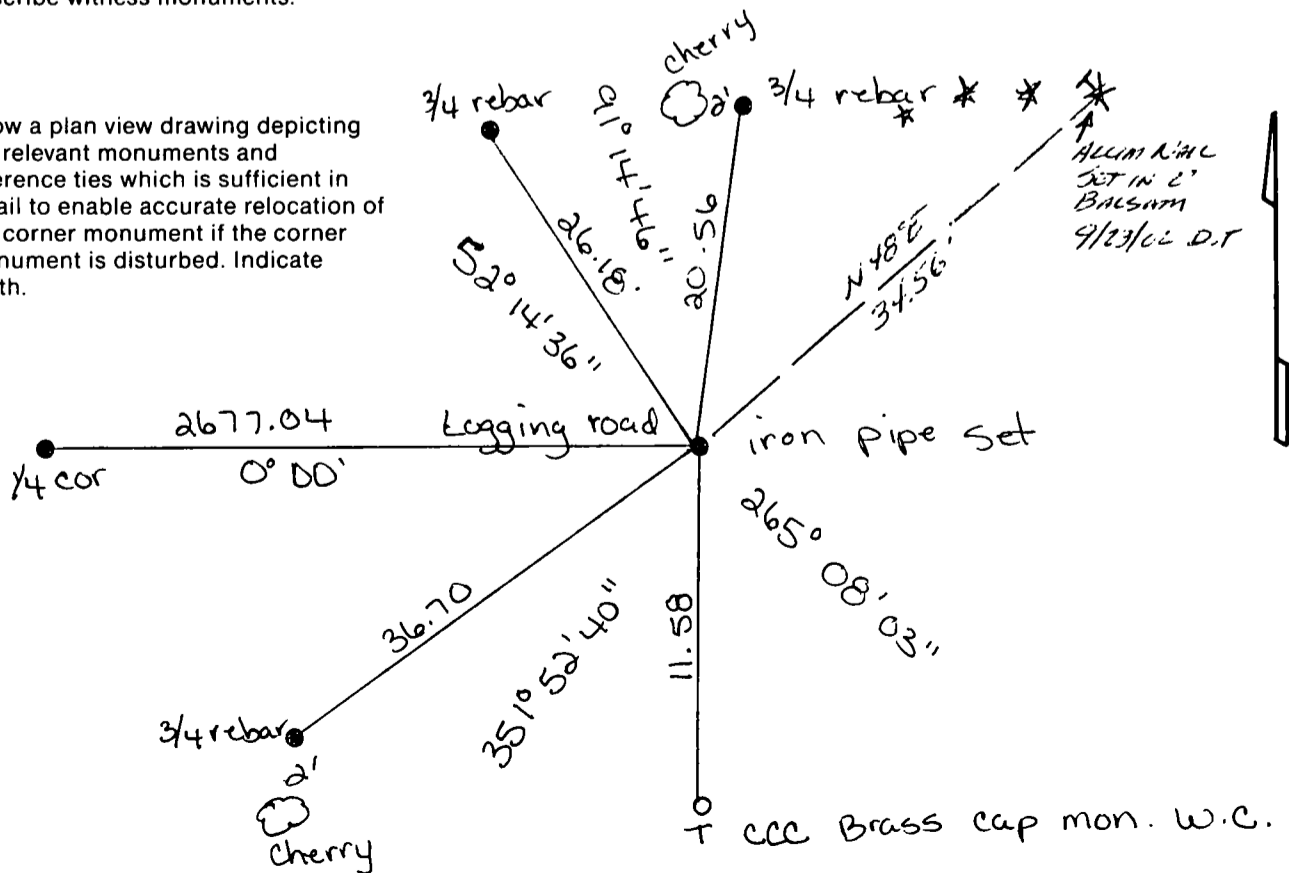
- (b) Describe any record evidence, monument evidence, occupational evidence, testimonial evidence or any other material evidence you considered, and whether the monument was found or placed

Found 4" steel pipe with brass cap witness corner along south side of logging road. Nothing was found in the road.

Brass cap is stamped "11.2' N. to cor.". I set an iron pipe for the section corner at 11.2' north of the witness corner. I then removed, re-dug, straightened and reset the witness monument, and measured to it as shown in the sketch below.

- (c) In the plan view drawing below, provide reference ties to at least 4 witness monuments, or, if the location is within a municipality, to at least 2 witness monuments. (Witness monuments shall be made of concrete, natural stone, iron or other equally durable material.) Describe witness monuments.

- (d) Show a plan view drawing depicting the relevant monuments and reference ties which is sufficient in detail to enable accurate relocation of the corner monument if the corner monument is disturbed. Indicate north.



61

Describe any material discrepancy between the location of the corner as restored or reestablished and the location of that corner as previously restored or reestablished by distance and direction. Show the discrepancy on the plan view drawing under (d), above. Show the distances between the corner as previously restored or reestablished and (1) the corner as restored or reestablished, and (2) to at least 2 of the witness monuments shown on the drawing in (d), above.

N/A

(f) Was the corner restored through acceptance of (1) an obliterated evidence location, or, (2) a found perpetuated location.?

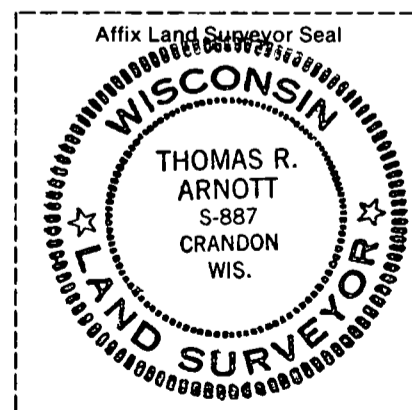
2

(g & h) Was the corner reestablished through lost corner proportionate methods? If so, show the method, including the directions and distances to other public land survey corners used as evidence or used for proportioning in determining the corner location.

No

(i) I, Thomas R. Arnott S-887
(type or print name)

certify that the corner location shown on this record was determined by me or under my direction and control and that this U.S. Public Land Survey Monument Record is correct and complete to the best of my knowledge and belief.



Thomas R. Arnott
Signature

15 Dec 94
Date

CERTIFIED LAND CORNER RESTORATION

Index No. V-9
37-7

State of Wisconsin }
County of Lan glade } ss.

Raymond J. Hallisy
I, _____, do hereby
certify that on the 30th day
of October, 19____, I found
evidence of the Section
corner of 28, 29, 32, & 33
Township 34, North, Range
9E, Fourth Principal Meridian,
as described hereon; and that from this evidence
I established a new monument and accessories
as described hereon to perpetuate the original
location of this corner.

Resident witnesses:

.....

.....

.....

History of original corner establishment:

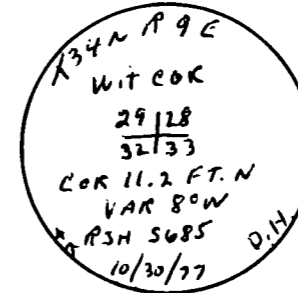
Corner set in the 1930 resurvey.

Description of corner evidence found:

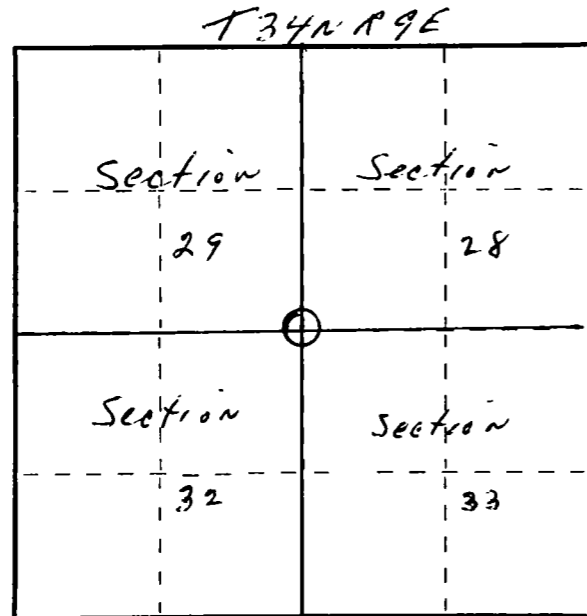
4" iron pipe with brass cap just south of pasture road.

Description of monument and accessories I established to perpetuate the original location of this corner.

No trees are nearby for BT's
I put a rock mound around corner



FORM 985 M C MILLER CO. MILWAUKEE



Dated at Antigo, Wis., this 30th day of October, 1977.

Signature Raymond J. Hallisy Title Land surveyor Registration No. 5685
(County Surveyor, Registered Land Surveyor, or other duly authorized official)

Office of Register of Deeds, County of _____, I hereby certify that the within
instrument was filed in this office for record on the _____ day of _____, 19____
at _____ o'clock _____ M.

.....
(Register of Deeds)

By _____ Deputy