

CERTIFIED LAND CORNER RESTORATION

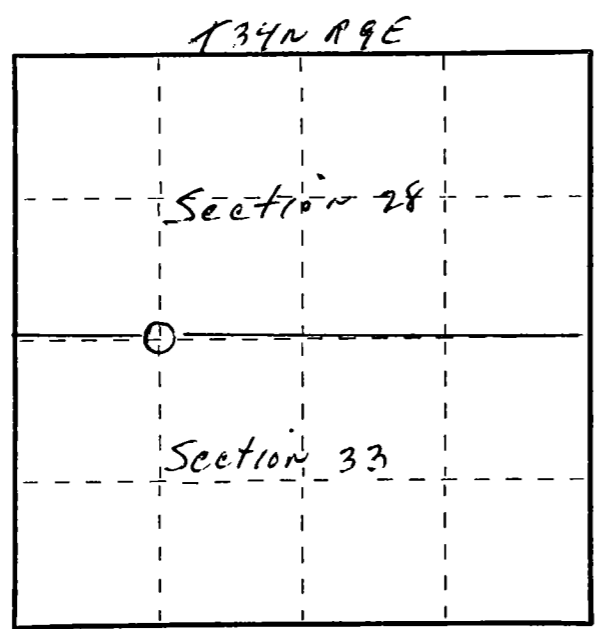
Index No. Y-10
34-9

State of Wisconsin }
County of Lac du Flambeau } ss.

I, Raymond J. Hallisy, do hereby certify that on the 15th day of October, 1977, I found evidence of the W 1/16 corner of 28 & 33 Township 34, North, Range 9E, Fourth Principal Meridian, as described hereon; and that from this evidence I established a new monument and accessories as described hereon to perpetuate the original location of this corner.

Resident witnesses:

.....
.....
.....



○ = Corner monument restored.

History of original corner establishment:

Corner set in the 1930 re-survey.

Description of corner evidence found:

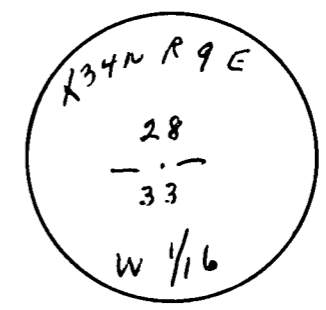
Old wood stake down.
Old BT - 1 1/2" Elm N77E 8.3 Links (dead)

Description of monument and accessories I established to perpetuate the original location of this corner.

New BT's

8" Hard Maple N51 E 5.8 Ft.
5" Hard Maple N61 W 25.9 Ft.

1 1/2" iron pipe with brass cap, Rock mound.



Dated at Lac du Flambeau, Wis., this 15th day of October, 1977

Signature Raymond J. Hallisy Title Land surveyor Registration No. 5685
(County Surveyor, Registered Land Surveyor, or other duly authorized official)

Office of Register of Deeds, County of Lac du Flambeau, I hereby certify that the within instrument was filed in this office for record on the day of, 19..... at o'clock M.

.....
(Register of Deeds)

By..... Deputy

FORM 985 H. C. MILLER CO., MILWAUKEE