

CERTIFIED LAND CORNER RESTORATION

Index No. V-11
34-9

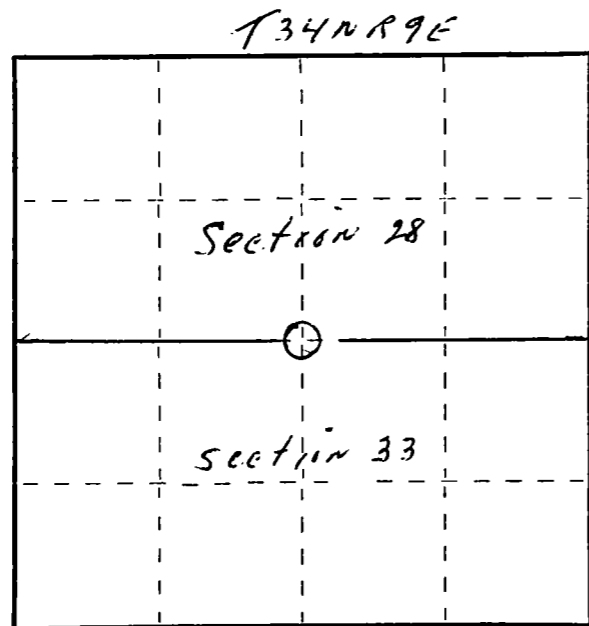
State of Wisconsin }
County of Lafayette } ss.

I Raymond J. Hallisy, do hereby
certify that on the 15th day
of October, 1977, I found
evidence of the 1/4
corner of 28 & 33
Township 34, North, Range
9F, Fourth Principal Meridian,
as described hereon; and that from this evidence
I established a new monument and accessories
as described hereon to perpetuate the original
location of this corner.

Resident witnesses:

.....
.....
.....

FORM 985 H. C. MILLER CO., MILWAUKEE



○ = Corner monument restored.

History of original corner establishment:

Corner set in the 1930 re-survey.

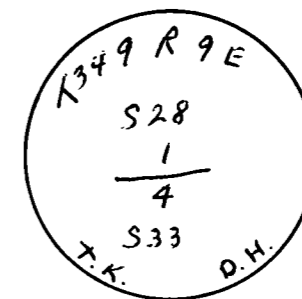
Description of corner evidence found:

4" iron pipe with brass cap.
Old PT - 12" Cedar S60W 17 Links

Description of monument and accessories I established to perpetuate the original location of this corner.

New PT's

8" Cedar S66W 11.9 Ft.
10" Hemlock N86W 19.9 Ft.
9" Black Ash N87E 22.2 Ft.



Dated at Antigo, Wis., this 15th day of October, 1977.

Signature Raymond J. Hallisy Title Land Surveyor Registration No. S685
(County Surveyor, Registered Land Surveyor, or other duly authorized official)

Office of Register of Deeds, County of _____, I hereby certify that the within
instrument was filed in this office for record on the _____ day of _____, 19____
at _____ o'clock _____ M.

.....
(Register of Deeds)

By _____ Deputy