

CERTIFIED LAND CORNER RESTORATION

Index No. V-13
34-9

State of Wisconsin }
County of Lan glade } ss.

I Raymond J. Hallsy, do hereby certify that on the 30th day of October, 19 77, I found evidence of the Section corner of 27, 28, 33, & 34 Township 34, North, Range 9E, Fourth Principal Meridian, as described hereon; and that from this evidence I established a new monument and accessories as described hereon to perpetuate the original location of this corner.

Resident witnesses:

.....
.....
.....

History of original corner establishment:

Corner set in the 1930 resurvey.

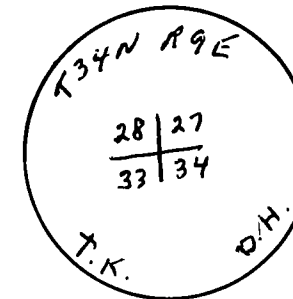
Description of corner evidence found:

4" iron pipe with brass cap.
Old BT - 12" pine N 62E 78 Links (dead)

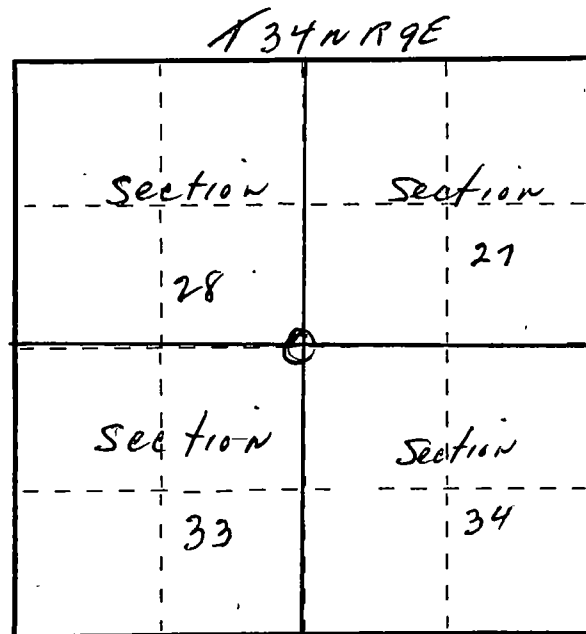
Description of monument and accessories I established to perpetuate the original location of this corner.

New BT's

6" Spruce N42E 8' 6"
6" Red Maple Clump N59W 18' 8"
4" Red Maple S4W 11' 8"



FORM 985 H. C. MILLER CO., MILWAUKEE



○ = Corner monument restored.

Dated at Antigo, Wis., this 30th day of October, 19 77.

Signature Raymond J. Hallsy Title Land Surveyor Registration No. S685
(County Surveyor, Registered Land Surveyor, or other duly authorized official)

Office of Register of Deeds, County of Antigo, I hereby certify that the within instrument was filed in this office for record on the day of, 19 at o'clock M.

.....
(Register of Deeds)

By Deputy