

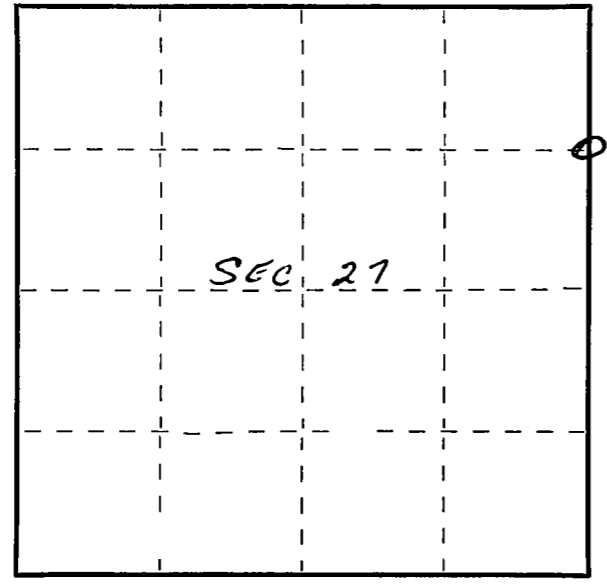
CERTIFIED LAND CORNER RESTORATION

Index No. S-17

State of Wisconsin }
County of Langlade } ss.

I Raymond J. Hallisy, do hereby certify that on the 13th day of July, 19 68, I found evidence of the N 1/16 corner of Section 27 Township 34, North, Range 9, Fourth Principal Meridian, as described hereon; and that from this evidence I established a new monument and accessories as described hereon to perpetuate the original location of this corner.

Resident witnesses:
.....
.....
.....



○ = Corner monument restored.

History of original corner establishment:

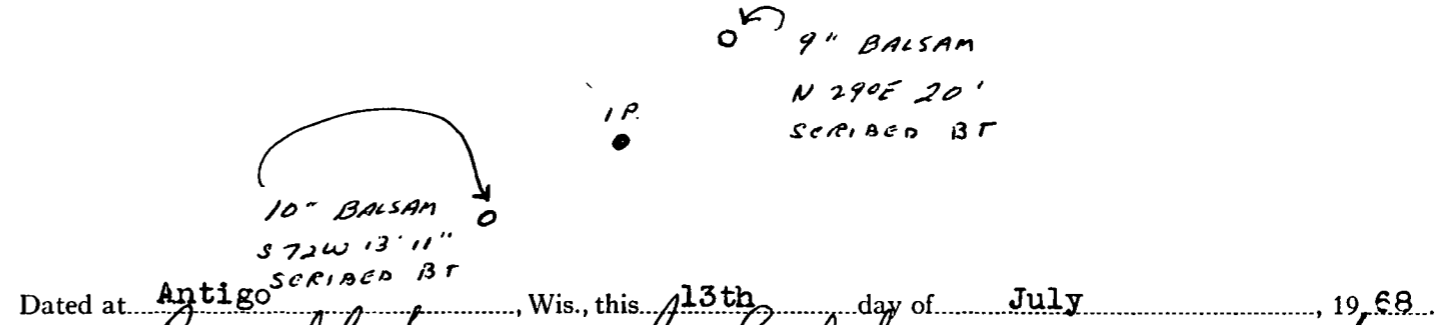
Corner set in the 1930's by: T. H. Kilroe
D. A. Hintz

Description of corner evidence found:

Found old stake marked 1/8 S

Description of monument and accessories I established to perpetuate the original location of this corner.

Set Std. 1 1/2" pipe with cap marked 27 26 N 1/16 rock mound



Dated at Antigo, Wis., this 13th day of July, 19 68.

Signature Raymond J. Hallisy Title Reg. Land Surveyor Registration No. A-685
(County Surveyor, Registered Land Surveyor, or other duly authorized official)

Office of Register of Deeds, County of _____, I hereby certify that the within instrument was filed in this office for record on the _____ day of _____, 19 _____ at _____ o'clock _____ M.

.....
(Register of Deeds)

By _____ Deputy

FORM 985 H. C. MILLER CO., MILWAUKEE