

CERTIFIED LAND CORNER RESTORATION

State of Wisconsin }  
County of Langlade } ss.

History of original corner establishment:

Corner set in the 1930's by: T. H. Kilroe  
D. A. Hintz

I Raymond J. Hallisy, do hereby certify that on the 13th day of July, 1968, I found evidence of the S 1/16 corner of Section 27 Township 34, North, Range 9, Fourth Principal Meridian, as described hereon; and that from this evidence I established a new monument and accessories as described hereon to perpetuate the original location of this corner.

Description of corner evidence found:

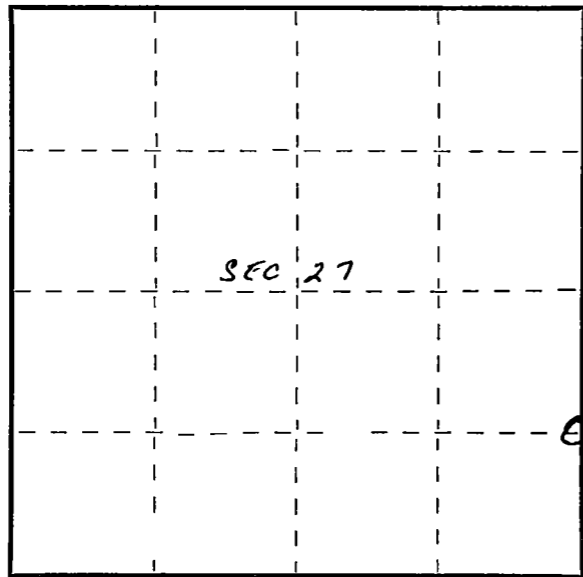
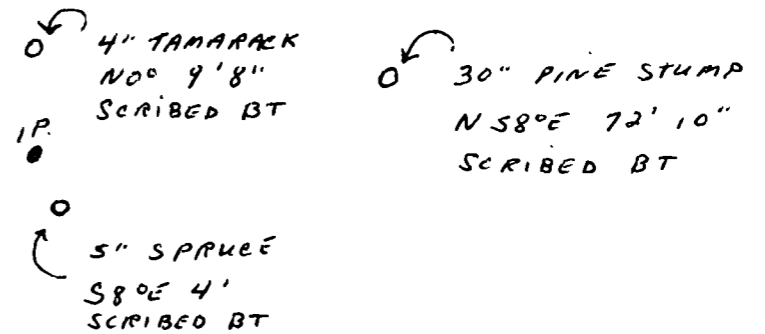
Found old stake in swamp, marking gone, point in good condition  
Old tamarack stub B.T. 10" N68W 15' 10"

Resident witnesses:

.....  
.....  
.....

Description of monument and accessories I established to perpetuate the original location of this corner.

Set Std. 1 1/2" pipe with cap marked 27 26 S 1/16



○ = Corner monument restored.

Dated at Antigo, Wis., this 13th day of July, 1968.

Signature Raymond J. Hallisy Title Reg. Land Surveyor Registration No. 1-685  
(County Surveyor, Registered Land Surveyor, or other duly authorized official)

Office of Register of Deeds, County of \_\_\_\_\_, I hereby certify that the within instrument was filed in this office for record on the \_\_\_\_\_ day of \_\_\_\_\_, 19\_\_\_\_ at \_\_\_\_\_ o'clock \_\_\_\_\_ M.

.....  
(Register of Deeds)

By..... Deputy