

CERTIFIED LAND CORNER RESTORATION

34-9  
Index No. V-16

State of Wisconsin }  
County of Lan glade } ss.

History of original corner establishment:

**Corner set in the 1930 resurvey**

I Raymond J. Hallisy, do hereby certify that on the 14th day of June, 19 69, I found evidence of the E 1/16 corner of Section 27 Township 34, North, Range 9E, Fourth Principal Meridian, as described hereon; and that from this evidence I established a new monument and accessories as described hereon to perpetuate the original location of this corner.

Description of corner evidence found:

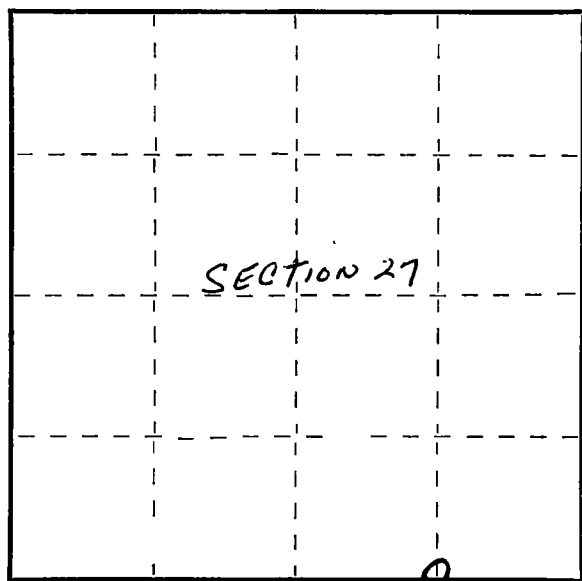
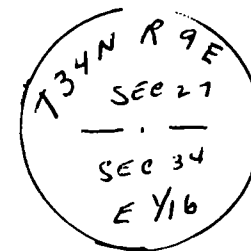
**Found squared post in place, marked 1/8 S**

Resident witnesses:

.....  
.....  
.....

Description of monument and accessories I established to perpetuate the original location of this corner.

**Reset 2" pipe with brass cap  
B.T.'s to corner  
Cedar 6" S18E 10Ft. 3 inches  
Cedar 5" N16E 14Ft. 9 inches  
B.T.'s faced at base and scribed BT**



○ = Corner monument restored.

Dated at Antigo, Wis., this 14th day of June, 19 69

Signature Raymond J. Hallisy Title Reg. Land Surveyor Registration No. S-685  
(County Surveyor, Registered Land Surveyor, or other duly authorized official)

Office of Register of Deeds, County of \_\_\_\_\_, I hereby certify that the within instrument was filed in this office for record on the \_\_\_\_\_ day of \_\_\_\_\_, 19 \_\_\_\_\_ at \_\_\_\_\_ o'clock \_\_\_\_\_ M.

.....  
(Register of Deeds)

By \_\_\_\_\_ Deputy

FORM 985 H. C. MILLER CO., MILWAUKEE