

4340926 2000

U.S. PUBLIC LAND SURVEY MONUMENT RECORD

(Prepared and as required by S. A-E 7.08 WI Administrative Code)

The WEST 1/4 corner of Section 25, T. 34 N., R. 09 E., Langlade County, WI
Corner was (check all that apply)

- Restored through acceptance of an obliterated evidence location.
- Restored through acceptance of a found perpetuated location.
- Determined to be lost and re-established through proportionate methods.
(show bearings and distances to PLSS corners used for proportioning.)
- Restored/recovered/re-established in a location that differs from a previously established position. (Show difference in plan view below.)
- Check here if additional information is shown on the reverse side of this form.

Describe record evidence, recovered physical evidence, occupational evidence, testimonial evidence, and all other evidence considered in the recovery/restoration of the corner.

September 15, 1864 - Government Surveyor, J.L. Nowlin set original corner post and marked bearing trees, Tamarac 12", S 75° E, 6 links, and Tamarac 6", N 74.5° W, 10 links.

December 4, 1906 - County Surveyor Brooks surveyed in Section 25. Brooks found 1/4 post and noted "Original Tamarac 12" S75°E is stub. Other gone." (FB 94 page 22)

December 18, 1907 - County Surveyor Brooks surveyed the lines common to Sections 25 & 26, working North and South from the 1/4 corner. (FB 94 page 38)

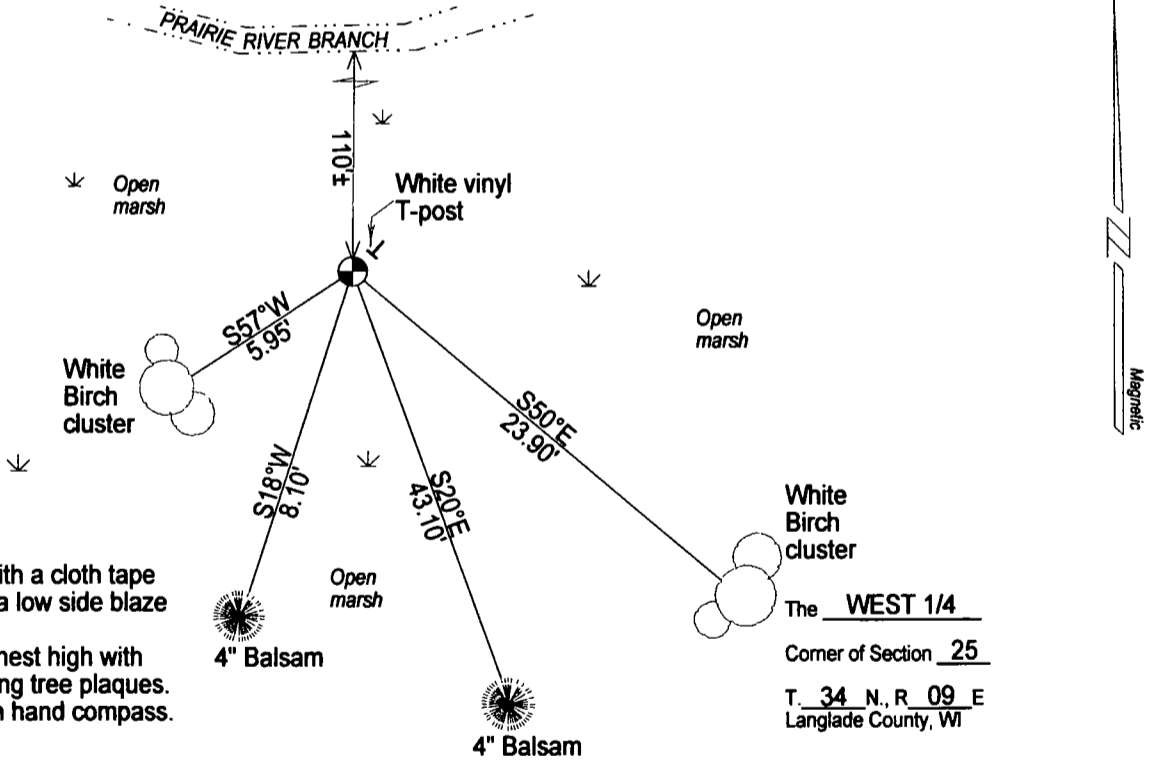
1930's Resurvey - Langlade County does not have the field notes of this resurvey, but does have the plat. The 1937 plat indicates that Surveyors T. Kilroe and D. Hintz found the corner 38.89 chains North of the SW corner and 39.25 chains South of the NW corner. The plat does not indicate what was set to mark the corner or what bearing objects were established.

2011 - Based on search coordinates provided by County Surveyor D. Trusty and visual location provided by DNR Forester P. Solin, I found a 4" brass-capped iron pipe in good condition. I found no evidence of any old bearing trees. Distances to the NW corner match the 1937 Resurvey plat within 2', to the SW corner match the 1937 Resurvey plat within 20'. The brass-capped pipe is typical of resurvey work in the 1930's. I accepted the found monument as the best evidence of the original corner location.

Physical description of the monument set:

2011 - I left the 4" brass capped iron pipe in good condition, and tied it out as follows.

Describe the accessories used to perpetuate the location of the corner. Include a plan view drawing and indicate accessories found/set. Describe measuring point on bearing trees. Show any topographic features that would aid in future recovery of the corner.

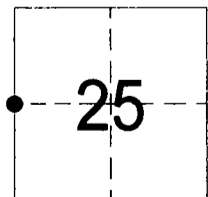
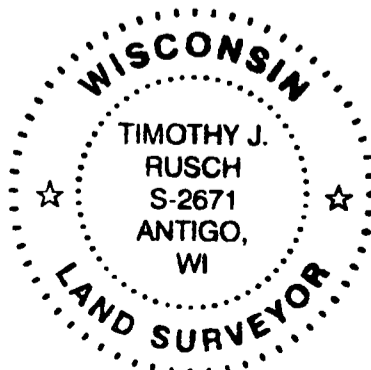


Notes:
 -Not drawn to any scale
 -Distances measured with a cloth tape to an aluminum nail in a low side blaze in bearing tree.
 -Bearing trees blazed chest high with Langlade County bearing tree plaques.
 -Bearings magnetic with hand compass.

The WEST 1/4
 Corner of Section 25
 T. 34 N., R. 09 E.
 Langlade County, WI

Revised 05/15/2011

SURVEYORS SEAL



I, Timothy J. Rusch certify that the corner location shown on this record was determined by me or under my direction and control and that this U.S. Public Land Survey Monument Record is correct and complete to the best of my knowledge and belief

Timothy J. Rusch 05-15-2011
 Signature Date

INDEX No.

T21 34-09