

LANGLADE COUNTY U.S. PUBLIC LAND CORNER RESTORATION

The South Quarter corner of Section 26, T. 34 N., R. 9 E., Langlade County, WI.

Corner was: (check all that apply)

4340926 0020

- Restored through acceptance of an obliterated evidence location.
- Restored through acceptance of a found perpetuated location.
- Determined to be lost and re-established through proportionate methods.
(Show bearings and distances to PLSS corners used for proportioning, and show original distances).
- Restored/recovered/re-established in a location that differs from a previously established position.
(Show difference in plan view below).
- Check here if addition information is shown on the reverse side of this form.

Describe record evidence, recovered physical evidence, occupational evidence, testimonial evidence and all other evidence considered in the recovery/restoration of the corner.

The original corner was established in 1864 by James L. Nowlin. Original bearing trees: hemlock, 12", South, 15 links and a cedar, 12", N32°E, 10 links. In the 1930's re-survey of this township, Hintz said "to orig. 1/4 cor. Orig. cedar, 12", N35°E, 10 links, down but good". On 10/24/07 Dave Tlusty found the 1930's monument almost completely frost heaved, leaning hard to the South. I removed the monument and redug it so the top is now 10" above ground. The orig BT cedar is still as Hintz described it: "down but good". I accept the monument as evidence of the original corner perpetuation and marked new BT's as described below.

Physical description of the monument set:

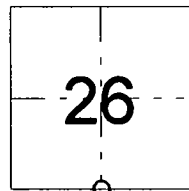
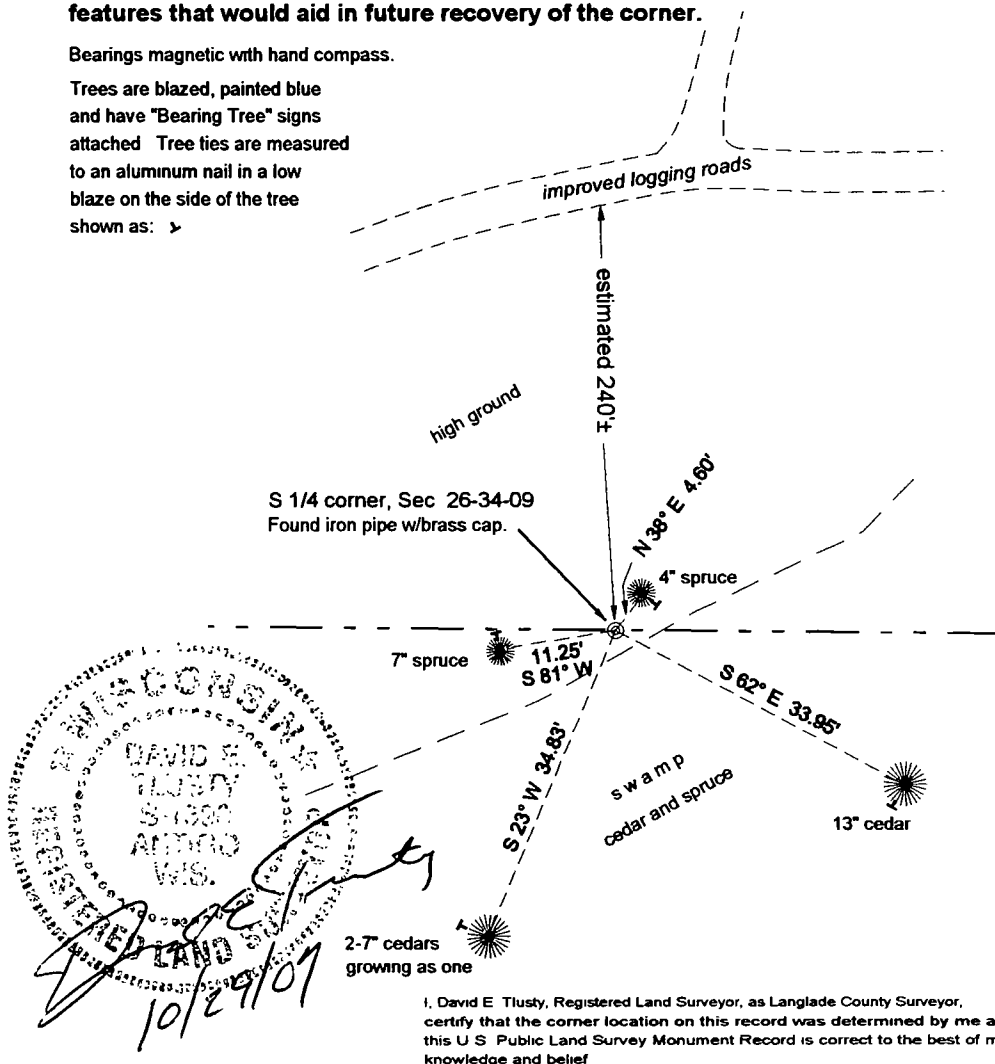
The 1930's monument, a 4" dia x 36" concrete filled pipe with brass cap is in good condition.
Set a white vinyl sign post 0.5' NE of corner monument.

Describe the accessories used to perpetuate the corner. Include a plan view drawing and accessories found/set. Describe measuring point on bearing trees. Show any topographic features that would aid in future recovery of the corner.

Bearings magnetic with hand compass.

Trees are blazed, painted blue and have "Bearing Tree" signs attached. Tree ties are measured to an aluminum nail in a low blaze on the side of the tree shown as: >

Field book 17-07



○ = corner perpetuated

The South Quarter corner of Section 26, T. 34 N., R. 9 E., Langlade County, WI

I, David E Tlusty, Registered Land Surveyor, as Langlade County Surveyor, certify that the corner location on this record was determined by me and that this U S Public Land Survey Monument Record is correct to the best of my knowledge and belief

Index No.

V-19

34-09