

CERTIFIED LAND CORNER RESTORATION

34-9  
Index No. V-20

State of Wisconsin }  
County of Langlade } ss.

History of original corner establishment:

Corner set in the 1930 resurvey

I Raymond J. Hallisey hereby certify that on the 5th day of October, 1969, I found evidence of the N. E. 1/16 corner of Section 35 Township T34, North, Range XE 9E, Fourth, Principal Meridian, as described hereon; and that from this evidence I established a new monument and accessories as described hereon to perpetuate the original location of this corner.

Description of corner evidence found:

Found old stake charred and standing, point in good shape.

Resident witnesses:

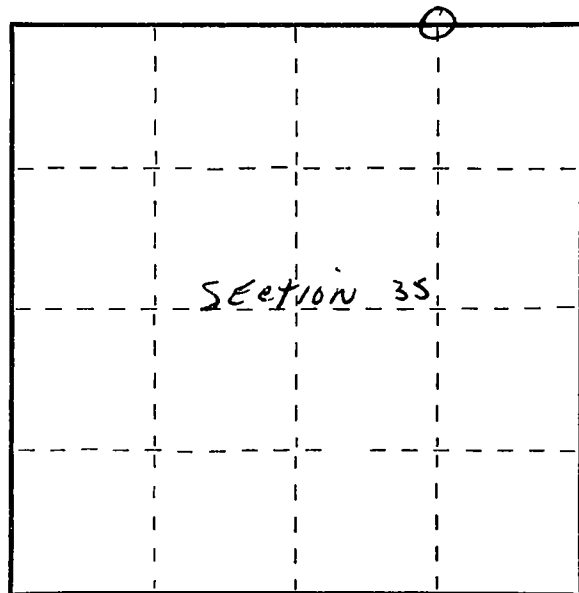
.....  
.....  
.....

Description of monument and accessories I established to perpetuate the original location of this corner.

Set 2" pipe with brass cap  
B.T.'s to corner  
Tamarack 7" S22W 12 Ft 1 inch  
Tamarack 8" S58E 8 Ft 5 inches  
B.T.'s faced at base of tree and scribed BT



FORM 985 R. C. MILLER CO., MILWAUKEE



○ = Corner monument restored.

Dated at Antigo, Wis., this 5th day of October, 1969

Signature Raymond J. Hallisey Title Reg. Land Surveyor Registration No. S-685  
(County Surveyor, Registered Land Surveyor, or other duly authorized official)

Office of Register of Deeds, County of....., I hereby certify that the within instrument was filed in this office for record on the.....day of....., 19..... at.....o'clock..... M.

.....  
(Register of Deeds)

By.....Deputy