

LANGLADE COUNTY U.S. PUBLIC LAND CORNER RESTORATION

The East Quarter corner of Section 24, T. 34 N., R. 9 E., Langlade County, WI.

Corner was: (check all that apply)

4340924 2000

- Restored through acceptance of an obliterated evidence location.
- Restored through acceptance of a found perpetuated location.
- Determined to be lost and re-established through proportionate methods.
 - Show bearings and distances to PLSS corners used for proportioning, and show original distances).
- Restored/recovered/re-established in a location that differs from a previously established position.
 - (Show difference in plan view below).
- Check here if additional information is shown on the reverse side of this form.

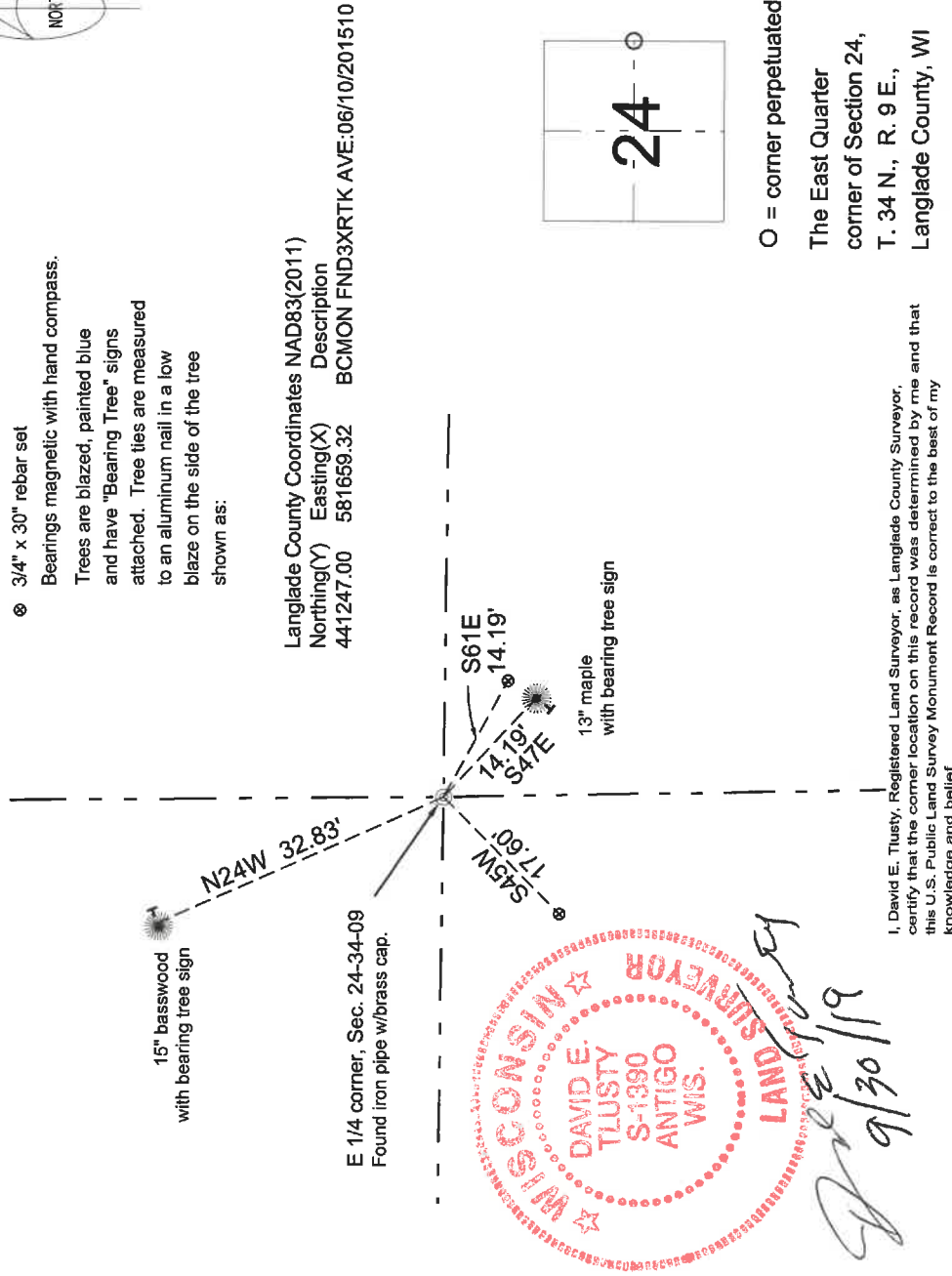
Describe record evidence, recovered physical evidence, occupational evidence, testimonial evidence and all other evidence considered in the recovery/restoration of the corner.

The original corner was established in 1959 by Hiram Fellows. Original bearing trees: Aspen, 20", N60E, 10 links and elm, 15", S85W, 9 links. In the 1936 resurvey of this township, Kilroe & Hintz noted: "to orig. 1/4 cor. Orig. elm, N87W, 9.7 lks. Rest. Birch, 8", S31E, 13.6 lks. New birch, 16", N30 1/2E, 51 lks and a new birch, 12", S14W, 25.4 links. In 1979, Ray Hallisy found 4" iron pipe with brass cap and Old BT, Yellow birch, 16", N 30 1/2E, 51 links. He said logging road, 3 lks. North, runs East and West. June 10, 2015, D. Tlusty found 1930's monument at south edge of recently improved logging road. Monument was found leaning slightly to the south so I redug it upright and mounded with stones. I accept this location as the best evidence of a perpetuated location of the original corner. I found existing BT's and made new BT's as shown below.

Physical description of the monument set:

Existing monument as describd above.
Set a 6' green channel post, S25E. 1.3' from the monument.

Describe the accessories used to perpetuate the corner. Include a plan view drawing and accessories found/set. Describe measuring point on bearing trees. Show any topographic features that would aid in future recovery of the corner.



I, David E. Tlusty, Registered Land Surveyor, as Langlade County Surveyor, certify that the corner location on this record was determined by me and that this U.S. Public Land Survey Monument Record is correct to the best of my knowledge and belief.