

CERTIFIED LAND CORNER RESTORATION

Index No. P-25
34-10
34-09

State of Wisconsin }
County of Lanai } ss.

I, Raymond J. Hallisy, do hereby certify that on the 28th day of July, 1979, I found evidence of the 1/4 corner of Section 19 & 24 Township 34, North, Range 10E, Fourth Principal Meridian, as described hereon; and that from this evidence I established a new monument and accessories as described hereon to perpetuate the original location of this corner.

Resident witnesses:

.....
.....
.....

History of original corner establishment:

Corner set in the 1930 resurvey.

1930 BT BIRCH 16 N 30¹/₂ E 51 LKS

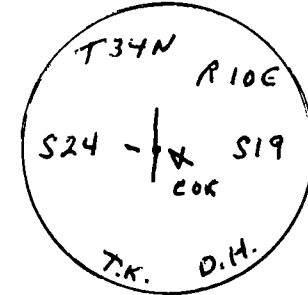
Description of corner evidence found:

4" pipe with brass cap.
Old BT
16" Yellow Birch No. 30¹/₂ ~~LINKS~~ East 51 Links
Logging road 3 LKS North, runs East & West.

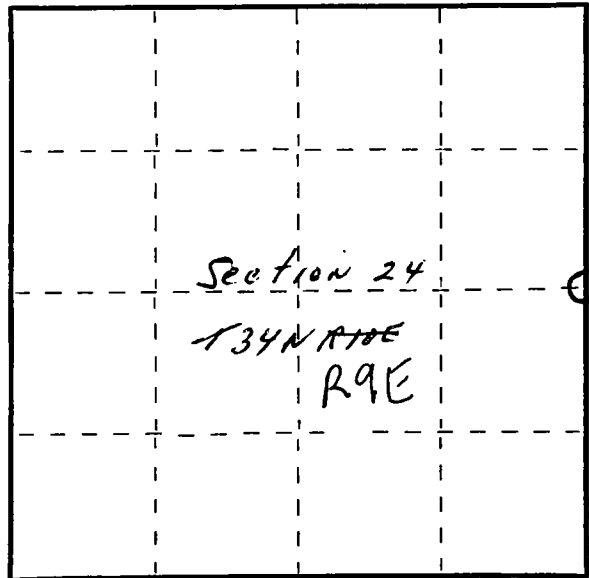
Description of monument and accessories I established to perpetuate the original location of this corner.

New BT's

9"	Hard Maple	RXXXXX	N59E	26' 10"
10"	Hard Maple		S53E	14'
8"	Hard Maple		N83W	25' 7"
14"	Basswood		N26W	32' 6"



FORM 985 H. C. MILLER CO., MILWAUKEE



○ = Corner monument restored.

Dated at Antigo, Wis., this 28th day of July, 1979.

Signature Raymond J. Hallisy Title Reg. Surveyor Registration No. S685
(County Surveyor, Registered Land Surveyor, or other duly authorized official)

Office of Register of Deeds, County of _____, I hereby certify that the within instrument was filed in this office for record on the _____ day of _____, 19____ at _____ o'clock _____ M.

.....
(Register of Deeds)

By.....Deputy