

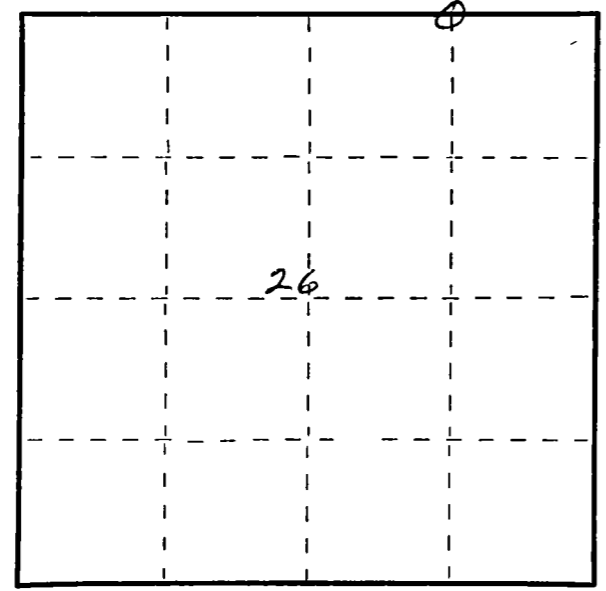
CERTIFIED LAND CORNER RESTORATION

Index No. A-20

State of Wisconsin }  
County of KAMLADE } ss.

I, Raymond J. Halliday, do hereby certify that on the 6<sup>th</sup> day of Sept, 1987, I found evidence of the S 1/16 corner of Section 26 Township 34, North, Range 9E, Fourth Principal Meridian, as described hereon; and that from this evidence I established a new monument and accessories as described hereon to perpetuate the original location of this corner.

Resident witnesses:  
.....  
.....  
.....



○ = Corner monument restored.

History of original corner establishment:

1830 Reservation

Description of corner evidence found:

1 1/2" IRON PIPE MARKED



Witness trees  
10" BALSAM N20°W 20'6" (DEAD)  
10" TAMARACK S40°W 19' (DEAD)

Description of monument and accessories I established to perpetuate the original location of this corner.

New BT's  
10" Red Maple N76°E 19.6'  
8" Red Maple S82°E 10.6'

Dated at Antigo, Wis., this 6<sup>th</sup> day of Sept, 1987.

Signature Raymond J. Halliday Title Surveyor Registration No. 5-685  
(County Surveyor, Registered Land Surveyor, or other duly authorized official)

Office of Register of Deeds, County of ....., I hereby certify that the within instrument was filed in this office for record on the ..... day of ....., 19..... at ..... o'clock ..... M.

.....  
(Register of Deeds)

By ..... Deputy

FORM 985 K. C. MILLER CO., MILWAUKEE

CERTIFIED LAND CORNER RESTORATION

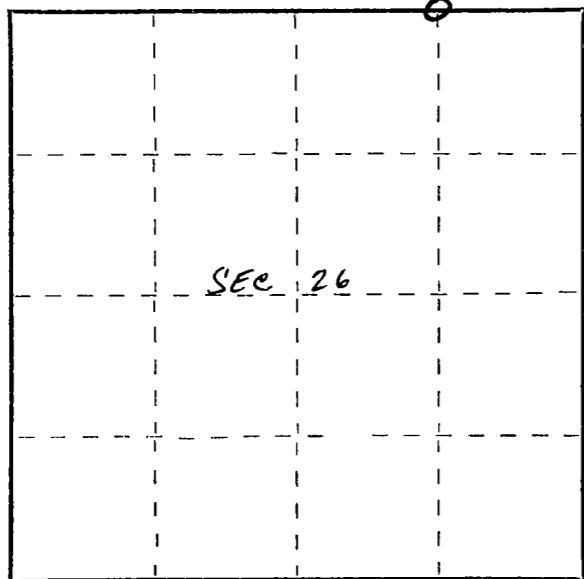
34-9  
Index No. R-20

State of Wisconsin }  
County of Lanlade } ss.

I, Raymond J. Hallisy, do hereby certify that on the 25th day of May, 1968, I found evidence of the E 1/16 corner of Section 26 Township 34, North, Range 9, Fourth, Principal Meridian, as described hereon; and that from this evidence I established a new monument and accessories as described hereon to perpetuate the original location of this corner.

Resident witnesses:

.....  
.....  
.....



○ = Corner monument restored.

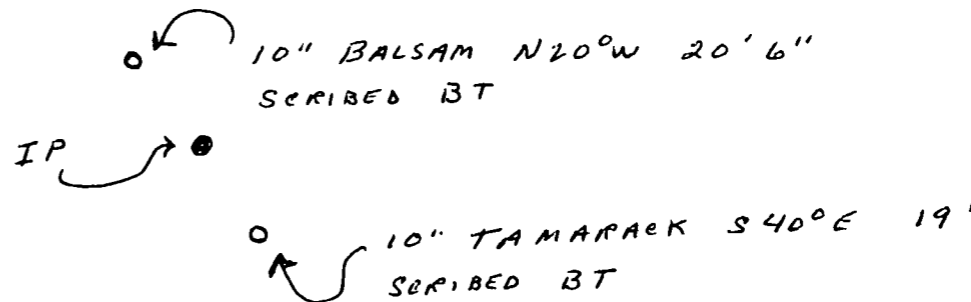
History of original corner establishment:

Corner set in the 1930's by: T. H. Kilroe  
D. A. Hintz

Description of corner evidence found:

**Found squared stake - some decay**  
**Stake marked E 1/8 S26 S23**

Description of monument and accessories I established to perpetuate the original location of this corner.  
**Set Std. 1 1/2" pipe with cap marked E 1/16**



Dated at Antigo, Wis., this 25th day of May, 1968

Signature Raymond J. Hallisy Title Reg. Land Surveyor Registration No. S-685  
(County Surveyor, Registered Land Surveyor, or other duly authorized official)

Office of Register of Deeds, County of \_\_\_\_\_, I hereby certify that the within instrument was filed in this office for record on the \_\_\_\_\_ day of \_\_\_\_\_, 19\_\_\_\_ at \_\_\_\_\_ o'clock \_\_\_\_\_ M.

.....  
(Register of Deeds)

By..... Deputy

FORM 985 H. C. MILLER CO. - MILWAUKEE