

CERTIFIED LAND CORNER RESTORATION

Index No. P-14

State of Wisconsin }  
County of Waukegan } ss.

I Raymond J. Halling, do hereby certify that on the 5<sup>th</sup> day of Sept, 1987, I found evidence of the W 1/4 corner of Section 27 Township 34, North, Range 9E, Fourth Principal Meridian, as described hereon; and that from this evidence I established a new monument and accessories as described hereon to perpetuate the original location of this corner.

Resident witnesses:

.....  
.....  
.....

History of original corner establishment:

1930 Resurvey

Description of corner evidence found:

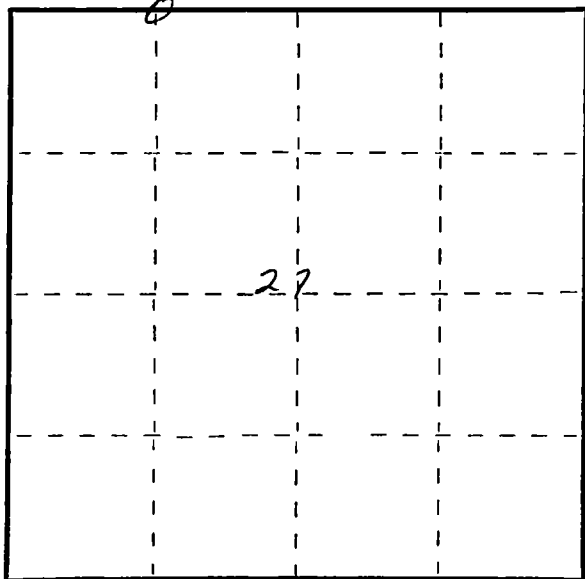
CORNER AND ALL EVIDENCE DESTROYED BY DNR GAME MGT. IN CONSTRUCTION OF A WILDLIFE OPENING

Description of monument and accessories I established to perpetuate the original location of this corner.

NONE

FORM 985 M. C. MILLER CO., MILWAUKEE

T34N R9E



○ = Corner monument restored.

Dated at Ant 100, Wis., this 5<sup>th</sup> day of Sept, 1987.

Signature Raymond J. Halling Title SURVEYOR Registration No. 5-685  
(County Surveyor, Registered Land Surveyor, or other duly authorized official)

Office of Register of Deeds, County of....., I hereby certify that the within instrument was filed in this office for record on the.....day of....., 19..... at.....o'clock..... M.

.....  
(Register of Deeds)

By.....Deputy

CERTIFIED LAND CORNER RESTORATION

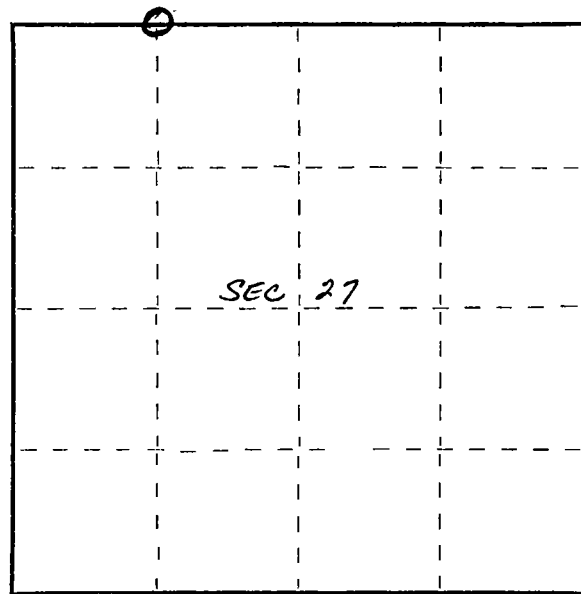
34-9  
Index No. R-14

State of Wisconsin }  
County of Langlade } ss.

I Raymond J. Hallisy, do hereby certify that on the 25th day of May, 1968, I found evidence of the W 1/16 corner of Section 27 Township 34, North, Range 9, Fourth, Principal Meridian, as described hereon; and that from this evidence I established a new monument and accessories as described hereon to perpetuate the original location of this corner.

Resident witnesses:  
.....  
.....  
.....

FORM 985 H. C. MILLER CO., MILWAUKEE



○ = Corner monument restored.

History of original corner establishment:

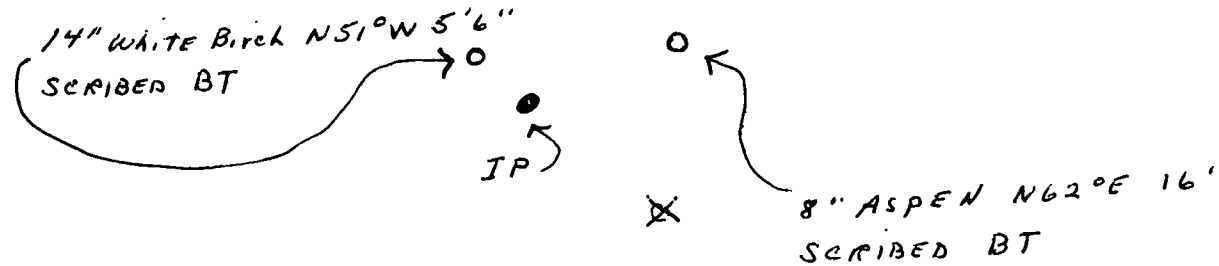
Corner set in the 1930's by; T. H. Kilroe  
D. A. Hintz

Description of corner evidence found:

**Found squared stake with rock mound**  
**Stake marked W 1/8 S22 S27**

Description of monument and accessories I established to perpetuate the original location of this corner.

**Set Std. 1 1/2 pipe with cap marked W1/16 - rock mound**



Dated at Antigo, Wis., this 25th day of May, 1968

Signature Raymond J. Hallisy Title Reg. Land Surveyor Registration No. S-685  
(County Surveyor, Registered Land Surveyor, or other duly authorized official)

Office of Register of Deeds, County of \_\_\_\_\_, I hereby certify that the within instrument was filed in this office for record on the \_\_\_\_\_ day of \_\_\_\_\_, 19\_\_\_\_ at \_\_\_\_\_ o'clock \_\_\_\_\_ M.

.....  
(Register of Deeds)

By..... Deputy